

Recombinant Human Dynamin 2 protein ab132947

1 Image

Description

Product name	Recombinant Human Dynamin 2 protein
Expression system	Wheat germ
Accession	<u>P50570</u>
Protein length	Full length protein
Animal free	No
Nature	Recombinant
Species	Human
Sequence	<div>MGNRGMEELIPLVNKLQDAFSSIGQSCHLDLPQIAVVGGQ</div> <div>SAGKSSVLEN</div> <div>FVGRDFLPRGSGIVTRRPLILQLIFSKTEHAEFLHCKSKKFT</div> <div>DFDEVQRQE</div> <div>IEAETDRVGTGNKGISPVPINLRVYSPHVLNLTIDLPGITKV</div> <div>PVGDQPP</div> <div>DIEYQIKDMILQFISRESSLILAVTPANMDLANSALKLAKE</div> <div>VDPQGLRT</div> <div>IGVITKLDLMDEGTDARDVLENKLLPLRRGYIGVVNRSQKDI</div> <div>EGKKDIRA</div> <div>ALAAERKFFLSHPAYRHMADRMGTPHLQKTLNQQLTNHIR</div> <div>ESLPALRSKL</div> <div>QSQLLSLEKEVEEYKNFRPDDPTRKTKALLQMVQQFGVD</div> <div>FEKRIEGSGDQ</div> <div>VDTLELSGGARINRIFHERFPFELVKMEFDEKDLRREISYAI</div> <div>KNIHGVRT</div> <div>GLFTPDLAFAEAVKKQVVKLKEPCLKCVDLVIQELINTVRQ</div> <div>CTSKLSSYP</div> <div>RLREETERVTTYIREREGRTKDQILLIDIEQSYINTNHEDFIG</div> <div>FANAQ</div> <div>QRSTQLNKKRAIPNQGEILVIRRGWLTINNISLMKGGKEYW</div> <div>FVLTAESL</div> <div>SWYKDEEEKEKKYMLPLDNLKIRDVEKGFMSNKHVFAIFN</div> <div>TEQRNVYKDL</div> <div>RQIELACDSQEDVDSWKASFLRAGVYPEKDQAENEDGA</div> <div>QENTFSMDPQLE</div> <div>RQVETIRNLVDSYVAIINKSIRDLMPKTIMHLMINNTKAFIHHE</div> <div>LLAYLY</div>

SSADQSSLMEESADQAQRRDDMLRMYHALKEALNIIGDIS
TSTVSTPVPP
PVDDTWLQSASSHSPTPQRRPVSSIHPPGRPPAVRGPTP
GPPLIPVPVGA
AASFSAPIPSRPGPQSVFANSDFPAPPQIPSRPVRIPP
GIPPGVPSRR PPAAPSRPTIIRPAEPSLLD

Predicted molecular weight 125 kDa including tags
Amino acids 1 to 870

Specifications

Our **Abpromise guarantee** covers the use of **ab132947** in the following tested applications.

The application notes include recommended starting dilutions; optimal dilutions/concentrations should be determined by the end user.

Applications ELISA
Western blot
SDS-PAGE

Form Liquid

Additional notes

Preparation and Storage

Stability and Storage Shipped on dry ice. Upon delivery aliquot and store at -80°C. Avoid freeze / thaw cycles.
pH: 8.00
Constituents: 0.31% Glutathione, 0.79% Tris HCl

General Info

Function Microtubule-associated force-producing protein involved in producing microtubule bundles and able to bind and hydrolyze GTP. Most probably involved in vesicular trafficking processes, in particular endocytosis.

Tissue specificity Ubiquitously expressed.

Involvement in disease Defects in DNM2 are a cause of centronuclear myopathy autosomal dominant (ADCNM) [MIM:160150]; also known as autosomal dominant myotubular myopathy. Centronuclear myopathies (CNMs) are congenital muscle disorders characterized by progressive muscular weakness and wasting involving mainly limb girdle, trunk, and neck muscles. It may also affect distal muscles. Weakness may be present during childhood or adolescence or may not become evident until the third decade of life. Ptosis is a frequent clinical feature. CNMs comprise a wide spectrum of phenotypes, ranging from severe neonatal to mild late-onset familial forms. The most prominent histopathologic features include high frequency of centrally located nuclei in muscle fibers not secondary to regeneration, radial arrangement of sarcoplasmic strands around the central nuclei, and predominance and hypotrophy of type 1 fibers.
Defects in DNM2 are the cause of Charcot-Marie-Tooth disease dominant intermediate type B (CMTDIB) [MIM:606482]. Charcot-Marie-Tooth disease (CMT) is a clinically and genetically heterogeneous disorder of the peripheral nervous system, characterized by progressive

weakness and atrophy, initially of the peroneal muscles and later of the distal muscles of the arms. CMTDIB is a form of Charcot-Marie-Tooth disease characterized by clinical and pathologic features intermediate between demyelinating and axonal peripheral neuropathies, and motor median nerve conduction velocities ranging from 25 to 45 m/sec.

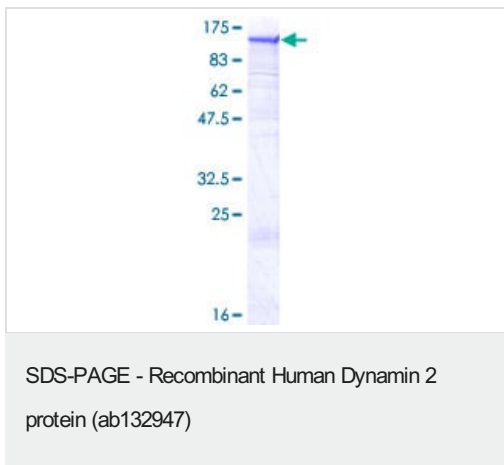
Sequence similarities

Belongs to the dynamin family.
Contains 1 GED domain.
Contains 1 PH domain.

Cellular localization

Cytoplasm. Cytoplasm > cytoskeleton. Cell junction > synapse > postsynaptic cell membrane > postsynaptic density. Cell junction > synapse. Microtubule-associated. Also found in the postsynaptic density of neuronal cells.

Images



12.5% SDS-PAGE analysis of ab132947 stained with Coomassie Blue

Please note: All products are "FOR RESEARCH USE ONLY. NOT FOR USE IN DIAGNOSTIC PROCEDURES"

Our Abpromise to you: Quality guaranteed and expert technical support

- Replacement or refund for products not performing as stated on the datasheet
- Valid for 12 months from date of delivery
- Response to your inquiry within 24 hours
- We provide support in Chinese, English, French, German, Japanese and Spanish
- Extensive multi-media technical resources to help you
- We investigate all quality concerns to ensure our products perform to the highest standards

If the product does not perform as described on this datasheet, we will offer a refund or replacement. For full details of the Abpromise, please visit <https://www.abcam.com/abpromise> or contact our technical team.

Terms and conditions

- Guarantee only valid for products bought direct from Abcam or one of our authorized distributors