

Product datasheet

Recombinant human Dyrk1B/MIRK protein (Active) ab207116

[2 Images](#)

Description

Product name	Recombinant human Dyrk1B/MIRK protein (Active)
Biological activity	The specific activity of ab207116 was determined to be 550 nmol/min/mg.
Purity	> 90 % Densitometry. Affinity purified.
Expression system	Baculovirus infected Sf9 cells
Accession	<u>Q9Y463</u>
Protein length	Full length protein
Animal free	No
Nature	Recombinant
Species	Human
Sequence	MAVPPGHGPFSGFPGQEHTQVLPDVRLPRRLPLAFRD ATSAPLRKLSV DLIKTYKHINEVYAKKKRRAQQAPPQDSSNKKEKKVLNH GYDDDNHDYI VRSGERWLERYEIDSLIGKGSFGQVVKAYDHQTQELVAIKII KNKKAFLN QAQIELRLELMNQHDTEMKYYVHLKRHFMRNHLCLVFE LLSYNL YDL LRNTHFRGVS LNLTRKLAQQQLCTALLFLATPELSIIHCCLKP ENILL CNP KRSAIKIVDFGSSCQLGQRIYQIQSRFYRSPEVLLGTPYDL AIDMWSLG CILVEMHTGEPLFSGSNEVDQMNRIVEVLGIPPAAML DQA PKARKYFERL PGGGWTLRRTKELRKDYQGGPTRRLQEV LGVQTGGPGG RRAGEPGHSPAD YLRFQDLVLRMLEYEPAAARISPLGALQHGGFFRRTADEATN TGPAGSSAST SPAPLDTCPSSSTASSISSGGSSGSSSDNRTYRYSNRYC GGPGPPITDC EMNSPQVPPSQPLRPWAGGDVPHKTHQAPASASSLPGT GAQLPPQPRYL G

RPPSPTSPPPPELMDVSLVGGPADCSPPHPAPAPQHPA
ASALRTRMTGGR
PPLPPPDDPATLGPHLGLRGVPQSTAASS

Predicted molecular weight	106 kDa including tags
Amino acids	1 to 629
Tags	GST tag N-Terminus
Additional sequence information	BC018751

Specifications

Our **Abpromise guarantee** covers the use of **ab207116** in the following tested applications.

The application notes include recommended starting dilutions; optimal dilutions/concentrations should be determined by the end user.

Applications	Functional Studies SDS-PAGE
Form	Liquid
Additional notes	This product was previously labelled as Dyrk1B

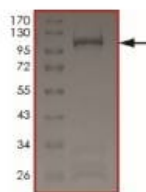
Preparation and Storage

Stability and Storage	Shipped on Dry Ice. Upon delivery aliquot. Store at -80°C. Avoid freeze / thaw cycle. pH: 7.50 Constituents: 0.79% Tris HCl, 0.87% Sodium chloride, 0.31% Glutathione, 0.003% EDTA, 0.004% DTT, 0.002% PMSF, 25% Glycerol (glycerin, glycerine) This product is an active protein and may elicit a biological response in vivo, handle with caution.
------------------------------	---

General Info

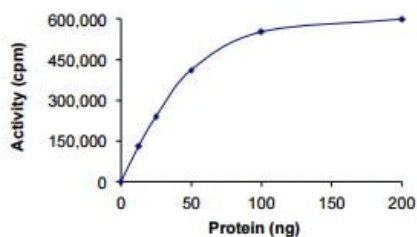
Function	Dual-specificity kinase which possesses both serine/ threonine and tyrosine kinase activities. Enhances the transcriptional activity of TCF1/HNF1A and FOXO1. Inhibits epithelial cell migration. Mediates colon carcinoma cell survival in mitogen-poor environments.
Tissue specificity	Highest expression in skeletal muscle, testis, heart and brain with little expression in colon or lung. Expressed in a variety of tumor cell lines.
Sequence similarities	Belongs to the protein kinase superfamily. CMGC Ser/Thr protein kinase family. MNB/DYRK subfamily. Contains 1 protein kinase domain.
Post-translational modifications	Autophosphorylated on tyrosine residues. Phosphorylated by MAP kinase. Tyrosine phosphorylation may be required for dimerization.
Cellular localization	Nucleus.

Images



SDS-PAGE analysis of ab207116 by densitometry, approximate MW 106 kDa.

SDS-PAGE - Recombinant human Dyrk1B/MIRK protein (Active) (ab207116)



The specific activity of ab207116 was determined to be 550 nmol/min/mg.

Functional Studies - Recombinant human Dyrk1B/MIRK protein (Active) (ab207116)

Please note: All products are "FOR RESEARCH USE ONLY. NOT FOR USE IN DIAGNOSTIC PROCEDURES"

Our Abpromise to you: Quality guaranteed and expert technical support

- Replacement or refund for products not performing as stated on the datasheet
- Valid for 12 months from date of delivery
- Response to your inquiry within 24 hours
- We provide support in Chinese, English, French, German, Japanese and Spanish
- Extensive multi-media technical resources to help you
- We investigate all quality concerns to ensure our products perform to the highest standards

If the product does not perform as described on this datasheet, we will offer a refund or replacement. For full details of the Abpromise, please visit <https://www.abcam.com/abpromise> or contact our technical team.

Terms and conditions

- Guarantee only valid for products bought direct from Abcam or one of our authorized distributors