

Product datasheet

Recombinant Human ELOVL2 protein ab162883

1 Image

Description

Product name	Recombinant Human ELOVL2 protein
Expression system	Wheat germ
Protein length	Full length protein
Animal free	No
Nature	Recombinant
Species	Human
Sequence	MEHLKAFDDEINAFLDNMFGRDSRVRGWFMLDSYLPTF FLTVMYLLSIW LGNKYMKNRPALSLRGILTLYNLGITLLSAYMLAELILSTWE GGYNLQCQ DLTSAGEADIRVAKVLWWYFYSKSVEFLDTIFFVLRKKTS QITFLHVVYHH ASMFNIWWCVLNWIPCGQSFFGPTLNSFIHILMYSYGLSV FPSMHKYLW WKKYLTQAQLVQFVLAITHTMSAVVKPCGFPPGCLIFQSS YMLTLVILFL NFYVQTYRKKPMKKDMQEPPAGKEVKNGFSKAYFTAAN GVMNKKAQ
Amino acids	1 to 296
Tags	GST tag N-Terminus

Specifications

Our **Abpromise guarantee** covers the use of **ab162883** in the following tested applications.

The application notes include recommended starting dilutions; optimal dilutions/concentrations should be determined by the end user.

Applications	Western blot
	ELISA

Form	Liquid
-------------	--------

Additional notes

Preparation and Storage

Stability and Storage

Shipped on dry ice. Upon delivery aliquot and store at -80°C. Avoid freeze / thaw cycles.

pH: 8.00

Constituents: 0.31% Glutathione, 0.79% Tris HCl

General Info

Function

Condensing enzyme that catalyzes the synthesis of polyunsaturated very long chain fatty acid (C20- and C22-PUFA). Acts specifically toward polyunsaturated acyl-CoA with the higher activity toward C20:4(n-6) acyl-CoA.

Tissue specificity

Liver and testis.

Sequence similarities

Belongs to the ELO family.

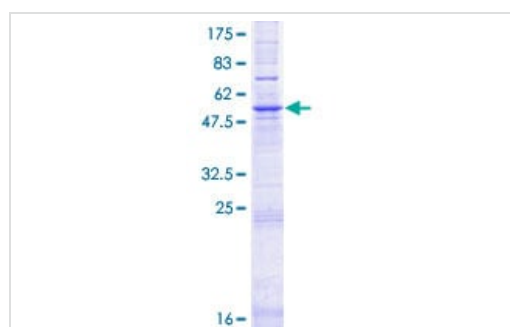
Domain

The di-lysine motif may confer endoplasmic reticulum localization.

Cellular localization

Endoplasmic reticulum membrane.

Images



ab162883 on a 12.5% SDS-PAGE stained with Coomassie Blue.

SDS-PAGE - Recombinant Human ELOVL2 protein
(ab162883)

Please note: All products are "FOR RESEARCH USE ONLY. NOT FOR USE IN DIAGNOSTIC PROCEDURES"

Our Abpromise to you: Quality guaranteed and expert technical support

- Replacement or refund for products not performing as stated on the datasheet
- Valid for 12 months from date of delivery
- Response to your inquiry within 24 hours
- We provide support in Chinese, English, French, German, Japanese and Spanish
- Extensive multi-media technical resources to help you
- We investigate all quality concerns to ensure our products perform to the highest standards

If the product does not perform as described on this datasheet, we will offer a refund or replacement. For full details of the Abpromise, please visit <https://www.abcam.com/abpromise> or contact our technical team.

Terms and conditions

- Guarantee only valid for products bought direct from Abcam or one of our authorized distributors