

Recombinant Human EMR1/ADGRE1 (F4/80) protein  
ab131740

1 Image

Description

Product name	Recombinant Human EMR1/ADGRE1 (F4/80) protein
Expression system	Wheat germ
Accession	<u>Q14246-2</u>
Protein length	Full length protein
Animal free	No
Nature	Recombinant
Species	Human
Sequence	MRGFNLLLFWGCCVMHSEWEGHIRPTRKPNTKGNNCRDS TLCPAYATCTNT VDSYYCACKQGFLSSNGQNHFKDPGVRCKDIDECSSQP QPCGPNSSCKNL SGRYKCSCLDGFSSPTGNDWVPKPGNFSCDINECLTS SVCPEHSDCVN SMGSYSCSCQVGFISRNSTCEDVDECADPRACPEHATC NNTVGNYSFCFN PGFESSSGHLSFQGLKASCEDIDECTEMCPINSTCTNTPG SYFCTCHPGF APSNQQLNFTDQGVECRDIDECRQDPSTCGPNSICTNAL GSYSCGCIAGF HPNPEGSQKDNFSCQRVLFKCKEDVIPDNKQIQQCQEG TAVKPAYVSFC AQINNIFSVLDKVCENKTTVVSLKNTTESFVPVLKQISTWT KFTKEETSS LATVFLESVESMTLASFWKPSANITPAVRTEYLDIESKVINK ECSEENV LDLVAKGDKMKIGCSTIEESESTETTGVAFVSFVGMESVL NERFFKDHQA PLTTSEIKLMNSRVVGGIMTGEKKDGFSDPIYTLENIQPK QKFERPIC VSWSTDVKGGRWTSFGCVILEASEYTYICSCNQMANLAIIIM ASGELTMGC AIIAGFLHYLFLACFFWMLVEAVILFLMVRNLKVVNYFSSRN IKMLHICA

FGYGLPMLVVVISASVQPQGYGMHNRCLNTETGFIWSFL  
GPVCTVIVIN  
SLLLTLWLILRQRLSSVNAEVSTLKDTRLITFKAFALFIL  
GCSWVLGI  
FQIGPVAGVMAYLFTIINSLQGAFILHCLLNGQVREEYKR  
WITGKTKP SSQSQTSRILLSSMPSASKTG

<b>Predicted molecular weight</b>	117 kDa including tags
<b>Amino acids</b>	1 to 821
<b>Description</b>	Recombinant Human EMR1/ADGRE1 protein

## Specifications

---

Our **Abpromise guarantee** covers the use of **ab131740** in the following tested applications.

The application notes include recommended starting dilutions; optimal dilutions/concentrations should be determined by the end user.

<b>Applications</b>	SDS-PAGE Western blot ELISA
<b>Form</b>	Liquid
<b>Additional notes</b>	

## Preparation and Storage

---

<b>Stability and Storage</b>	Shipped on dry ice. Upon delivery aliquot and store at -80°C. Avoid freeze / thaw cycles. pH: 8.00 Constituents: 0.31% Glutathione, 0.79% Tris HCl
------------------------------	--

## General Info

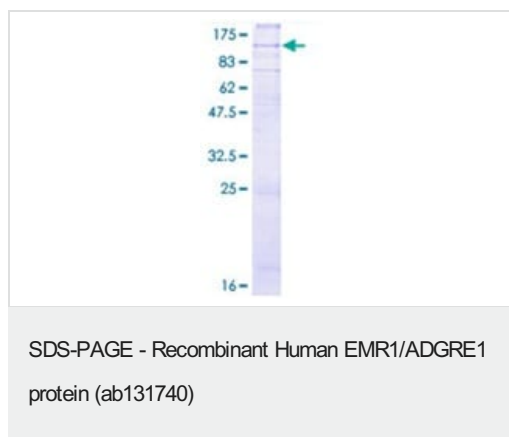
---

<b>Function</b>	Orphan receptor involved in cell adhesion and probably in cell-cell interactions specifically involving cells of the immune system. May play a role in regulatory T-cells (Treg) development.
<b>Tissue specificity</b>	Expression is restricted to eosinophils.
<b>Sequence similarities</b>	Belongs to the G-protein coupled receptor 2 family. Adhesion G-protein coupled receptor (ADGR) subfamily. Contains 6 EGF-like domains. Contains 1 GPS domain.
<b>Cellular localization</b>	Cell membrane.

---

## Images

---



12.5% SDS-PAGE analysis of ab131740, stained with Coomassie Blue.

**Please note:** All products are "FOR RESEARCH USE ONLY. NOT FOR USE IN DIAGNOSTIC PROCEDURES"

### Our Abpromise to you: Quality guaranteed and expert technical support

---

- Replacement or refund for products not performing as stated on the datasheet
- Valid for 12 months from date of delivery
- Response to your inquiry within 24 hours
- We provide support in Chinese, English, French, German, Japanese and Spanish
- Extensive multi-media technical resources to help you
- We investigate all quality concerns to ensure our products perform to the highest standards

If the product does not perform as described on this datasheet, we will offer a refund or replacement. For full details of the Abpromise, please visit <https://www.abcam.com/abpromise> or contact our technical team.

### Terms and conditions

---

- Guarantee only valid for products bought direct from Abcam or one of our authorized distributors