

Product datasheet

Recombinant Human EN2 protein ab158360

[1 Image](#)

Description

Product name	Recombinant Human EN2 protein
Expression system	Wheat germ
Accession	<u>P19622</u>
Protein length	Protein fragment
Animal free	No
Nature	Recombinant
Species	Human
Sequence	GTCCAGAGGGRRGGGAGGEGGASGAEGGGGAGGSEQLL GSGSREPRQNPPC APGAGGPLPAAGSDSPGDGEGGSKTSLHGGAKKGGDP GGPLDGSLKARG LGGGDLVSSDSDSSQAGANLGAQP
Amino acids	86 to 210
Tags	GST tag N-Terminus

Specifications

Our **Abpromise guarantee** covers the use of **ab158360** in the following tested applications.

The application notes include recommended starting dilutions; optimal dilutions/concentrations should be determined by the end user.

Applications	ELISA Western blot
Form	Liquid
Additional notes	

Preparation and Storage

Stability and Storage	Shipped on dry ice. Upon delivery aliquot and store at -80°C. Avoid freeze / thaw cycles. pH: 8.00 Constituents: 0.31% Glutathione, 0.79% Tris HCl
------------------------------	--

General Info

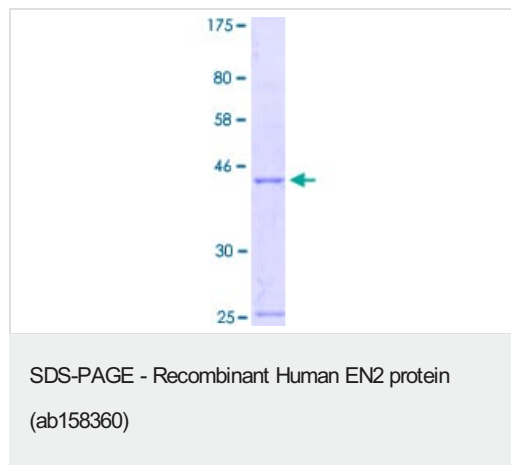
Relevance

EN1 and EN2 encode homeodomain containing proteins and have been implicated in the control of pattern formation during development of the central nervous system. EN2 may play a role in susceptibility to autism spectrum disorders.

Cellular localization

Nuclear

Images



ab158360 on a 12.5% SDS-PAGE stained with Coomassie Blue.

Please note: All products are "FOR RESEARCH USE ONLY. NOT FOR USE IN DIAGNOSTIC PROCEDURES"

Our Abpromise to you: Quality guaranteed and expert technical support

- Replacement or refund for products not performing as stated on the datasheet
- Valid for 12 months from date of delivery
- Response to your inquiry within 24 hours
- We provide support in Chinese, English, French, German, Japanese and Spanish
- Extensive multi-media technical resources to help you
- We investigate all quality concerns to ensure our products perform to the highest standards

If the product does not perform as described on this datasheet, we will offer a refund or replacement. For full details of the Abpromise, please visit <https://www.abcam.com/abpromise> or contact our technical team.

Terms and conditions

- Guarantee only valid for products bought direct from Abcam or one of our authorized distributors