

Recombinant human ENO1 protein (Active) ab89248

1 References 2 Images

Description

Product name	Recombinant human ENO1 protein (Active)
Biological activity	<p>Specific activity is &gt; 20,000pmol/min/ug.</p> <p>Obtained by measuring the decrease of NAD in absorbance at 340nm resulting from NADH at pH 6.5 at 37C.</p>
Purity	<p>&gt; 95 % SDS-PAGE.</p> <p>ab89248 is purified using conventional chromatography techniques.</p>
Endotoxin level	< 1.000 Eu/µg
Expression system	Escherichia coli
Accession	<u>P06733</u>
Protein length	Full length protein
Animal free	No
Nature	Recombinant
Species	Human
Sequence	<p>MSILKIHARE IFDSRGNPTV EVDLFTSKGL FRAAVPSGAS TGIYEALRLR DNDKTRYMGK GVSKAVEHIN KTIAPALVSK KLVNTEQEKI DKLMIEMDGT ENKSKFGANA ILGVSLAVCK AGAVEKGVPL YRHIADLAGN SEVILPVPF NVIINGGSHAG NKLAMQEFMI LPVGAANFRE AMRIGAEVYH NLKNVIKEY GKDATNVGDE GGFAPNILEN KEGLELLKTA IGKAGYTDKV VIGMDVAASE FFRSGKYDLD FKSPDDPSRY ISPDQLADLY KSFIKDYPVV SIEDPFDQDD WGAWQKFTAS AGIQVVGDDL TVTNPKRIAK AVNEKSCNCL LLKVNQIGSV TESLQACKLA QANGWGMVS HRSGETEDTF IADLVVGLCT GQIKTGAPCR SERLAKYNQL LRIEELGSK AKFAGRNFN PLAK</p>
Predicted molecular weight	47 kDa
Amino acids	1 to 434
Additional sequence information	NCBI: NP_001419

Specifications

Our **Abpromise guarantee** covers the use of **ab89248** in the following tested applications.

The application notes include recommended starting dilutions; optimal dilutions/concentrations should be determined by the end user.

<b>Applications</b>	Functional Studies
	Western blot
	SDS-PAGE
<b>Form</b>	Liquid
<b>Additional notes</b>	MW confirmed by MALDI-TOF.
	Endotoxin level determined by LAL method.

## Preparation and Storage

---

<b>Stability and Storage</b>	Shipped at 4°C. Store at +4°C short term (1-2 weeks). Upon delivery aliquot. Store at -20°C or -80°C. Avoid freeze / thaw cycle.  pH: 7.50 Constituents: 0.316% Tris HCl, 10% Glycerol (glycerin, glycerine), 0.012% Magnesium sulphate  This product is an active protein and may elicit a biological response in vivo, handle with caution.
------------------------------	--

## General Info

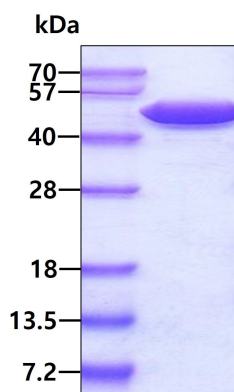
---

<b>Function</b>	Multifunctional enzyme that, as well as its role in glycolysis, plays a part in various processes such as growth control, hypoxia tolerance and allergic responses. May also function in the intravascular and pericellular fibrinolytic system due to its ability to serve as a receptor and activator of plasminogen on the cell surface of several cell-types such as leukocytes and neurons. Stimulates immunoglobulin production.  MBP1 binds to the myc promoter and acts as a transcriptional repressor. May be a tumor suppressor.
<b>Tissue specificity</b>	The alpha/alpha homodimer is expressed in embryo and in most adult tissues. The alpha/beta heterodimer and the beta/beta homodimer are found in striated muscle, and the alpha/gamma heterodimer and the gamma/gamma homodimer in neurons.
<b>Pathway</b>	Carbohydrate degradation; glycolysis; pyruvate from D-glyceraldehyde 3-phosphate: step 4/5.
<b>Sequence similarities</b>	Belongs to the enolase family.
<b>Developmental stage</b>	During ontogenesis, there is a transition from the alpha/alpha homodimer to the alpha/beta heterodimer in striated muscle cells, and to the alpha/gamma heterodimer in nerve cells.
<b>Post-translational modifications</b>	ISGylated.
<b>Cellular localization</b>	Nucleus and Cytoplasm. Cell membrane. Cytoplasm > myofibril > sarcomere > M line. Can translocate to the plasma membrane in either the homodimeric (alpha/alpha) or heterodimeric (alpha/gamma) form. ENO1 is localized to the M line.

---

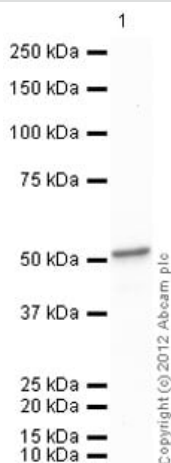
## Images

---



SDS-PAGE - Recombinant human ENO1 protein  
(Active) (ab89248)

SDS-PAGE of ab89248 (3µg) under reducing condition and visualized by coomassie blue stain.



Western blot - Recombinant Human ENO1 protein  
(ab89248)

Anti-ENO1 antibody (**ab85086**) at 1/1000 dilution + Recombinant human ENO1 protein (Active) (ab89248) at 0.1 µg

### Secondary

Goat Anti-Rabbit IgG H&L (HRP) preadsorbed (**ab97080**) at 1/5000 dilution

Developed using the ECL technique.

Performed under reducing conditions.

**Predicted band size:** 47 kDa

**Exposure time:** 30 seconds

**Please note:** All products are "FOR RESEARCH USE ONLY. NOT FOR USE IN DIAGNOSTIC PROCEDURES"

### Our Abpromise to you: Quality guaranteed and expert technical support

- Replacement or refund for products not performing as stated on the datasheet
- Valid for 12 months from date of delivery
- Response to your inquiry within 24 hours
- We provide support in Chinese, English, French, German, Japanese and Spanish
- Extensive multi-media technical resources to help you
- We investigate all quality concerns to ensure our products perform to the highest standards

If the product does not perform as described on this datasheet, we will offer a refund or replacement. For full details of the Abpromise, please visit <https://www.abcam.com/abpromise> or contact our technical team.

#### **Terms and conditions**

---

- Guarantee only valid for products bought direct from Abcam or one of our authorized distributors