

Product datasheet

Recombinant Human EPCR/CD201 protein (Fc Chimera) ab221306

1 Image

Description	
Product name	Recombinant Human EPCR/CD201 protein (Fc Chimera)
Purity	> 95 % SDS-PAGE.
Endotoxin level	< 1.000 Eu/µg
Expression system	HEK 293 cells
Accession	<u>Q9UNN8</u>
Protein length	Protein fragment
Animal free	No
Nature	Recombinant
Species	Human
Sequence	SQDASDGLQRLHMLQISYFRDPYHVWYQGNASLGGHLTH VLEGPDTNTTI IQLQPLQEPESWARTQSGLQSYLLQFHGLVRLVHQERTLA FPLTIRCFLG CELPPEGSRAHVFFEVAVNGSSFVSFRPERALWQADTQ VTSGVVFTLQQ LNAYNRTRYELREFLEDTCVQYVQKHISAENTKGSQTSRS YT
Predicted molecular weight	49 kDa including tags
Amino acids	18 to 209
Additional sequence information	Fused with Fc fragment of Human IgG1 at the C terminus.

Specifications	
Our Abpromise guarantee covers the use of ab221306 in the following tested applications.	
The application notes include recommended starting dilutions; optimal dilutions/concentrations should be determined by the end user.	
Applications	SDS-PAGE
Form	Lyophilized

Preparation and Storage

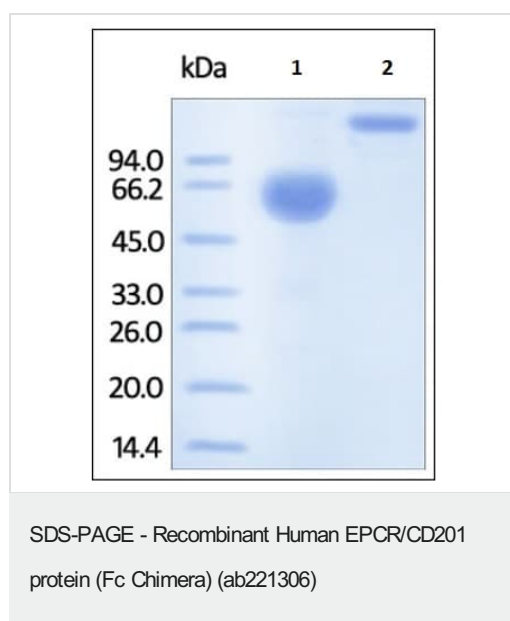
Preparation and Storage

Stability and Storage	Shipped at 4°C. Store at -20°C long term. Avoid freeze / thaw cycle. Working aliquots stored with a carrier protein are stable for at least 3 months at -20°C to -80°C.. pH: 7.4 Constituents: 5% Trehalose, 0.75% Glycine, 0.61% Tris buffer
Reconstitution	Reconstitute with sterile deionized water to a concentration of 1 mg/ml.

General Info

Function	Binds activated protein C. Enhances protein C activation by the thrombin-thrombomodulin complex; plays a role in the protein C pathway controlling blood coagulation.
Tissue specificity	Expressed strongly in the endothelial cells of arteries and veins in heart and lung, less intensely in capillaries in the lung and skin, and not at all in the endothelium of small vessels of the liver and kidney.
Post-translational modifications	N-glycosylated. A soluble form exists; probably released by a metalloprotease. Seems to have the same activity as the membrane-bound form.
Cellular localization	Membrane.

Images



SDS-PAGE - Human EPCR/CD201 protein (Fc Chimera) (ab221306)

Lane 1: DTT-reduced.

Lane 2: Non-reduced.

Staining overnight with Coomassie Blue.

Please note: All products are "FOR RESEARCH USE ONLY. NOT FOR USE IN DIAGNOSTIC PROCEDURES"

Our Abpromise to you: Quality guaranteed and expert technical support

- Replacement or refund for products not performing as stated on the datasheet
- Valid for 12 months from date of delivery
- Response to your inquiry within 24 hours

- We provide support in Chinese, English, French, German, Japanese and Spanish
- Extensive multi-media technical resources to help you
- We investigate all quality concerns to ensure our products perform to the highest standards

If the product does not perform as described on this datasheet, we will offer a refund or replacement. For full details of the Abpromise, please visit <https://www.abcam.com/abpromise> or contact our technical team.

Terms and conditions

- Guarantee only valid for products bought direct from Abcam or one of our authorized distributors