

Recombinant Human EPDR1 protein ab162830

1 References 1 Image

Description

|                   |  |  |
|-------------------|--|--|
| Product name      | Recombinant Human EPDR1 protein  |  |
| Expression system | Wheat germ   |  |
| Accession         | <u>Q9UM22</u>  |  |
| Protein length    | Full length protein  |  |
| Animal free       | No   |  |
| Nature            | Recombinant  |  |
| Species           | Human  |  |
| Sequence          | APRPCQAPQQWEGRQVMYQQSSGRNSRALLSYDGLNQ<br>RVRVLDERKALIP<br>CKRLFEYILLYKDGVMFQIDQATKQCSKMTLTQPWDPLDIP<br>QNSTFEDQY<br>SIGGPQEQITVQEWSDRKSARSYETWIGIYTVKDCYPVQET<br>FTINYSVIL<br>STRFFDIQLGIKDPSVFTPPSTCQMAQLEKMSSEDCSW |  |
| Amino acids       | 38 to 224  |  |
| Tags              | GST tag N-Terminus   |  |

Specifications

|  |                       |
|--|-----------------------|
| Our <u>Abpromise guarantee</u> covers the use of <b>ab162830</b> in the following tested applications.                               |                       |
| The application notes include recommended starting dilutions; optimal dilutions/concentrations should be determined by the end user. |                       |
| Applications   | Western blot<br>ELISA |
| Form   | Liquid                |
| Additional notes   |                       |

Preparation and Storage

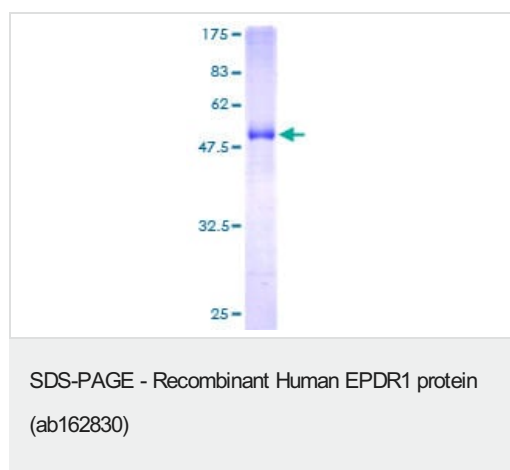
|                       |   |
|-----------------------|---|
| Stability and Storage | Shipped on dry ice. Upon delivery aliquot and store at -80°C. Avoid freeze / thaw cycles.<br>pH: 8.00 |
|-----------------------|---|

Constituents: 0.31% Glutathione, 0.79% Tris HCl

## General Info

|                              |   |
|------------------------------|---|
| <b>Relevance</b>             | EPDR1 is a type II transmembrane protein and is similar to two families of cell adhesion molecules, the protocadherins and ependymins. It may play a role in calcium dependent cell adhesion. There are two named isoforms. |
| <b>Cellular localization</b> | Secreted  |

## Images



ab162830 on a 12.5% SDS-PAGE stained with Coomassie Blue.

**Please note:** All products are "FOR RESEARCH USE ONLY. NOT FOR USE IN DIAGNOSTIC PROCEDURES"

## Our Abpromise to you: Quality guaranteed and expert technical support

- Replacement or refund for products not performing as stated on the datasheet
- Valid for 12 months from date of delivery
- Response to your inquiry within 24 hours
- We provide support in Chinese, English, French, German, Japanese and Spanish
- Extensive multi-media technical resources to help you
- We investigate all quality concerns to ensure our products perform to the highest standards

If the product does not perform as described on this datasheet, we will offer a refund or replacement. For full details of the Abpromise, please visit <https://www.abcam.com/abpromise> or contact our technical team.

## Terms and conditions

- Guarantee only valid for products bought direct from Abcam or one of our authorized distributors