

## Product datasheet

# Recombinant human Eph receptor B4/HTK protein ab126932

[4 Images](#)

### Description

---

|                                   |                                                                                                       |
|-----------------------------------|-------------------------------------------------------------------------------------------------------|
| <b>Product name</b>               | Recombinant human Eph receptor B4/HTK protein                                                         |
| <b>Biological activity</b>        | The specific activity of ab126932 was determined to be 410nmol/min/mg as per activity assay protocol. |
| <b>Purity</b>                     | > 95 % SDS-PAGE.<br>Assessed by densitometry. Affinity purified.                                      |
| <b>Expression system</b>          | Baculovirus infected Sf9 cells                                                                        |
| <b>Accession</b>                  | <b><u>P54760</u></b>                                                                                  |
| <b>Protein length</b>             | Protein fragment                                                                                      |
| <b>Animal free</b>                | No                                                                                                    |
| <b>Nature</b>                     | Recombinant                                                                                           |
| <b>Species</b>                    | Human                                                                                                 |
| <b>Predicted molecular weight</b> | 50 kDa including tags                                                                                 |
| <b>Amino acids</b>                | 561 to 987                                                                                            |

### Specifications

---

Our **Abpromise guarantee** covers the use of **ab126932** in the following tested applications.

The application notes include recommended starting dilutions; optimal dilutions/concentrations should be determined by the end user.

|                         |                                                                                                                                                                       |
|-------------------------|-----------------------------------------------------------------------------------------------------------------------------------------------------------------------|
| <b>Applications</b>     | Western blot<br>SDS-PAGE<br>Functional Studies                                                                                                                        |
| <b>Form</b>             | Liquid                                                                                                                                                                |
| <b>Additional notes</b> | <b>ab204877</b> (Poly (4:1 Glu, Tyr) peptide) can be utilized as a substrate for assessing kinase activity<br>This product was previously labelled as Eph receptor B4 |

### Preparation and Storage

---

## Stability and Storage

Shipped on dry ice. Upon delivery aliquot and store at -80°C. Avoid freeze / thaw cycles.

pH: 7.00

Preservative: 1.02% Imidazole

Constituents: 0.002% PMSF, 0.81% Sodium phosphate, 0.004% DTT, 25% Glycerol (glycerin, glycerine), 1.76% Sodium chloride

This product is an active protein and may elicit a biological response in vivo, handle with caution.

## General Info

---

### Function

Receptor for members of the ephrin-B family. Binds to ephrin-B2. May have a role in events mediating differentiation and development.

### Tissue specificity

Abundantly expressed in placenta and in a range of primary tissues and malignant cell lines. Expressed in fetal, but not adult, brain, and in primitive and myeloid, but not lymphoid, hematopoietic cells.

### Sequence similarities

Belongs to the protein kinase superfamily. Tyr protein kinase family. Ephrin receptor subfamily. Contains 2 fibronectin type-III domains. Contains 1 protein kinase domain. Contains 1 SAM (sterile alpha motif) domain.

### Post-translational modifications

Autophosphorylated.

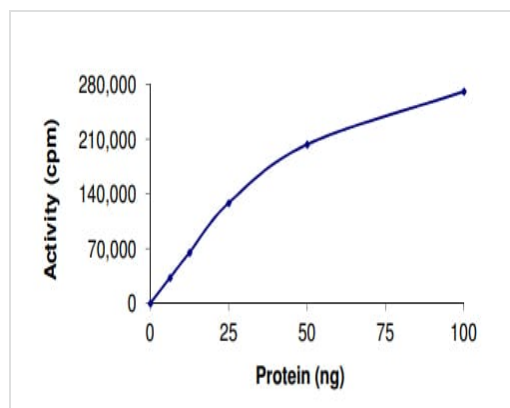
### Cellular localization

Membrane.

---

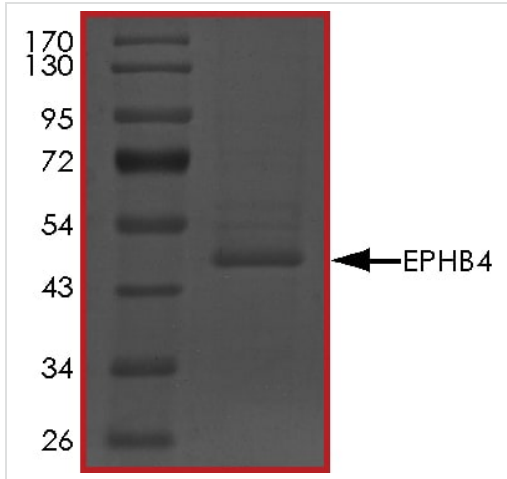
## Images

---



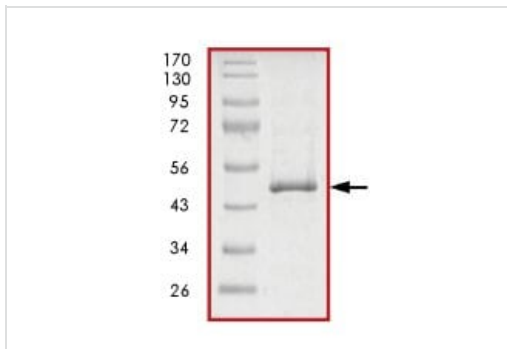
The specific activity of Eph receptor B4/HTK (ab126932) was determined to be 350 nmol/min/mg as per activity assay protocol

Functional Studies - Recombinant human Eph receptor B4/HTK protein (ab126932)



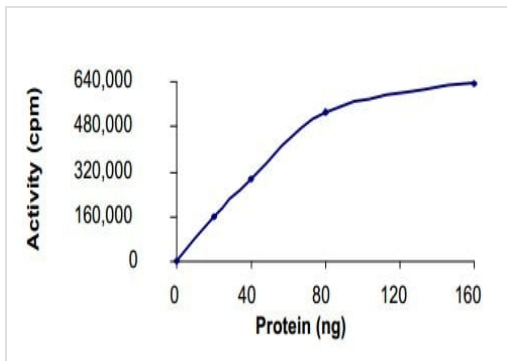
SDS PAGE analysis of ab126932

SDS-PAGE - Recombinant human Eph receptor B4/HTK protein (ab126932)



SDS-PAGE analysis of ab126932.

SDS-PAGE - Recombinant human Eph receptor B4/HTK protein (ab126932)



The specific activity of ab126932 was determined to be 410nmol/min/mg as per activity assay protocol.

Functional Studies - Recombinant human Eph receptor B4/HTK protein (ab126932)

**Please note:** All products are "FOR RESEARCH USE ONLY. NOT FOR USE IN DIAGNOSTIC PROCEDURES"

### **Our Abpromise to you: Quality guaranteed and expert technical support**

---

- Replacement or refund for products not performing as stated on the datasheet
- Valid for 12 months from date of delivery
- Response to your inquiry within 24 hours
- We provide support in Chinese, English, French, German, Japanese and Spanish
- Extensive multi-media technical resources to help you
- We investigate all quality concerns to ensure our products perform to the highest standards

If the product does not perform as described on this datasheet, we will offer a refund or replacement. For full details of the Abpromise, please visit <https://www.abcam.com/abpromise> or contact our technical team.

### **Terms and conditions**

---

- Guarantee only valid for products bought direct from Abcam or one of our authorized distributors