

Product datasheet

Recombinant Human Ephrin B2 protein ab92862

1 Image

Description

| | |
|--------------------------|--|
| Product name | Recombinant Human Ephrin B2 protein |
| Purity | > 99 % SDS-PAGE. Purified by affinity chromatography. |
| Expression system | HEK 293 cells |
| Protein length | Protein fragment |
| Animal free | No |
| Nature | Recombinant |
| Species | Human |
| Amino acids | 1 to 227 |
| Tags | His tag C-Terminus , Fc tag C-Terminus |

Specifications

Our **Abpromise guarantee** covers the use of **ab92862** in the following tested applications.

The application notes include recommended starting dilutions; optimal dilutions/concentrations should be determined by the end user.

| | |
|-------------------------|---|
| Applications | Western blot ELISA SDS-PAGE |
| Form | Lyophilized |
| Additional notes | After reconstitution, store in working aliquots at -80°C. |

Preparation and Storage

| | |
|------------------------------|--|
| Stability and Storage | Shipped at 4°C. Store at +4°C short term (1-2 weeks). Upon delivery aliquot. Store at +4°C. Please see notes section. pH: 7.40 Constituent: PBS |
| Reconstitution | Please add 20ul of PBS to make 0.5mg/ml |

General Info

Function

Cell surface transmembrane ligand for Eph receptors, a family of receptor tyrosine kinases which are crucial for migration, repulsion and adhesion during neuronal, vascular and epithelial development. Binds promiscuously Eph receptors residing on adjacent cells, leading to contact-dependent bidirectional signaling into neighboring cells. The signaling pathway downstream of the receptor is referred to as forward signaling while the signaling pathway downstream of the ephrin ligand is referred to as reverse signaling. Binds to receptor tyrosine kinase including EPHA4, EPHA3 and EPHB4. Together with EPHB4 plays a central role in heart morphogenesis and angiogenesis through regulation of cell adhesion and cell migration. EPHB4-mediated forward signaling controls cellular repulsion and segregation from EFN2-expressing cells. May play a role in constraining the orientation of longitudinally projecting axons. (Microbial infection) Acts as a receptor for Hendra virus and Nipah virus.

Tissue specificity

Lung and kidney.

Sequence similarities

Belongs to the ephrin family.
Contains 1 ephrin RBD (ephrin receptor-binding) domain.

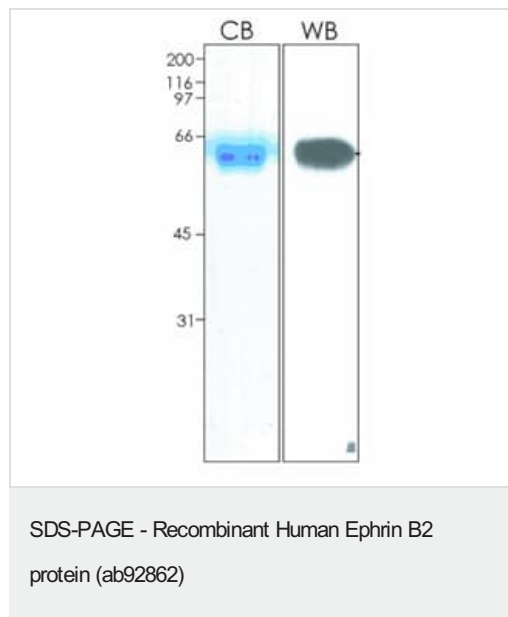
Post-translational modifications

Inducible phosphorylation of tyrosine residues in the cytoplasmic domain.

Cellular localization

Membrane.

Images



10% SDS-PAGE of ab92862 stained with Coomassie Blue (CB) and immunoblotted with polyclonal antibody against Human Ephrin B2 (WB)

Please note: All products are "FOR RESEARCH USE ONLY. NOT FOR USE IN DIAGNOSTIC PROCEDURES"

Our Abpromise to you: Quality guaranteed and expert technical support

- Replacement or refund for products not performing as stated on the datasheet
- Valid for 12 months from date of delivery
- Response to your inquiry within 24 hours

- We provide support in Chinese, English, French, German, Japanese and Spanish
- Extensive multi-media technical resources to help you
- We investigate all quality concerns to ensure our products perform to the highest standards

If the product does not perform as described on this datasheet, we will offer a refund or replacement. For full details of the Abpromise, please visit <https://www.abcam.com/abpromise> or contact our technical team.

Terms and conditions

- Guarantee only valid for products bought direct from Abcam or one of our authorized distributors