

Product datasheet

Recombinant Human ESM1 protein (denatured) ab139204

[1 Image](#)

Description

| | |
|-----------------------------------|-----------------------------------------------------------------------------------------------------------------------------------------------------------------------------------------------------------------------------------|
| Product name | Recombinant Human ESM1 protein (denatured) |
| Purity | > 90 % SDS-PAGE. |
| Expression system | Escherichia coli |
| Accession | <u>Q9NQ30</u> |
| Protein length | Full length protein |
| Animal free | No |
| Nature | Recombinant |
| Species | Human |
| Sequence | MGSSHHHHHH SSGLVPRGSH MGSWSNNYAV DCPQHCDSS E CKSSPRCKRT VLDDCGCCR V CAAGRGETCY RTVSGMDGMK CGPGLRCQPS NGEDPFGEEF GICKDCPYGT FGMDCRETCN CQSGICDRGT GKCLKFPFFQ YSVTKSSNRF VSLTEHDMAS GDGNVREEV VKENAAGSPV MRKWLNPR |
| Predicted molecular weight | 21 kDa including tags |
| Amino acids | 20 to 184 |
| Tags | His tag N-Terminus |

Specifications

Our **Abpromise guarantee** covers the use of **ab139204** in the following tested applications.

The application notes include recommended starting dilutions; optimal dilutions/concentrations should be determined by the end user.

Applications SDS-PAGE

Form Liquid

Preparation and Storage

Stability and Storage Shipped at 4°C. Store at +4°C short term (1-2 weeks). Upon delivery aliquot. Store at -20°C or -

80°C. Avoid freeze / thaw cycle.

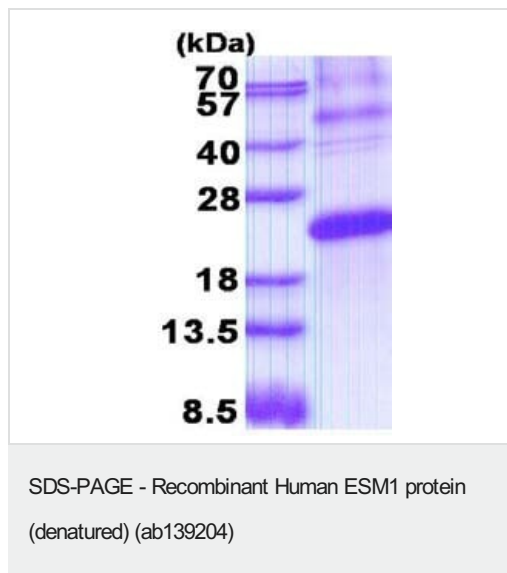
pH: 8.00

Constituents: 1.2% Urea, 0.32% Tris HCl, 10% Glycerol (glycerin, glycerine)

General Info

| | |
|-----------------------------------------|----------------------------------------------------------------------------------------------------------------|
| Function | May have potent implications in lung endothelial cell-leukocyte interactions. |
| Tissue specificity | Expressed in lung, on the vascular capillary network within alveolar walls, and also at lower level in kidney. |
| Sequence similarities | Contains 1 IGFBP N-terminal domain. |
| Post-translational modifications | May contain intrachain disulfide bonds. |
| Cellular localization | Secreted. |

Images



15% SDS-PAGE analysis of ab139204 (3µg)

Please note: All products are "FOR RESEARCH USE ONLY. NOT FOR USE IN DIAGNOSTIC PROCEDURES"

Our Abpromise to you: Quality guaranteed and expert technical support

- Replacement or refund for products not performing as stated on the datasheet
- Valid for 12 months from date of delivery
- Response to your inquiry within 24 hours
- We provide support in Chinese, English, French, German, Japanese and Spanish
- Extensive multi-media technical resources to help you
- We investigate all quality concerns to ensure our products perform to the highest standards

If the product does not perform as described on this datasheet, we will offer a refund or replacement. For full details of the Abpromise, please visit <https://www.abcam.com/abpromise> or contact our technical team.

Terms and conditions

- Guarantee only valid for products bought direct from Abcam or one of our authorized distributors