

Recombinant Human ESRP1 protein ab162859

1 Image

Description

Product name	Recombinant Human ESRP1 protein
Expression system	Wheat germ
Protein length	Full length protein
Animal free	No
Nature	Recombinant
Species	Human
Sequence	MTASPDYLVVLFGITAGATGAKLGSDEKELILLFWKVVDLA NKKVGQLHE VLVRPDQLELTEDCKEETKIDVESLSSASQLDQALRQFNQ SVSNELNIGV GTSFCLCTDGQLHVRQILHPEASKKNVLLPECFYSFFDLR KEFKKCCPGS PDIDKLDVATMTEYLNFEKSSSVSRYGASQVEDMGNIILAM ISEPYNHRF SDPERVNYKFESGTCSELMELIDDNTVVRARGLPWQSSDQ DIARFFKGLNI AKGGAALCLNAQGRRNGEALVRFVSEEHRDLALQRHKH HMGTRYIEVYKA TGEDFLKIAGGTSNEVAQFLSKENQVIVRMRLPFTATAE EVVAFFGQHC PITGGKEGILFVTYPDGRPTGDAFVLFACEEYAQNALRKHK DLLGKRYIE LFRSTAAEVQQVLNRFSSAPLIPLTPPIIPVLPQQFVPPTN VRDCIRLR GLPYAATIEDILDFLGEFATDIRTHGVHMLNHQGRPSGDA FIQMKSAADR AFMAAQKCHKKNMKDRYVEVFQCSAEEMNFVLMGGTLN RNLSPPPCKLP CLSPPSYTFPAPAAVIPTEAANYQPSVILNPRALQPSTAYYP AGTQLFMN YTAYPSPPGSPNSLGYFPTAANLSGVPPQPQGTVVRMQG LAYNTGVKEIL NFFQGYQYATEDGLIHTNDQARTLPKEWVCI
Amino acids	1 to 681

Tags

GST tag N-Terminus

Specifications

Our **Abpromise guarantee** covers the use of **ab162859** in the following tested applications.

The application notes include recommended starting dilutions; optimal dilutions/concentrations should be determined by the end user.

Applications	Western blot
	ELISA
Form	Liquid
Additional notes	This product was previously labelled as RBM35A.

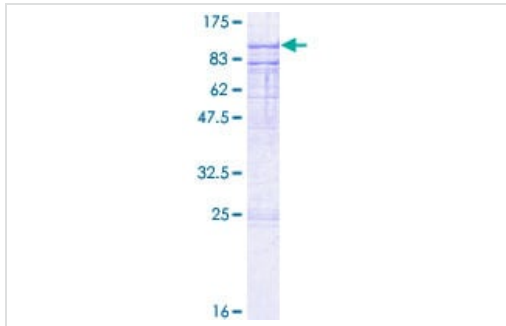
Preparation and Storage

Stability and Storage	Shipped on dry ice. Upon delivery aliquot and store at -80°C. Avoid freeze / thaw cycles.
	pH: 8.00
	Constituents: 0.31% Glutathione, 0.79% Tris HCl

General Info

Function	mRNA splicing factor that regulates the formation of epithelial cell-specific isoforms. Specifically regulates the expression of FGFR2-IIIb, an epithelial cell-specific isoform of FGFR2. Also regulates the splicing of CD44, CTNND1, ENAH, 3 transcripts that undergo changes in splicing during the epithelial-to-mesenchymal transition (EMT). Acts by directly binding specific sequences in mRNAs. Binds the GU-rich sequence motifs in the ISE/ISS-3, a cis-element regulatory region present in the mRNA of FGFR2.
Tissue specificity	Epithelial cell-specific.
Sequence similarities	Belongs to the ESRP family. Contains 3 RRM (RNA recognition motif) domains.
Cellular localization	Nucleus.

Images



SDS-PAGE - Recombinant Human ESRP1 protein
(ab162859)

ab162859 on a 12.5% SDS-PAGE stained with Coomassie Blue.

Please note: All products are "FOR RESEARCH USE ONLY. NOT FOR USE IN DIAGNOSTIC PROCEDURES"

Our Abpromise to you: Quality guaranteed and expert technical support

- Replacement or refund for products not performing as stated on the datasheet
- Valid for 12 months from date of delivery
- Response to your inquiry within 24 hours
- We provide support in Chinese, English, French, German, Japanese and Spanish
- Extensive multi-media technical resources to help you
- We investigate all quality concerns to ensure our products perform to the highest standards

If the product does not perform as described on this datasheet, we will offer a refund or replacement. For full details of the Abpromise, please visit <https://www.abcam.com/abpromise> or contact our technical team.

Terms and conditions

- Guarantee only valid for products bought direct from Abcam or one of our authorized distributors