

## Product datasheet

# Recombinant Human FABP6 protein ab87381

1 Image

### Description

<b>Product name</b>	Recombinant Human FABP6 protein
<b>Biological activity</b>	ab87381 corresponds to isoform 2, 128 aas.
<b>Purity</b>	> 95 % SDS-PAGE. Purified by using conventional chromatography techniques.
<b>Expression system</b>	Escherichia coli
<b>Protein length</b>	Full length protein
<b>Animal free</b>	No
<b>Nature</b>	Recombinant
<b>Species</b>	Human
<b>Sequence</b>	MAFTGKFEME SEKNYDEFMK LLGISSDVIE KAHNFKIVTE VQQDGQDFTW SQHYYGHTM TNKFTVGKES NIQTMGGKTF KATVQMEGGK LVVNFPNYHQ TSEVGDCLV EVSTIGGVTY ERVSKRLA

### Specifications

Our **Abpromise guarantee** covers the use of **ab87381** in the following tested applications.

The application notes include recommended starting dilutions; optimal dilutions/concentrations should be determined by the end user.

<b>Applications</b>	SDS-PAGE
<b>Form</b>	Liquid
<b>Additional notes</b>	ab87381 corresponds to isoform 2, 128 aas.

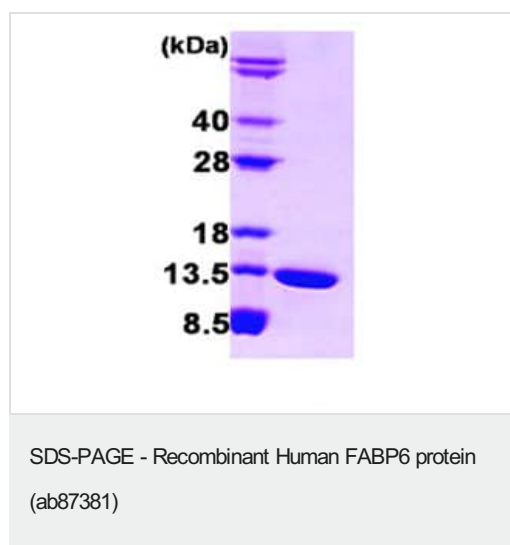
### Preparation and Storage

<b>Stability and Storage</b>	Shipped at 4°C. Store at +4°C. pH: 7.40 Constituents: PBS, 10% Glycerol (glycerin, glycerine)
------------------------------	---

### General Info

<b>Function</b>	Ileal protein which stimulates gastric acid and pepsinogen secretion. Seems to be able to bind to bile salts and bilirubins. Isoform 2 is essential for the survival of colon cancer cells to bile acid-induced apoptosis.
<b>Tissue specificity</b>	Isoform 2 is expressed in colorectal adenocarcinomas and their adjacent normal mucosa (at protein level). Isoform 1 is expressed in the jejunum, ileum, cecum and ascending colon intestine. Isoform 2 is expressed in the gallbladder, duodenum, jejunum, ileum, cecum, ascending, transverse and descending colon, sigmoid colon and rectum.
<b>Sequence similarities</b>	Belongs to the calycin superfamily. Fatty-acid binding protein (FABP) family.
<b>Domain</b>	Forms a beta-barrel structure that accommodates the hydrophobic ligand in its interior.
<b>Cellular localization</b>	Cytoplasm and Cytoplasm. Localized close to nucleus on the apical side of both normal and neoplastic cells.

## Images



ab87381 on 15% SDS-PAGE (3µg)

**Please note:** All products are "FOR RESEARCH USE ONLY. NOT FOR USE IN DIAGNOSTIC PROCEDURES"

## Our Abpromise to you: Quality guaranteed and expert technical support

- Replacement or refund for products not performing as stated on the datasheet
- Valid for 12 months from date of delivery
- Response to your inquiry within 24 hours
- We provide support in Chinese, English, French, German, Japanese and Spanish
- Extensive multi-media technical resources to help you
- We investigate all quality concerns to ensure our products perform to the highest standards

If the product does not perform as described on this datasheet, we will offer a refund or replacement. For full details of the Abpromise, please visit <https://www.abcam.com/abpromise> or contact our technical team.

## Terms and conditions

- Guarantee only valid for products bought direct from Abcam or one of our authorized distributors