

## Product datasheet

# Recombinant Human Fascin protein ab99240

1 Image

### Description

<b>Product name</b>	Recombinant Human Fascin protein
<b>Purity</b>	> 95 % SDS-PAGE. ab99240 is purified using conventional chromatography techniques.
<b>Expression system</b>	Escherichia coli
<b>Accession</b>	<u><b>Q16658</b></u>
<b>Protein length</b>	Full length protein
<b>Animal free</b>	No
<b>Nature</b>	Recombinant
<b>Species</b>	Human
<b>Sequence</b>	<p>MGSSHHHHHH SSGLVPRGSH MTANGTAEAV          QIQFGLINCG NKYLTAEEFG FKVNASASSL KKKQWLTLEQ          PPDEAGSAAV CLRSHLGRYL AADKDGNTVC          EREVPGPDCR FLVAHDDGR WSLQSEAHRR          YFGGTEDRLS CFAQTVSPAE KWSVHIAMHP          QVNIYSVTRK RYAHLSARPA DEIAVDRDVP WGVDSLITLA          FQDQRYSVQT ADHRFLRHDG RLVARPEPAT          GYTLEFRSGK VAFRDCEGRY LAPSGPSGTL          KAGKATKV GK DELFALEQSC AQVVLQAANE          RNVSTRQGMD LSAHQDEETD QETFQLEIDR          DTKKCAFRTH TGKYWTLTAT GGVQSTASSK          NASCYFDIEW RDRRITLRAS NGKFVTSKKN          GQLAASVETA GDSEFLMKL INRPVIFRG EHGFIGCRKV          TGTLDANRSS YDVFQLEFND GAYNIKDSTG          KYWTVGSDSA VTSSGDT PVD FFEFC DYNK          VAIKVGGRYL KGDHAGVLKA SAETVDPASL WEY</p>
<b>Predicted molecular weight</b>	57 kDa including tags
<b>Amino acids</b>	1 to 493
<b>Tags</b>	His tag N-Terminus

### Specifications

Our **Abpromise guarantee** covers the use of **ab99240** in the following tested applications.

The application notes include recommended starting dilutions; optimal dilutions/concentrations should be determined by the end user.

**Applications** SDS-PAGE

**Form** Liquid

## Preparation and Storage

**Stability and Storage** Shipped at 4°C. Upon delivery aliquot and store at -20°C or -80°C. Avoid repeated freeze / thaw cycles.

pH: 8.00

Constituents: 0.0308% DTT, 0.316% Tris HCl, 20% Glycerol (glycerin, glycerine), 0.58% Sodium chloride

## General Info

**Function** Organizes filamentous actin into bundles with a minimum of 4.1:1 actin/fascin ratio. Plays a role in the organization of actin filament bundles and the formation of microspikes, membrane ruffles, and stress fibers. Important for the formation of a diverse set of cell protrusions, such as filopodia, and for cell motility and migration.

**Tissue specificity** Ubiquitous.

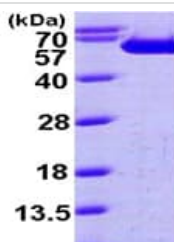
**Sequence similarities** Belongs to the fascin family.

**Domain** Composed of four beta-trefoil domains.

**Post-translational modifications** Phosphorylation on Ser-39 inhibits the actin-binding ability of fascin.

**Cellular localization** Cytoplasm > cytoskeleton. Cell projection > filopodium. Cell projection > invadopodium.

## Images



15% SDS-PAGE showing ab99240 at approximately 56.7kDa (3µg).

SDS-PAGE - Recombinant Human Fascin protein  
(ab99240)

**Please note:** All products are "FOR RESEARCH USE ONLY. NOT FOR USE IN DIAGNOSTIC PROCEDURES"

## Our Abpromise to you: Quality guaranteed and expert technical support

- Replacement or refund for products not performing as stated on the datasheet
- Valid for 12 months from date of delivery

- Response to your inquiry within 24 hours
- We provide support in Chinese, English, French, German, Japanese and Spanish
- Extensive multi-media technical resources to help you
- We investigate all quality concerns to ensure our products perform to the highest standards

If the product does not perform as described on this datasheet, we will offer a refund or replacement. For full details of the Abpromise, please visit <https://www.abcam.com/abpromise> or contact our technical team.

#### **Terms and conditions**

---

- Guarantee only valid for products bought direct from Abcam or one of our authorized distributors