

Recombinant human FES protein ab196084

2 Images

Description	
Product name	Recombinant human FES protein
Biological activity	Specific activity of 235 pmol/min/µg.
Purity	> 90 % SDS-PAGE. Affinity purified.
Expression system	Baculovirus infected Sf9 cells
Accession	<u>P07332</u>
Protein length	Full length protein
Animal free	No
Nature	Recombinant
Species	Human
Sequence	GFSSSELCSPQGHGVLQQMQEAE LRLL EGMRKWMAQRV KSDREYAGLLHHM SLQDSGGQSRAISPDSPISQSWAEITSQTEGLSRLLRQHA EDLNSGPLSK LSLLIRERQQLRKTYSEQWQQ LQQELTKTHSQDIEKLKSQY RALARDSAQ AKRKYQEASKDKDRDKAKDKYVRSLWKLF AHHNRYVLG VRAAQLHHQH HH QLLLPGLLRSLQDLHEEMACILKEILQEYLEISSLVQDEVVA IHREMAAA AARIQPEAEYQGFLRQYGSAPDVPPCVTFDES LLEE GEPL EPGELQLNE LTVESVQH TLTSVTDELAVATE MVFRRQEMVTQLQQELR NEEENTHPRE RVQLLGKRQVLQEALQGLQVALCSQAKLQAQQELLQTKL EHLGPGEPPP V LLLQDDRHSTSSSEQERE GGR TPTLEILKSHISGIFRPKFSLPPLQL IPEVQKPLHEQLWYHGAIPRAEVAELLVHSGDFLVRESQG KQEYVLSVLW DGLPRHFIIQSLDNL YRLEGE GFPSIPLLDHLLSTQQPLTKK SGVVLHR AVPKDKWVLNHEDLVLGEQIGRGNFGEVFSGR LRADNTL VAVKSCRETLP PDLKAKFLQEARILKQYSHPNVRLIGVCTQKQPMVMELV

QGGDFLTF
LRTEGARLRVKTLTLLQMVGDAAAGMEYLESKCCIHRLAA
RNCLVTEKNVL
KISDFGMSREEADGVYAASGGLRQVPVKWTAPEALNYGR
YSSESDVWSFG
ILLWETFSLGASPPNLSNQQTRETFVEKGGRLPCPELCPD
AVFRLMEQCW AYEPGQRPSFSTYQELQSIRKRHR

Predicted molecular weight	95 kDa including tags
Amino acids	2 to 822
Tags	His-DDDDK tag N-Terminus
Additional sequence information	Genbank #: NM_002005

Specifications

Our **Abpromise guarantee** covers the use of **ab196084** in the following tested applications.

The application notes include recommended starting dilutions; optimal dilutions/concentrations should be determined by the end user.

Applications	Functional Studies SDS-PAGE
Form	Liquid

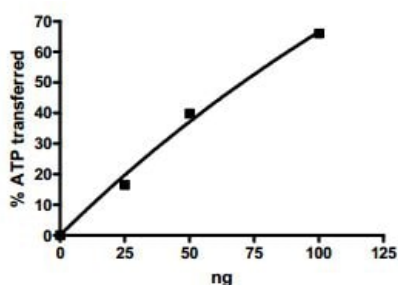
Preparation and Storage

Stability and Storage	Shipped on Dry Ice. Store at -80°C. Avoid freeze / thaw cycle. pH: 7.50 Constituents: 0.64% Tris HCl, 0.64% Sodium chloride, 0.0462% (R*,R*)-1,4-Dimercaptobutan-2,3-diol, 0.017% Potassium chloride, 20% Glycerol (glycerin, glycerine) Buffer also contains FLAG peptide. This product is an active protein and may elicit a biological response in vivo, handle with caution.
------------------------------	--

General Info

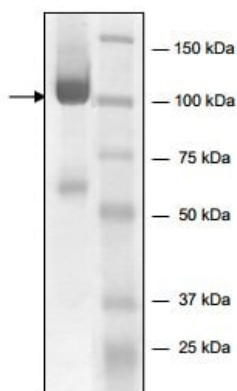
Sequence similarities	Belongs to the protein kinase superfamily. Tyr protein kinase family. Fes/fps subfamily. Contains 1 FCH domain. Contains 1 protein kinase domain. Contains 1 SH2 domain.
------------------------------	---

Images



Functional Studies - Recombinant human FES protein (ab196084)

Analysis of ATP transfer with various amounts of ab196084. Assay was performed in a Kinase buffer (40 mM Tris pH 7.4, 10 mM MgCl₂, 0.1 mg/mL BSA) containing 1 mM DTT using Poly-(Glu4:Tyr)substrate (0.2 mg/mL) and 20 μ M ATP for 30 minutes at 30°C.



SDS-PAGE - Recombinant human FES protein (ab196084)

10% SDS-PAGE analysis of ab196084 stained with Coomassie Blue.

Please note: All products are "FOR RESEARCH USE ONLY. NOT FOR USE IN DIAGNOSTIC PROCEDURES"

Our Abpromise to you: Quality guaranteed and expert technical support

- Replacement or refund for products not performing as stated on the datasheet
- Valid for 12 months from date of delivery
- Response to your inquiry within 24 hours
- We provide support in Chinese, English, French, German, Japanese and Spanish
- Extensive multi-media technical resources to help you
- We investigate all quality concerns to ensure our products perform to the highest standards

If the product does not perform as described on this datasheet, we will offer a refund or replacement. For full details of the Abpromise, please visit <https://www.abcam.com/abpromise> or contact our technical team.

Terms and conditions

- Guarantee only valid for products bought direct from Abcam or one of our authorized distributors