

Product datasheet

Recombinant human FKBP2 protein ab93681

[2 References](#) [1 Image](#)

Description

Product name	Recombinant human FKBP2 protein
Biological activity	Specific activity is > 700nmol/min/mg, and is defined as the amount of enzyme that cleaves 1nmol of suc-AAPF-pNA per minute at 37°C in Tris-HCl pH 8.0 using chymotrypsin.
Purity	> 90 % SDS-PAGE. ab93681 is purified using conventional chromatography techniques.
Expression system	Escherichia coli
Protein length	Full length protein
Animal free	No
Nature	Recombinant
Species	Human
Sequence	MATGAEGKRKRLQIGVKKRVDHCPIKSRKGDVLHMHYTGKL EDGTEFDSSL PQNQPFVFSLGTGQVIKGWDQGLLGMCEGEKRKLVIPSE LGYGERGAPPK IPGGATLVFEVELLKIERRTEL

Specifications

Our **[Abpromise guarantee](#)** covers the use of **ab93681** in the following tested applications.

The application notes include recommended starting dilutions; optimal dilutions/concentrations should be determined by the end user.

Applications	SDS-PAGE Functional Studies
Form	Liquid

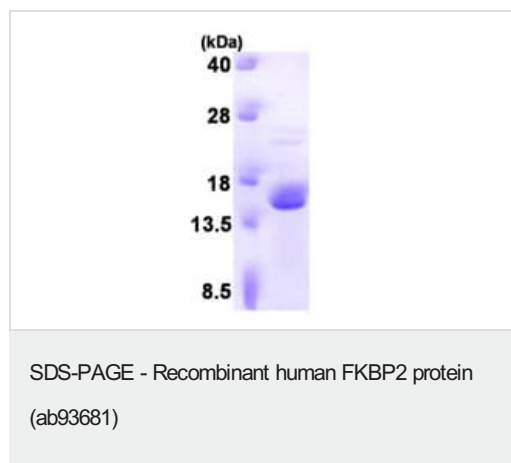
Preparation and Storage

Stability and Storage	Shipped on Dry Ice. Store at -20°C or -80°C. Avoid freeze / thaw cycle. pH: 8.00 Constituents: 0.0154% DTT, 0.242% Tris, 10% Glycerol (glycerin, glycerine) This product is an active protein and may elicit a biological response in vivo, handle with caution.
------------------------------	---

General Info

Function	PPases accelerate the folding of proteins. It catalyzes the cis-trans isomerization of proline imidic peptide bonds in oligopeptides.
Tissue specificity	T-cells and thymus.
Sequence similarities	Belongs to the FKBP-type PPase family. FKBP2 subfamily. Contains 1 PPase FKBP-type domain.
Cellular localization	Endoplasmic reticulum membrane.

Images



15% SDS-PAGE analysis of ab93681 (3µg).

Please note: All products are "FOR RESEARCH USE ONLY. NOT FOR USE IN DIAGNOSTIC PROCEDURES"

Our Abpromise to you: Quality guaranteed and expert technical support

- Replacement or refund for products not performing as stated on the datasheet
- Valid for 12 months from date of delivery
- Response to your inquiry within 24 hours
- We provide support in Chinese, English, French, German, Japanese and Spanish
- Extensive multi-media technical resources to help you
- We investigate all quality concerns to ensure our products perform to the highest standards

If the product does not perform as described on this datasheet, we will offer a refund or replacement. For full details of the Abpromise, please visit <https://www.abcam.com/abpromise> or contact our technical team.

Terms and conditions

- Guarantee only valid for products bought direct from Abcam or one of our authorized distributors