

## Product datasheet

# Recombinant Human FKBP51 protein (His tag) ab206440

[1 Image](#)

### Description

---

<b>Product name</b>	Recombinant Human FKBP51 protein (His tag)
<b>Purity</b>	> 90 % SDS-PAGE.
<b>Endotoxin level</b>	< 1.000 Eu/μg
<b>Expression system</b>	Escherichia coli
<b>Accession</b>	<b><u>Q13451</u></b>
<b>Protein length</b>	Full length protein
<b>Animal free</b>	No
<b>Nature</b>	Recombinant
<b>Species</b>	Human
<b>Sequence</b>	<pre>MKHHHHHHAS MTTDEGAKNN EESPTATVAE QGEDITSKKD RGVLKIVKRV GNGEETPMIG DKVYVHYK GK LSN GKKFDSS HDRNEPFVFS LGKGGVVIKAW DIGVATMKKG EICHLLCKPE YAYGSAGSLP KIPSNATLFF EIELLDFKGE DLFEDGGIIR RTKRKGEGYS NPNEGATVEI HLEGRCGGRM FDCRDVAFTV GEGEDHDIPI GIDKALEKMQ REEQCILYLG PRYGFGEAGK PKFGIEPNAE LYEVTLKSF EKAKESWEMD TKEKLEQAAI VKEKGTVYFK GGKYMQAVIQ YGKIVSWLEM EYGLSEKESK ASESFLAAF LNLAMCYLKL REYTKAVECC DKALGLDSAN EKGLYRRGEA QLLMNEFESA KGD FEKVLEV NPQNKAARLQ ISMCQKKAKE HNERDRRIYA NMFKKFAEQD AKEEANKAMG KKTSEGV TNE KGTDSQAMEE EKPEGHV</pre>
<b>Predicted molecular weight</b>	53 kDa including tags
<b>Amino acids</b>	1 to 457
<b>Tags</b>	His tag N-Terminus

### Specifications

---

Our **Abpromise guarantee** covers the use of **ab206440** in the following tested applications.

The application notes include recommended starting dilutions; optimal dilutions/concentrations should be determined by the end user.

**Applications** Mass Spectrometry

SDS-PAGE

**Mass spectrometry** LC-MS/MS

**Form** Lyophilized

## Preparation and Storage

**Stability and Storage** Shipped at 4°C. Store at +4°C short term (1-2 weeks). Upon delivery aliquot. Store at -20°C or -80°C. Avoid freeze / thaw cycle.

Constituents: 0.29% Sodium chloride, 0.32% Tris buffer

**Reconstitution** Add deionized water to prepare a working stock solution of approximately 0.5 mg/mL and let the lyophilized pellet dissolve completely. Filter sterilize your culture media/working solutions containing this non-sterile product before using in cell culture.

## General Info

**Function** Interacts with functionally mature heterooligomeric progesterone receptor complexes along with HSP90 and TEBP.

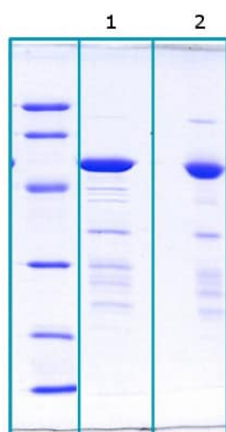
**Tissue specificity** Widely expressed, enriched in testis compared to other tissues.

**Sequence similarities** Contains 2 PPlase FKBP-type domains.  
Contains 3 TPR repeats.

**Post-translational modifications** Phosphorylated upon DNA damage, probably by ATM or ATR.

**Cellular localization** Cytoplasm. Nucleus.

## Images



12 % SDS-PAGE separation of Human FKBP5.

MW Marker: 14, 21, 31, 45, 66, 97 kDa

Lane 1: Reduced and boiled sample, 2.5 µg/lane

Lane 2: Non-reduced and non-boiled sample, 2.5 µg/lane

SDS-PAGE - Recombinant Human FKBP51 protein  
(His tag) (ab206440)

**Please note:** All products are "FOR RESEARCH USE ONLY. NOT FOR USE IN DIAGNOSTIC PROCEDURES"

### **Our Abpromise to you: Quality guaranteed and expert technical support**

---

- Replacement or refund for products not performing as stated on the datasheet
- Valid for 12 months from date of delivery
- Response to your inquiry within 24 hours
- We provide support in Chinese, English, French, German, Japanese and Spanish
- Extensive multi-media technical resources to help you
- We investigate all quality concerns to ensure our products perform to the highest standards

If the product does not perform as described on this datasheet, we will offer a refund or replacement. For full details of the Abpromise, please visit <https://www.abcam.com/abpromise> or contact our technical team.

### **Terms and conditions**

---

- Guarantee only valid for products bought direct from Abcam or one of our authorized distributors