

## Product datasheet

# Recombinant Human Flotillin 1 protein ab153058

1 Image

### Description

---

<b>Product name</b>	Recombinant Human Flotillin 1 protein
<b>Expression system</b>	Wheat germ
<b>Protein length</b>	Full length protein
<b>Animal free</b>	No
<b>Nature</b>	Recombinant
<b>Species</b>	Human
<b>Sequence</b>	<pre>MFFTCGPNEAMVVSGFCRSPPVMVAGGRVFLVLPCLQQIQ RISLNTLTLNV KSEKVYTRHGVPISVTGIAQVKIQGQNKEMLAACQMFLG KTEAEIAHIA LETLEGHQRAIMAHMTVEEIKDRQKFSEQVFKVASSDLV NMGISVVSYT LKDIHDDQDYLHSLGKARTAQVQKDARIGEAEAKRDAGIR EAKAKQEKVS AQYLSEIEMAKAQRDYELKKAAYDIEVNTRRAQADLAYQL QVAKTKQQIE EQRVQVQVVERAQQVAVQEQEIARREKELEARVRKPAE AERYKLERLAEA EKSQIMQAEAEAAASVRMRGEAEFAIGARARAEAEQMA KKAEAFQLYQE AAQLDMLLEKLPQVAEEISGPLTSANKITLVSSGSGTMGA AKVTGEVLDILTRLPEVERLTGVSISQVNHKPLRTA</pre>
<b>Amino acids</b>	1 to 427
<b>Tags</b>	GST tag N-Terminus

### Specifications

---

Our **Abpromise guarantee** covers the use of **ab153058** in the following tested applications.

The application notes include recommended starting dilutions; optimal dilutions/concentrations should be determined by the end user.

<b>Applications</b>	Western blot ELISA
<b>Form</b>	Liquid

## Additional notes

## Preparation and Storage

### Stability and Storage

Shipped on dry ice. Upon delivery aliquot and store at -80°C. Avoid freeze / thaw cycles.

pH: 8.00

Constituents: 0.31% Glutathione, 0.79% Tris HCl

## General Info

### Function

May act as a scaffolding protein within caveolar membranes, functionally participating in formation of caveolae or caveolae-like vesicles.

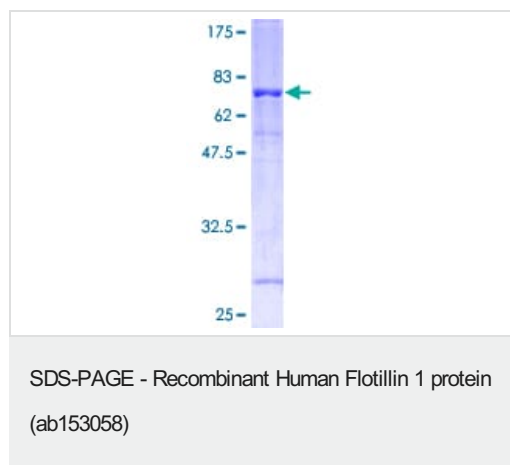
### Sequence similarities

Belongs to the band 7/mec-2 family. Flotillin subfamily.

### Cellular localization

Cell membrane. Membrane > caveola. Melanosome. Endosome. Membrane-associated protein of caveolae. Identified by mass spectrometry in melanosome fractions from stage I to stage IV.

## Images



ab153058 on a 12.5% SDS-PAGE stained with Coomassie Blue.

**Please note:** All products are "FOR RESEARCH USE ONLY. NOT FOR USE IN DIAGNOSTIC PROCEDURES"

## Our Abpromise to you: Quality guaranteed and expert technical support

- Replacement or refund for products not performing as stated on the datasheet
- Valid for 12 months from date of delivery
- Response to your inquiry within 24 hours
- We provide support in Chinese, English, French, German, Japanese and Spanish
- Extensive multi-media technical resources to help you
- We investigate all quality concerns to ensure our products perform to the highest standards

If the product does not perform as described on this datasheet, we will offer a refund or replacement. For full details of the Abpromise,

please visit <https://www.abcam.com/abpromise> or contact our technical team.

## **Terms and conditions**

---

- Guarantee only valid for products bought direct from Abcam or one of our authorized distributors