

Product datasheet

Recombinant human Flt3 / CD135 protein (L610_E611insCSSDNEYFYVDFREYEYDLKWEF-PRENL) (Active) ab268586

[2 Images](#)

Description

Product name	Recombinant human Flt3 / CD135 protein (L610_E611insCSSDNEYFYVDFREYEYDLKWEF-PRENL) (Active)
Biological activity	The specific activity of FLT3-ITD-NPOS was determined to be 12 nmol/min/mg in a kinase assay using MBP substrate.
Purity	> 70 % SDS-PAGE. Affinity purified.
Expression system	Baculovirus infected Sf9 cells
Accession	<u>P36888</u>
Protein length	Protein fragment
Animal free	No
Nature	Recombinant
Species	Human
Molecular weight information	SDS-PAGE molecular weight: ~82kDa
Amino acids	571 to 993
Tags	GST tag N-Terminus
Additional sequence information	The Flt3 / CD135 mutant has 28 aa CSSDNEYFYVDFREYEYDLKWEF-PRENL insertion between 610aa and 611aa. GenBank: NM_004119
Description	Recombinant human Flt3 / CD135 protein (Active)

Specifications

Our **Abpromise guarantee** covers the use of **ab268586** in the following tested applications.

The application notes include recommended starting dilutions; optimal dilutions/concentrations should be determined by the end user.

Applications	Functional Studies SDS-PAGE
Form	Liquid

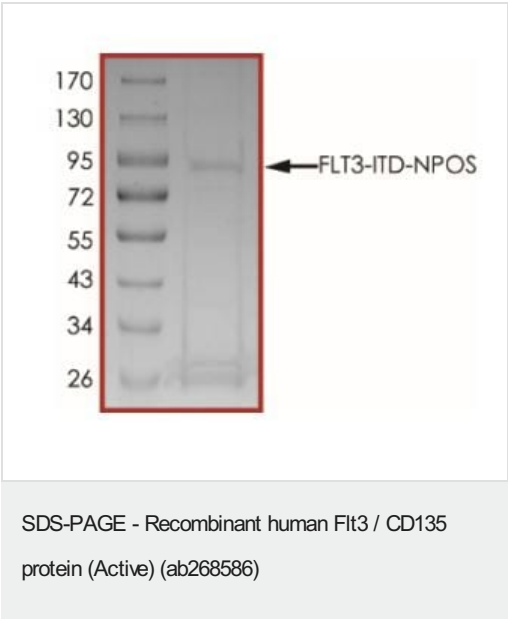
Preparation and Storage

Stability and Storage	Shipped on Dry Ice. Upon delivery aliquot. Store at -80°C. Avoid freeze / thaw cycle. pH: 7.50 Constituents: 0.79% Tris HCl, 0.87% Sodium chloride, 0.31% Glutathione, 0.003% EDTA, 0.004% DTT, 0.002% PMSF, 25% Glycerol (glycerin, glycerine) This product is an active protein and may elicit a biological response in vivo, handle with caution.
-----------------------	---

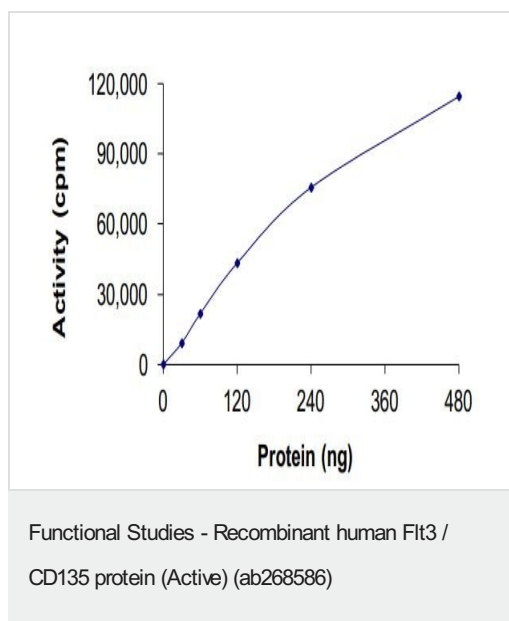
General Info

Function	Receptor for the FL cytokine. Has a tyrosine-protein kinase activity.
Tissue specificity	Bone marrow cells.
Sequence similarities	Belongs to the protein kinase superfamily. Tyr protein kinase family. CSF-1/PDGF receptor subfamily. Contains 1 Ig-like C2-type (immunoglobulin-like) domain. Contains 1 protein kinase domain.
Cellular localization	Membrane.

Images



SDS-PAGE analysis of ab268586.



The specific activity of Flt3 / CD135 was determined to be 12 nmol/min/mg in a kinase assay using MBP substrate.

Please note: All products are "FOR RESEARCH USE ONLY. NOT FOR USE IN DIAGNOSTIC PROCEDURES"

Our Abpromise to you: Quality guaranteed and expert technical support

- Replacement or refund for products not performing as stated on the datasheet
- Valid for 12 months from date of delivery
- Response to your inquiry within 24 hours
- We provide support in Chinese, English, French, German, Japanese and Spanish
- Extensive multi-media technical resources to help you
- We investigate all quality concerns to ensure our products perform to the highest standards

If the product does not perform as described on this datasheet, we will offer a refund or replacement. For full details of the Abpromise, please visit <https://www.abcam.com/abpromise> or contact our technical team.

Terms and conditions

- Guarantee only valid for products bought direct from Abcam or one of our authorized distributors