

Product datasheet

Recombinant Human FRS2 protein ab132038

[1 Image](#)

Description

Product name	Recombinant Human FRS2 protein
Expression system	Wheat germ
Accession	<u>Q8WU20</u>
Protein length	Full length protein
Animal free	No
Nature	Recombinant
Species	Human
Sequence	MGSCCSCPDKDTPDNHRNKFKVIN/DDDGNELGSGIME LTDTELILYTR KRDSVKWHYLCLRRYGYSNLF SFESGRRRCQTGGIFAF KCARAEELFNM LQEIMQNNSINVVEEPVVERNHHQTELEVPRTPRPTTPG FAAQNL PNGY PRYP SFGDASSHPSSRHPSVGSARLPSVGEESTHPLLVA EEQVHTYVNTT GVQEERKNRTSVHVPLEARVSNAESSTPKEEPSSIEDRD PQILLEPEGVK FVLGPTPVQKQLMEKEKLEQLGRDQVSGSGANTEWDT GYDSDERRDAPS VNKLVYENINGLSIPSASGVRRGRLTSTSTSDTQINNSAQ RRTALLNYE NLPSLPPVWEARKLSRDEDDNLGPKTPSLNGYHNNLDPM HNYVNTENVTV PASAHKIEYSRRRDCTPTVFNFDIRRPSLEHRQLNYQVDL EGGSDSDNP QTPKTPPTPLPQTPTRRELYAVIDIERTAAMSNLQKALPR DDGTSRKTR HNSTDLPMLAWK
Predicted molecular weight	83 kDa including tags
Amino acids	1 to 512
Tags	GST tag N-Terminus

Specifications

Our **Abpromise guarantee** covers the use of **ab132038** in the following tested applications.

The application notes include recommended starting dilutions; optimal dilutions/concentrations should be determined by the end user.

Applications	Western blot SDS-PAGE ELISA
Form	Liquid

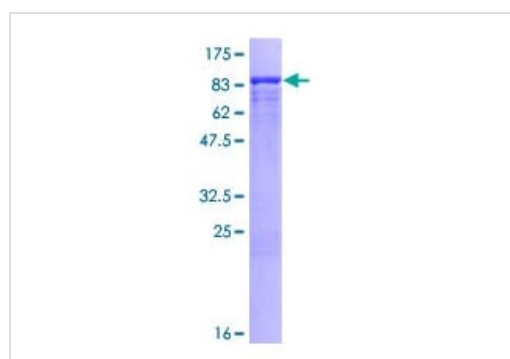
Preparation and Storage

Stability and Storage	Shipped on dry ice. Upon delivery aliquot and store at -80°C. Avoid freeze / thaw cycles. pH: 8.00 Constituents: 0.31% Glutathione, 0.79% Tris HCl
------------------------------	--

General Info

Function	Adapter protein that links FGR and NGF receptors to downstream signaling pathways. Involved in the activation of MAP kinases. Modulates signaling via SHC1 by competing for a common binding site on NTRK1.
Tissue specificity	Highly expressed in heart, brain, spleen, lung, liver, skeletal muscle, kidney and testis.
Sequence similarities	Contains 1 IRS-type PTB domain.
Post-translational modifications	Phosphorylated on tyrosine residues upon stimulation by NGF. Ubiquitinated when tyrosine phosphorylated and in a complex with GRB2. The unphosphorylated form is not subject to ubiquitination.
Cellular localization	Endomembrane system. Cytoplasmic, membrane-bound.

Images



12.5% SDS-PAGE showing ab132038 at approximately 82.72 kDa.
Stained with Coomassie Blue.

SDS-PAGE - Recombinant Human FRS2 protein
(ab132038)

Please note: All products are "FOR RESEARCH USE ONLY. NOT FOR USE IN DIAGNOSTIC PROCEDURES"

Our Abpromise to you: Quality guaranteed and expert technical support

- Replacement or refund for products not performing as stated on the datasheet
- Valid for 12 months from date of delivery
- Response to your inquiry within 24 hours

- We provide support in Chinese, English, French, German, Japanese and Spanish
- Extensive multi-media technical resources to help you
- We investigate all quality concerns to ensure our products perform to the highest standards

If the product does not perform as described on this datasheet, we will offer a refund or replacement. For full details of the Abpromise, please visit <https://www.abcam.com/abpromise> or contact our technical team.

Terms and conditions

- Guarantee only valid for products bought direct from Abcam or one of our authorized distributors