

Product datasheet

Recombinant human Galectin 1 protein (Active) ab243279

[1 Image](#)

Description

Product name	Recombinant human Galectin 1 protein (Active)
Biological activity	Fully biologically active when compared to standard. The biological activity determined by a chemotaxis bioassay using human blood monocytes is in a concentration range of 1.0-10 ng/ml.
Purity	> 95 % SDS-PAGE. >95% as determined by HPLC.
Endotoxin level	< 1.000 Eu/μg
Expression system	Escherichia coli
Accession	<u>P09382</u>
Protein length	Full length protein
Animal free	No
Nature	Recombinant
Species	Human
Sequence	ACGLVASNLNLKPGECLRVRGEVAPDAKSFVLNLGKDSN NLCLHFNPRFN AHGDANTIVCNSKDGGAWGTEQREAVFPFQPGSVAEVC TFDQANLTVKL PDGYEFKFPNRLNLEAINYMAADGDFKIKCVAFD
Predicted molecular weight	15 kDa
Amino acids	2 to 135

Specifications

Our **Abpromise guarantee** covers the use of **ab243279** in the following tested applications.

The application notes include recommended starting dilutions; optimal dilutions/concentrations should be determined by the end user.

Applications	Functional Studies HPLC SDS-PAGE
Form	Lyophilized

Preparation and Storage

Stability and Storage

Shipped at 4°C. Store at -20°C or -80°C. Avoid freeze / thaw cycle.

pH: 7.00

Constituents: 0.14% PBS, 0.02% 2-Mercaptoethanol, 5% Trehalose, 0.02% Tween

0.2 µm filtered

This product is an active protein and may elicit a biological response in vivo, handle with caution.

Reconstitution

We recommend that this vial be briefly centrifuged prior to opening to bring the contents to the bottom. Reconstitute in sterile distilled water or aqueous buffer containing 0.1% BSA to a concentration of 0.1-1.0 mg/mL. Stock solutions should be apportioned into working aliquots and stored at -20degC. Further dilutions should be made in appropriate buffered solutions.

General Info

Function

May regulate apoptosis, cell proliferation and cell differentiation. Binds beta-galactoside and a wide array of complex carbohydrates. Inhibits CD45 protein phosphatase activity and therefore the dephosphorylation of Lyn kinase.

Tissue specificity

Expressed in placenta, maternal decidua and fetal membranes. Within placenta, expressed in trophoblasts, stromal cells, villous endothelium, syncytiotrophoblast apical membrane and villous stroma. Within fetal membranes, expressed in amnion, chorioamniotic mesenchyma and chorion (at protein level). Expressed in cardiac, smooth, and skeletal muscle, neurons, thymus, kidney and hematopoietic cells.

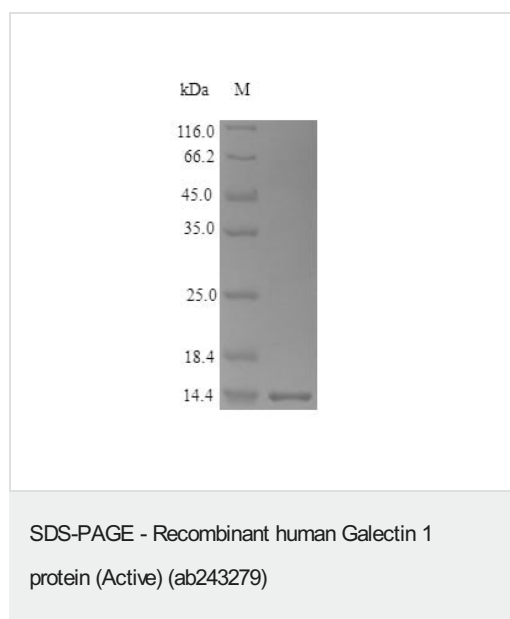
Sequence similarities

Contains 1 galectin domain.

Cellular localization

Secreted > extracellular space > extracellular matrix.

Images



SDS Page analysis of Galectin 1 with ab243279.

Please note: All products are "FOR RESEARCH USE ONLY. NOT FOR USE IN DIAGNOSTIC PROCEDURES"

Our Abpromise to you: Quality guaranteed and expert technical support

- Replacement or refund for products not performing as stated on the datasheet
- Valid for 12 months from date of delivery
- Response to your inquiry within 24 hours

- We provide support in Chinese, English, French, German, Japanese and Spanish
- Extensive multi-media technical resources to help you
- We investigate all quality concerns to ensure our products perform to the highest standards

If the product does not perform as described on this datasheet, we will offer a refund or replacement. For full details of the Abpromise, please visit <https://www.abcam.com/abpromise> or contact our technical team.

Terms and conditions

- Guarantee only valid for products bought direct from Abcam or one of our authorized distributors