

Product datasheet

Recombinant Human gamma Actin protein ab157841

2 Images

Description

Product name	Recombinant Human gamma Actin protein
Expression system	Wheat germ
Protein length	Full length protein
Animal free	No
Nature	Recombinant
Species	Human
Sequence	MEEEI AALVIDNGSGMCKAGFAGDDAPRAVFPSIVGRPRH QGVMVGMGQK DSYVGDEAQS KRGILTLKYPIEHGVTNWDDMEKIWHHTFY NELRVAPEE HPVLLTEAPLNPKANREKMTQIMFETFNTPAMYVAIQAVLS LYASGRITG VMDSGDGVTHTVPIYEGYALPHAILRLDLAGRDLTDYLMKI LTERGYSF TTAEREMRDIKEKLCYVALDFEQEMATAASSSSLEKSYE LPDGQVITI GNERFRCPEALFQPSFLGMESCGIHETTFFNSIMKCDVDIR KDLYANTVLS GGTMYPGIADRMQKEITALAPSTMKIKIAPPERKYSVWIG GSILASLS TFQQMWISKQEYDESGPSVHRKCF
Amino acids	1 to 375
Tags	GST tag N-Terminus

Specifications

Our **Abpromise guarantee** covers the use of **ab157841** in the following tested applications.

The application notes include recommended starting dilutions; optimal dilutions/concentrations should be determined by the end user.

Applications	Western blot ELISA
Form	Liquid

Additional notes

Preparation and Storage

Stability and Storage

Shipped on dry ice. Upon delivery aliquot and store at -80°C. Avoid freeze / thaw cycles.

pH: 8.00

Constituents: 0.31% Glutathione, 0.79% Tris HCl

General Info

Function

Actins are highly conserved proteins that are involved in various types of cell motility and are ubiquitously expressed in all eukaryotic cells.

Involvement in disease

Defects in ACTG1 are the cause of deafness autosomal dominant type 20 (DFNA20) [MIM:604717]; also called autosomal dominant deafness type 26 (DFNA26). DFNA20 is a form of sensorineural hearing loss. Sensorineural deafness results from damage to the neural receptors of the inner ear, the nerve pathways to the brain, or the area of the brain that receives sound information.

Sequence similarities

Belongs to the actin family.

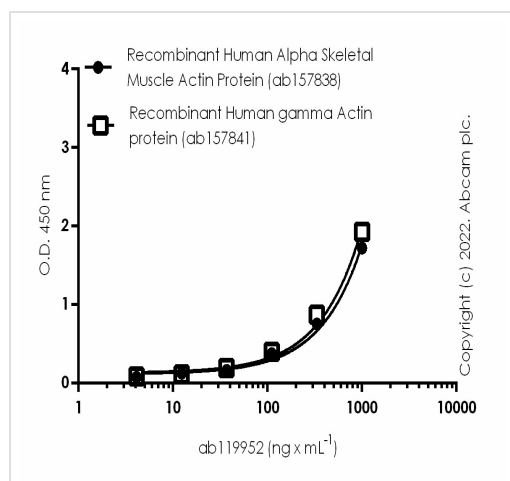
Post-translational modifications

The methylhistidine determined by Bienvenut et al is assumed to be the tele-methylhistidine isomer by similarity to the mouse ortholog.

Cellular localization

Cytoplasm > cytoskeleton.

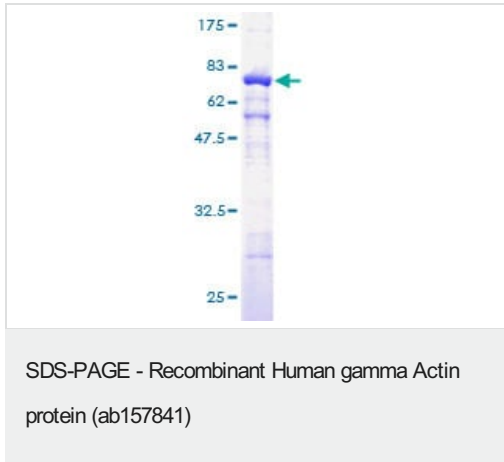
Images



ELISA - Recombinant Human gamma Actin protein (ab157841)

1 ug per mL of recombinant protein **ab157838** and **ab157841** were immobilised in PBS on an ELISA plate overnight. After blocking in 5% BSA, primary antibody (**ab119952**) was added in a concentration range of 0.017-1000 ng per mL.

Pre-absorbed secondary antibody goat anti-rabbit IgG H&L (HRP, **ab97080**) was used at 1/20000 dilution.



ab157841 on a 12.5% SDS-PAGE stained with Coomassie Blue.

Please note: All products are "FOR RESEARCH USE ONLY. NOT FOR USE IN DIAGNOSTIC PROCEDURES"

Our Abpromise to you: Quality guaranteed and expert technical support

- Replacement or refund for products not performing as stated on the datasheet
- Valid for 12 months from date of delivery
- Response to your inquiry within 24 hours
- We provide support in Chinese, English, French, German, Japanese and Spanish
- Extensive multi-media technical resources to help you
- We investigate all quality concerns to ensure our products perform to the highest standards

If the product does not perform as described on this datasheet, we will offer a refund or replacement. For full details of the Abpromise, please visit <https://www.abcam.com/abpromise> or contact our technical team.

Terms and conditions

- Guarantee only valid for products bought direct from Abcam or one of our authorized distributors