

# Recombinant Human gamma Catenin protein

## ab114407

1 Image

Description	
Product name	Recombinant Human gamma Catenin protein
Expression system	Wheat germ
Accession	<u>Q15151</u>
Protein length	Full length protein
Animal free	No
Nature	Recombinant
Species	Human
Sequence	MEVMNLMEQPIKVTEWQQTYTYDSGIHSGANTCVPSVSS KGIMEEDEACG RQYTLKKTTTYTQGVPPSQGDLEYQMSTTARAKRVREAM CPGVSGEDSSL LLATQVEGQATNLQRLAEPSQLLKSAIVHLINYQDDAELAT RALPELTKL LNDEDPVVVTKAAMMVNQLSKKEASRRALMGSPQLVAAV VRTMQNTSDLD TARCTTSILHNLSHHREGLLAIFKSGGIPALVRMLSSPVESV LFYAITTL HNLLLYQEGAKMAVRLADGLQKMVPLLNNPKFLAITTD CLQLLAYGNQ ESKLII LANGGPQALVQIMRNYSYEKLLWTTSRVLKVLSVC PSNKPAME AGGMQALGKHLTSNSPRLVQNCLWTLRNLSDVATKQEGL ESVLKILVNQL SVDDVNVLT CATGTLSNLT CNNSKNKTLVTQNSGVEALIH AILRAGDKDD ITEPAVCALRHLSRHPAEMAQNSVRLNYGIPAMKLLNQ PNQWPLVKA TIGLIRNLALCPANHAPLQEA AVIPRLVQLLVKAHQDAQRH VAAGTQQPY TDGVRMEEIVEGCTGALHILARDPMNRMEIFRLNTIPLFVQ PLYSSVENI QRVAAGALCELAQDKEAADAIDAEGASAPLMELLHSRNE GTATYAAAVLF

RISEDKNPDYRKRVSVELTNSLFKHDPAAWEAAQSMIPIN  
EPYGDDL DAT  
YRPMYSSDVPLDPLEMHMDMDGDYPIDTYS DGLRPPYPT  
ADHMLA

**Predicted molecular weight** 108 kDa including tags  
**Amino acids** 1 to 745

## Specifications

Our **Abpromise guarantee** covers the use of **ab114407** in the following tested applications.

The application notes include recommended starting dilutions; optimal dilutions/concentrations should be determined by the end user.

**Applications** SDS-PAGE  
Western blot  
ELISA

**Form** Liquid

**Additional notes**

## Preparation and Storage

**Stability and Storage** Shipped on dry ice. Upon delivery aliquot and store at -80°C. Avoid freeze / thaw cycles.  
pH: 8.00  
Constituents: 0.3% Glutathione, 0.79% Tris HCl

## General Info

**Function** Common junctional plaque protein. The membrane-associated plaques are architectural elements in an important strategic position to influence the arrangement and function of both the cytoskeleton and the cells within the tissue. The presence of plakoglobin in both the desmosomes and in the intermediate junctions suggests that it plays a central role in the structure and function of submembranous plaques. Acts as a substrate for VE-PTP and is required by it to stimulate VE-cadherin function in endothelial cells. Can replace beta-catenin in E-cadherin/catenin adhesion complexes which are proposed to couple cadherins to the actin cytoskeleton.

**Involvement in disease** Defects in JUP are the cause of Naxos disease (NXD) [MIM:601214]. NXD is an autosomal recessive disorder combining diffuse non-epidermolytic palmoplantar keratoderma with arrhythmogenic right ventricular dysplasia/cardiomyopathy and woolly hair.  
Defects in JUP are the cause of familial arrhythmogenic right ventricular dysplasia type 12 (ARVD12) [MIM:611528]; also called arrhythmogenic right ventricular cardiomyopathy 12 (ARVC12). ARVD is an autosomal dominant disease characterized by partial degeneration of the myocardium of the right ventricle, electrical instability, and sudden death. It is clinically defined by electrocardiographic and angiographic criteria; pathologic findings, replacement of ventricular myocardium with fatty and fibrous elements, preferentially involve the right ventricular free wall.

**Sequence similarities** Belongs to the beta-catenin family.  
Contains 9 ARM repeats.

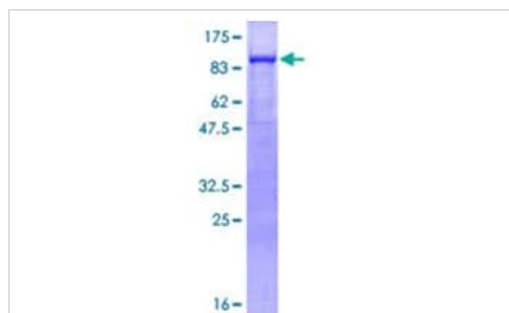
**Cellular localization** Cell junction > adherens junction. Cell junction > desmosome. Cytoplasm > cytoskeleton.

Membrane. Cytoplasmic in a soluble and membrane-associated form.

---

## Images

---



12.5% SDS-PAGE analysis of ab114407, stained with Coomassie Blue.

SDS-PAGE - Recombinant Human gamma Catenin protein (ab114407)

**Please note:** All products are "FOR RESEARCH USE ONLY. NOT FOR USE IN DIAGNOSTIC PROCEDURES"

## Our Abpromise to you: Quality guaranteed and expert technical support

---

- Replacement or refund for products not performing as stated on the datasheet
- Valid for 12 months from date of delivery
- Response to your inquiry within 24 hours
- We provide support in Chinese, English, French, German, Japanese and Spanish
- Extensive multi-media technical resources to help you
- We investigate all quality concerns to ensure our products perform to the highest standards

If the product does not perform as described on this datasheet, we will offer a refund or replacement. For full details of the Abpromise, please visit <https://www.abcam.com/abpromise> or contact our technical team.

## Terms and conditions

---

- Guarantee only valid for products bought direct from Abcam or one of our authorized distributors