

Product datasheet

Recombinant Human gamma Synuclein/SNCG protein ab48712

[3 References](#) [2 Images](#)

Description

Product name	Recombinant Human gamma Synuclein/SNCG protein
Purity	> 95 % SDS-PAGE. The protein coding region of β -Synuclein was amplified by RT-PCR and cloned into an E.coli expression vector. β -Synuclein was overexpressed in E. coli and purified to apparent homogeneity by taking advantage of the thermosolubility of the protein and by using conventional column chromatography techniques.
Expression system	Escherichia coli
Protein length	Full length protein
Animal free	No
Nature	Recombinant
Species	Human
Sequence	MDVFKKGFSI AKEGVVGAVE KTKQGVTEAA EKTKEGVMYV GAKTKENVVQ SVTSVAEKT EQANAVSEAV VSSVNTVATK TVEEAENIAV TSGVVRKEDL RPSAPQQEGV ASKEKEEVAE EAQSGGD
Amino acids	1 to 127

Specifications

Our **Abpromise guarantee** covers the use of **ab48712** in the following tested applications.

The application notes include recommended starting dilutions; optimal dilutions/concentrations should be determined by the end user.

Applications	Western blot SDS-PAGE
Form	Liquid

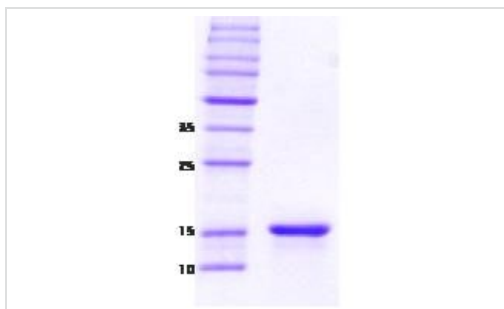
Preparation and Storage

Stability and Storage	Shipped at 4°C. Upon delivery aliquot and store at -20°C. Avoid freeze / thaw cycles. pH: 7.50 Constituents: 0.316% Tris HCl, 0.58% Sodium chloride
------------------------------	---

General Info

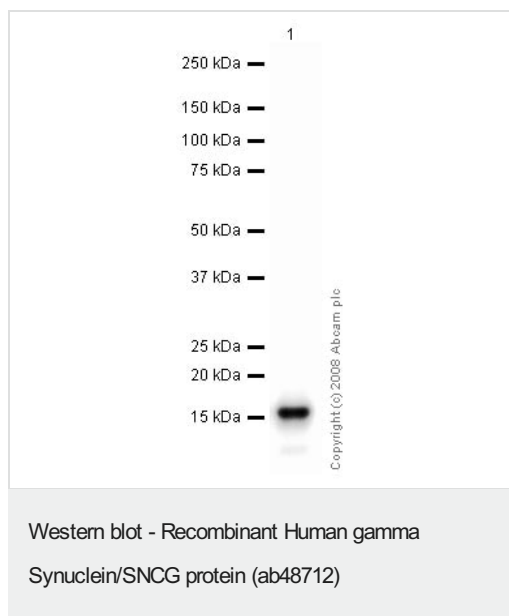
Function	Plays a role in neurofilament network integrity. May be involved in modulating axonal architecture during development and in the adult. In vitro, increases the susceptibility of neurofilament-H to calcium-dependent proteases (By similarity). May also function in modulating the keratin network in skin. Activates the MAPK and Elk-1 signal transduction pathway.
Tissue specificity	Highly expressed in brain, particularly in the substantia nigra. Also expressed in the corpus callosum, heart, skeletal muscle, ovary, testis, colon and spleen. Weak expression in pancreas, kidney and lung.
Sequence similarities	Belongs to the synuclein family.
Post-translational modifications	Phosphorylated. Phosphorylation by GRK5 appears to occur on residues distinct from the residue phosphorylated by other kinases.
Cellular localization	Cytoplasm > perinuclear region. Cytoplasm > cytoskeleton > centrosome. Cytoplasm > cytoskeleton > spindle. Associated with centrosomes in several interphase cells. In mitotic cells, localized to the poles of the spindle.

Images



15% SDS-PAGE gel loaded with recombinant gamma Synuclein/SNCG protein.

SDS-PAGE - Recombinant Human gamma
Synuclein/SNCG protein (ab48712)



Anti-gamma Synuclein/SNCG antibody (**ab46201**) at 0.5 µg/ml +
Recombinant Human gamma Synuclein/SNCG protein (ab48712)
at 0.05 µg

Secondary

Goat polyclonal to rabbit IgG - H&L - Pre adsorbed (HRP) at 1/3000
dilution

Performed under reducing conditions.

Predicted band size: 13 kDa

Please note: All products are "FOR RESEARCH USE ONLY. NOT FOR USE IN DIAGNOSTIC PROCEDURES"

Our Abpromise to you: Quality guaranteed and expert technical support

- Replacement or refund for products not performing as stated on the datasheet
- Valid for 12 months from date of delivery
- Response to your inquiry within 24 hours
- We provide support in Chinese, English, French, German, Japanese and Spanish
- Extensive multi-media technical resources to help you
- We investigate all quality concerns to ensure our products perform to the highest standards

If the product does not perform as described on this datasheet, we will offer a refund or replacement. For full details of the Abpromise, please visit <https://www.abcam.com/abpromise> or contact our technical team.

Terms and conditions

- Guarantee only valid for products bought direct from Abcam or one of our authorized distributors