

Product datasheet

Recombinant Human Gastrin protein ab131754

1 Image

Description

Product name	Recombinant Human Gastrin protein
Expression system	Wheat germ
Accession	<u>P01350</u>
Protein length	Full length protein
Animal free	No
Nature	Recombinant
Species	Human
Sequence	MQRLCVYVLI FALALAAFSEASWKPRSQQPDAPLGTGAN RDLELPWLEQQ GPASHHRRQLGPQGPPHLVADPSKKQGPWLEEEEEAYG WMDFGRRSAEDE N
Predicted molecular weight	38 kDa including tags
Amino acids	1 to 101
Tags	GST tag N-Terminus

Specifications

Our **Abpromise guarantee** covers the use of **ab131754** in the following tested applications.

The application notes include recommended starting dilutions; optimal dilutions/concentrations should be determined by the end user.

Applications	SDS-PAGE Western blot ELISA
Form	Liquid

Preparation and Storage

Stability and Storage	Shipped on dry ice. Upon delivery aliquot and store at -80°C. Avoid freeze / thaw cycles. pH: 8.00 Constituents: 0.31% Glutathione, 0.79% Tris HCl
------------------------------	--

General Info

Function

Gastrin stimulates the stomach mucosa to produce and secrete hydrochloric acid and the pancreas to secrete its digestive enzymes. It also stimulates smooth muscle contraction and increases blood circulation and water secretion in the stomach and intestine.

Sequence similarities

Belongs to the gastrin/cholecystokinin family.

Post-translational modifications

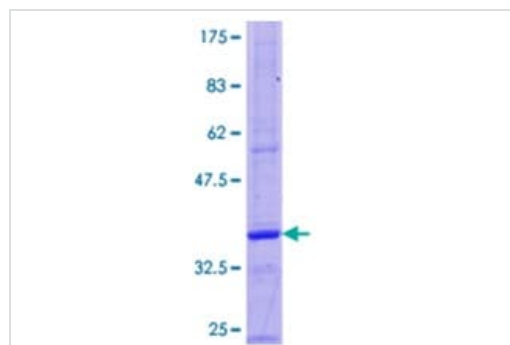
Two different processing pathways probably exist in antral G-cells. In the dominant pathway progastrin is cleaved at three sites resulting in two major bioactive gastrins, gastrin-34 and gastrin-17. In the putative alternative pathway, progastrin may be processed only at the most C-terminal dibasic site resulting in the synthesis of gastrin-71.

Sulfation enhances proteolytic processing, and blocks peptide degradation. Levels of sulfation differ between proteolytically-cleaved gastrins. Thus, gastrin-6 is almost 73% sulfated, whereas the larger gastrins are less than 50% sulfated. Sulfation levels are also tissue-specific.

Cellular localization

Secreted.

Images



12.5% SDS-PAGE analysis of ab131754, stained with Coomassie Blue.

SDS-PAGE - Recombinant Human Gastrin protein
(ab131754)

Please note: All products are "FOR RESEARCH USE ONLY. NOT FOR USE IN DIAGNOSTIC PROCEDURES"

Our Abpromise to you: Quality guaranteed and expert technical support

- Replacement or refund for products not performing as stated on the datasheet
- Valid for 12 months from date of delivery
- Response to your inquiry within 24 hours
- We provide support in Chinese, English, French, German, Japanese and Spanish
- Extensive multi-media technical resources to help you
- We investigate all quality concerns to ensure our products perform to the highest standards

If the product does not perform as described on this datasheet, we will offer a refund or replacement. For full details of the Abpromise, please visit <https://www.abcam.com/abpromise> or contact our technical team.

Terms and conditions

- Guarantee only valid for products bought direct from Abcam or one of our authorized distributors