

Recombinant Human GBP1 protein ab114960

1 Image

Description

Product name	Recombinant Human GBP1 protein
Expression system	Wheat germ
Accession	<u>P32455</u>
Protein length	Full length protein
Animal free	No
Nature	Recombinant
Species	Human
Sequence	MASEIHMTGPMCLIENTNGRLMANPEALKILSAITQPMVVV AIVGLYRTG KSYLMNKLAGKKKGFSLGSTVQSHTKGMMWCVPHPKK PGHILVLLDTEG LGDVEKGDNQNDSWIFALAVLLSSTFVYNSIGTINQQAMD QLYYVTELT HIRSKSSPDENENEVEDSADFVSFFPDFVWTLRDFSLDL EADGQPLTPDE YLTYSCLKKKGTSQKDETFNLPRLCIRKFFPKKKCFVDRP VHRRKLAQL EKLQDEELDPEFVQQVADFCSYIFSNSKTKTLSGGIQVNG PRLESLVLT VNAISSGDLPCMENAVLALAQIENSAAVQKAIHAEQQMG QKVQLPTESL QELLDLHRDSEREAIEVFIRSSFKDVDHLFQKELAAQLEK KRDDFCKQNG EASSDRCSGLLQVIFSPLEEEVKAGIYKPGGYRLFVQKL QDLKKKYEE PRKGIQAEELQTYLKSKESTDAIQTDQTLTEKEKEIEVE RVKAESAQ ASAKMLQEMQRKNEQMMEQKERSYQEHLKQLTEKMEND RVQLLKEQERTL ALKLQEQEQLLKEGFQKESRIMKNEIQDLQTKMRRRKACTI S
Predicted molecular weight	91 kDa including tags
Amino acids	1 to 592

## Specifications

---

Our **Abpromise guarantee** covers the use of **ab114960** in the following tested applications.

The application notes include recommended starting dilutions; optimal dilutions/concentrations should be determined by the end user.

<b>Applications</b>	ELISA
	SDS-PAGE
	Western blot

<b>Form</b>	Liquid
-------------	--------

## Preparation and Storage

---

<b>Stability and Storage</b>	Shipped on dry ice. Upon delivery aliquot and store at -80°C. Avoid freeze / thaw cycles.
	pH: 8.00
	Constituents: 0.3% Glutathione, 0.79% Tris HCl

## General Info

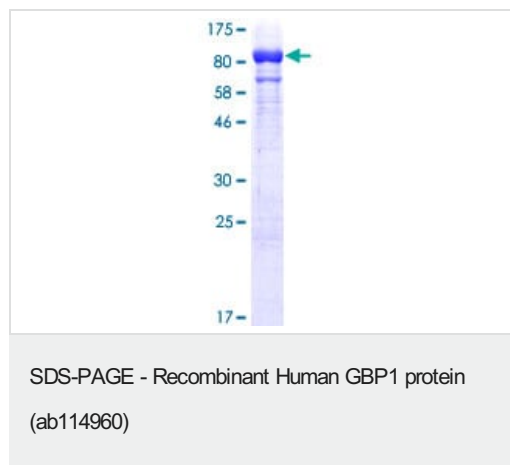
---

<b>Function</b>	Binds GTP, GDP and GMP.
<b>Sequence similarities</b>	Belongs to the GBP family.
<b>Cellular localization</b>	Cell membrane.

---

## Images

---



12.5% SDS-PAGE showing ab114960 at approximately 91.23kDa.  
Stained with Coomassie Blue.

**Please note:** All products are "FOR RESEARCH USE ONLY. NOT FOR USE IN DIAGNOSTIC PROCEDURES"

## Our Abpromise to you: Quality guaranteed and expert technical support

---

- Replacement or refund for products not performing as stated on the datasheet
- Valid for 12 months from date of delivery
- Response to your inquiry within 24 hours

- We provide support in Chinese, English, French, German, Japanese and Spanish
- Extensive multi-media technical resources to help you
- We investigate all quality concerns to ensure our products perform to the highest standards

If the product does not perform as described on this datasheet, we will offer a refund or replacement. For full details of the Abpromise, please visit <https://www.abcam.com/abpromise> or contact our technical team.

#### **Terms and conditions**

---

- Guarantee only valid for products bought direct from Abcam or one of our authorized distributors