

Recombinant Human GCC1 protein ab164034

1 Image

Description

Product name	Recombinant Human GCC1 protein
Expression system	Wheat germ
Protein length	Full length protein
Animal free	No
Nature	Recombinant
Species	Human
Sequence	

MEKFGMNFGGGPSKKDLLETIETQKKQLLQYQARLKDVV
RAYKSLLKEKE
ALEASIKVLSVSHEADVGLAGVQLPGLTFPDSVDDRCST
HSEDSTGTATS
LDTAASLTSTKGEFGVEDDRPARGPPPPKSEEASWSES
GVSSSSSGDGPF
GGEVDKRLHQLKTQLATLTSSLATVTQEKSMEASYLADK
KKMKQDLEDA
SNKAEERARLEGELKGLQEQAETKARLITQQHDRAEQ
SDHALMLREL
QKLLQEERTQRQDLELRLEETREALAGRAYAAEQMEGFE
LQTKQLTREVE
ELKSELQAIRDEKNQPDPRQLQELQEEAARLKSHFQAQLQ
QEMRKTALED
QLRQQSQVEEQRVAALNQISEVSELLGTYEKAKQKDQL
AIQKLKERILQ
LDLENKTLALAASSRSPLDHGEESLDVNVLDKMEKL
KRLLQVAARKS
QVTLDVEKLCDEIMPSSEAADGEKATALYQQELKQLKE
EFERYKMRAQ
VVLKSKNTKDGNLGKELEAAQEQLAELKEKYISLRLSCEE
LEHQHQEAD
DWKQELARLQQLHRQELERCQLDFRDRTLKLEELHKQR
DRALAVLTEKD
LELEQLRSVALASGLPGRRSPVGGGGPGDPADTSSSDS
LTQALQLAAANE
PTFFLYAEQLARKEVEITSLRKQKHRLEVEVHQLQDRLL
EGERHREEVA
ALQSHIEKNIRDQSREGANLEYLKNIIYRFLTPDSLGRQQT

Amino acids	1 to 775
Tags	GST tag N-Terminus

Specifications

Our **Abpromise guarantee** covers the use of **ab164034** in the following tested applications.

The application notes include recommended starting dilutions; optimal dilutions/concentrations should be determined by the end user.

Applications	Western blot
	ELISA
Form	Liquid

Additional notes

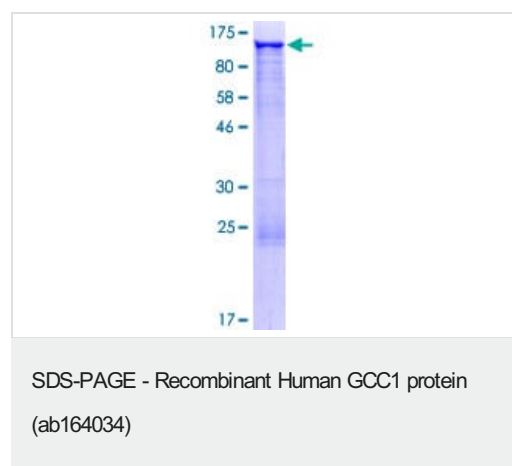
Preparation and Storage

Stability and Storage	Shipped on dry ice. Upon delivery aliquot and store at -80°C. Avoid freeze / thaw cycles. pH: 8.00 Constituents: 0.31% Glutathione, 0.79% Tris HCl
------------------------------	--

General Info

Function	Probably involved in maintaining Golgi structure.
Sequence similarities	Contains 1 GRIP domain.
Domain	Extended rod-like protein with coiled-coil domains.
Cellular localization	Cytoplasm. Golgi apparatus membrane.

Images



ab164034 on a 12.5% SDS-PAGE stained with Coomassie Blue.

Our Abpromise to you: Quality guaranteed and expert technical support

- Replacement or refund for products not performing as stated on the datasheet
- Valid for 12 months from date of delivery
- Response to your inquiry within 24 hours

- We provide support in Chinese, English, French, German, Japanese and Spanish
- Extensive multi-media technical resources to help you
- We investigate all quality concerns to ensure our products perform to the highest standards

If the product does not perform as described on this datasheet, we will offer a refund or replacement. For full details of the Abpromise, please visit <https://www.abcam.com/abpromise> or contact our technical team.

Terms and conditions

- Guarantee only valid for products bought direct from Abcam or one of our authorized distributors