

## Product datasheet

# Recombinant Human GCLC protein ab112293

[1 Image](#)

### Description

---

<b>Product name</b>	Recombinant Human GCLC protein
<b>Biological activity</b>	useful for Antibody Production and Protein Array
<b>Expression system</b>	Wheat germ
<b>Accession</b>	<b><u>P48506</u></b>
<b>Protein length</b>	Full length protein
<b>Animal free</b>	No
<b>Nature</b>	Recombinant
<b>Species</b>	Human
<b>Predicted molecular weight</b>	96 kDa including tags
<b>Amino acids</b>	1 to 637
<b>Tags</b>	GST tag N-Terminus

### Specifications

---

Our **Abpromise guarantee** covers the use of **ab112293** in the following tested applications.

The application notes include recommended starting dilutions; optimal dilutions/concentrations should be determined by the end user.

<b>Applications</b>	SDS-PAGE Western blot ELISA
<b>Form</b>	Liquid
<b>Additional notes</b>	useful for Antibody Production and Protein Array

### Preparation and Storage

---

<b>Stability and Storage</b>	Shipped on dry ice. Upon delivery aliquot and store at -80°C. Avoid freeze / thaw cycles. pH: 8.00 Constituents: 0.31% Glutathione, 0.79% Tris HCl  Glutathione is reduced
------------------------------	--

## General Info

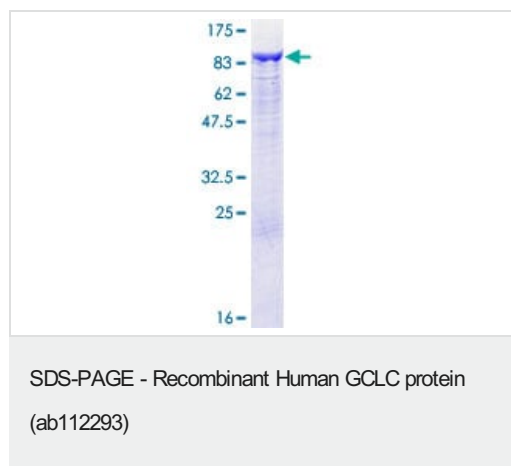
---

<b>Pathway</b>	Sulfur metabolism; glutathione biosynthesis; glutathione from L-cysteine and L-glutamate: step 1/2.
<b>Involvement in disease</b>	Defects in GCLC are the cause of hemolytic anemia (HAGGSD) [MIM:230450].
<b>Sequence similarities</b>	Belongs to the glutamate--cysteine ligase type 3 family.

---

## Images

---



ab112293 analysed on a 12.5% SDS-PAGE stained with Coomassie Blue.

**Please note:** All products are "FOR RESEARCH USE ONLY. NOT FOR USE IN DIAGNOSTIC PROCEDURES"

## Our Abpromise to you: Quality guaranteed and expert technical support

---

- Replacement or refund for products not performing as stated on the datasheet
- Valid for 12 months from date of delivery
- Response to your inquiry within 24 hours
- We provide support in Chinese, English, French, German, Japanese and Spanish
- Extensive multi-media technical resources to help you
- We investigate all quality concerns to ensure our products perform to the highest standards

If the product does not perform as described on this datasheet, we will offer a refund or replacement. For full details of the Abpromise, please visit <https://www.abcam.com/abpromise> or contact our technical team.

## Terms and conditions

---

- Guarantee only valid for products bought direct from Abcam or one of our authorized distributors