

Product datasheet

Recombinant Human GCLM protein ab130054

1 Image

Description	
Product name	Recombinant Human GCLM protein
Purity	> 90 % SDS-PAGE. ab130054 was purified using conventional chromatography techniques.
Expression system	Escherichia coli
Accession	<u>P48507</u>
Protein length	Full length protein
Animal free	No
Nature	Recombinant
Species	Human
Sequence	MGSSHHHHHH SSGLVPRGSH MGSHMGTD SR AAKALLARAR TLHLQTGNLL NWGRLRKKCP STHSEELHDC IQKTLNEWSS QINPDLVREF PDVLECTVSH AVEKINPDER EEMKVS AKLF MESNSSSSST RSAVDMACSV LGVAQLDSVI IASPP IEDGV NLSLEHLQPY WEELENLVQS KKIVAIGTSD LDKTQ LEQLY QWAQVKPNSN QVNLASCCVM PPDLTAF AKQ FDIQLLTHND PKELLSEASF QEALQESIPD QIAHEWVPLW LLRYSVIVKS RGIKSKGYI LQAKRRGS
Predicted molecular weight	33 kDa including tags
Amino acids	1 to 274
Tags	His tag N-Terminus

Specifications	
Our <b>Abpromise guarantee</b> covers the use of <b>ab130054</b> in the following tested applications.	
The application notes include recommended starting dilutions; optimal dilutions/concentrations should be determined by the end user.	
Applications	Mass Spectrometry SDS-PAGE
Mass spectrometry	MALDI-TOF
Form	Liquid

## Preparation and Storage

### Stability and Storage

Shipped at 4°C. Store at +4°C short term (1-2 weeks). Upon delivery aliquot. Store at -20°C or -80°C. Avoid freeze / thaw cycle.

pH: 8.00

Constituents: 0.32% Tris HCl, 10% Glycerol (glycerin, glycerine), 0.88% Sodium chloride

## General Info

### Tissue specificity

In all tissues examined. Highest levels in skeletal muscle.

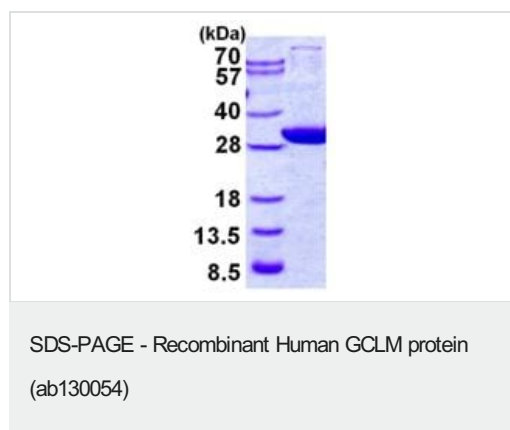
### Pathway

Sulfur metabolism; glutathione biosynthesis; glutathione from L-cysteine and L-glutamate: step 1/2.

### Sequence similarities

Belongs to the aldo/keto reductase family. Glutamate--cysteine ligase light chain subfamily.

## Images



15% SDS-PAGE analysis of 3 µg of Human GCLM protein  
(ab130054)

**Please note:** All products are "FOR RESEARCH USE ONLY. NOT FOR USE IN DIAGNOSTIC PROCEDURES"

## Our Abpromise to you: Quality guaranteed and expert technical support

- Replacement or refund for products not performing as stated on the datasheet
- Valid for 12 months from date of delivery
- Response to your inquiry within 24 hours
- We provide support in Chinese, English, French, German, Japanese and Spanish
- Extensive multi-media technical resources to help you
- We investigate all quality concerns to ensure our products perform to the highest standards

If the product does not perform as described on this datasheet, we will offer a refund or replacement. For full details of the Abpromise, please visit <https://www.abcam.com/abpromise> or contact our technical team.

## Terms and conditions

- Guarantee only valid for products bought direct from Abcam or one of our authorized distributors