

Product datasheet

Recombinant Human GDF 9 protein ab158509

1 Image

Description

| | | |
|--------------------------|--|--|
| Product name | Recombinant Human GDF 9 protein | |
| Expression system | Wheat germ | |
| Accession | <u>O60383</u> | |
| Protein length | Full length protein | |
| Animal free | No | |
| Nature | Recombinant | |
| Species | Human | |
| Sequence | <p>MARPNKFLLWFCCFAWLCFPISLGSQASGGEAQIAASAE LESGAMPWSSL QHIDERDRAGLLPALFKVLSVGRGGSPRLQPDSRALHYM KKLYKTYATKE GIPKSNRSHLYNTVRLFTPCTRHKQAPGDQVTGILPSVELL FNLDRITTV EHLLKSVLLYNINNSVSFSSAVKVCNLMIKEPKSSSRTL RAYPSFTFN SQFEFGKKHKWIQIDVTSLLQPLVASNKRSIHMSINF TCMK DQLEHPSAQ NGLFNMTLVSPSLILYLNDTSAQAYHSWYSLHYKRRPSQ G PDQERSLSAY PVGEEAAEDGRSSHRRHRRGQETVSSSELKKPLGPASFN LSEYFRQFLLPQ NECELHDFRLSFSQLKWDNWIAPHRYNPRYCKGDCPRA VGHRYGSPVHT MVQNIYEKLDSSVPRPSCVPAKYSPLSVLTIEPDGSIAYKE YEDMIATK CTR</p> | |
| Amino acids | 1 to 454 | |
| Tags | GST tag N-Terminus | |

Specifications

Our **Abpromise guarantee** covers the use of **ab158509** in the following tested applications.

The application notes include recommended starting dilutions; optimal dilutions/concentrations should be determined by the end user.

Applications ELISA

Western blot

Form Liquid

Additional notes

Preparation and Storage

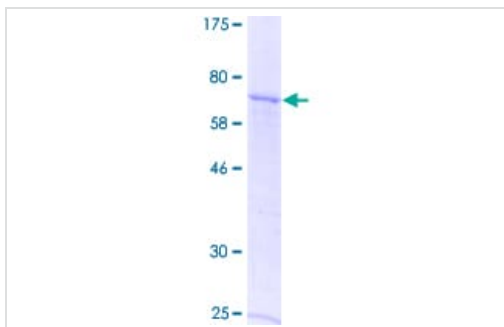
Stability and Storage Shipped on dry ice. Upon delivery aliquot and store at -80°C. Avoid freeze / thaw cycles.
pH: 8.00
Constituents: 0.31% Glutathione, 0.79% Tris HCl

General Info

Relevance GDF 9 is a member of the bone morphogenetic protein (BMP) family and the TGF-beta superfamily. This group of proteins is characterized by a polybasic proteolytic processing site which is cleaved to produce a mature protein containing seven conserved cysteine residues. The members of this family are regulators of cell growth and differentiation in both embryonic and adult tissues. Growth factors synthesized by ovarian somatic cells directly affect oocyte growth and function. GDF 9 is expressed in oocytes and is thought to be required for ovarian folliculogenesis.

Cellular localization Secreted

Images



ab158509 on a 12.5% SDS-PAGE stained with Coomassie Blue.

SDS-PAGE - Recombinant Human GDF 9 protein
(ab158509)

Please note: All products are "FOR RESEARCH USE ONLY. NOT FOR USE IN DIAGNOSTIC PROCEDURES"

Our Abpromise to you: Quality guaranteed and expert technical support

- Replacement or refund for products not performing as stated on the datasheet
- Valid for 12 months from date of delivery
- Response to your inquiry within 24 hours
- We provide support in Chinese, English, French, German, Japanese and Spanish

- Extensive multi-media technical resources to help you
- We investigate all quality concerns to ensure our products perform to the highest standards

If the product does not perform as described on this datasheet, we will offer a refund or replacement. For full details of the Abpromise, please visit <https://www.abcam.com/abpromise> or contact our technical team.

Terms and conditions

- Guarantee only valid for products bought direct from Abcam or one of our authorized distributors