

Recombinant human GDNF Receptor alpha 1/GFRA1 protein ab167761

1 Image

Description

Product name	Recombinant human GDNF Receptor alpha 1/GFRA1 protein		
Biological activity	Measured by its binding ability in a functional ELISA. Immobilized Recombinant Human GDNF at 1 µg/mL binds ab167761 with an apparent KD <10 nM.		
Purity	> 95 % SDS-PAGE. ab167761 is lyophilized from 0.22 µm filtered solution.		
Endotoxin level	< 1.000 Eu/µg		
Expression system	HEK 293 cells		
Accession	<u>P56159-2</u>		
Protein length	Full length protein		
Animal free	No		
Nature	Recombinant		
Species	Human		
Sequence	DRLDCVKASDQCLKEQSCSTKYRTL RQCVAGKETNFSLA SGLEAKDECRS AMEALKQKSLYNCRCKRGMKKEKNCLRIYWSMYQSLQGN DLLEDSPYEPV NSRLSDIFRVVPFISVEHIPKGNNCLDAAKACNLDDICKKY RSAYITPCT TSVSNDVCNRRKCHKALRQFFDKVPAKHSYGMLFCSCR DIACTERRRQTI VPVCSYEEREKPNCLNLQDSCKTNYICRSRLADFFTNQCP ESRSVSSCLK ENYADCLLAYSGLIGTVMTPNYDSSSLSVAPWCDCSNSG NDLEECLKFL NFFKDNTCLKNAIQAFNGSDVTWQPAFPVQTTTATTTT ALRVKNKPLG PAGSENEIPTHVLPPCANLQAQKLKSNVSGNTHLCISNGN YEKEGLGASS HITTK		
Predicted molecular weight	46 kDa including tags		
Amino acids	25 to 429		
Tags	His tag C-Terminus		

Specifications

Our **Abpromise guarantee** covers the use of **ab167761** in the following tested applications.

The application notes include recommended starting dilutions; optimal dilutions/concentrations should be determined by the end user.

Applications

Functional Studies

SDS-PAGE

ELISA

Form

Lyophilized

Additional notes

Measured by its binding ability in a functional ELISA. Immobilized Recombinant Human GDNF at 1 µg/mL binds ab167761 with an apparent KD <10 nM.

This product was previously labelled as GDNF Receptor alpha 1

Preparation and Storage

Stability and Storage

Shipped at 4°C. Store at +4°C short term (1-2 weeks). Upon delivery aliquot. Store at -20°C or -80°C. Avoid freeze / thaw cycle.

pH: 7.40

Constituents: 94% PBS, 5% Trehalose

This product is an active protein and may elicit a biological response in vivo, handle with caution.

Reconstitution

Reconstitute with sterile deionized water to a concentration of 400 µg/ml.

General Info

Function

Receptor for GDNF. Mediates the GDNF-induced autophosphorylation and activation of the RET receptor.

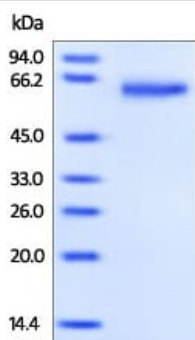
Sequence similarities

Belongs to the GDNFR family.

Cellular localization

Cell membrane.

Images



SDS-PAGE - Recombinant human GDNF Receptor
alpha 1/GFRA1 protein (ab167761)

SDS-PAGE analysis of ab167761 stained overnight with
Coomassie Blue.

Please note: All products are "FOR RESEARCH USE ONLY. NOT FOR USE IN DIAGNOSTIC PROCEDURES"

Our Abpromise to you: Quality guaranteed and expert technical support

- Replacement or refund for products not performing as stated on the datasheet
- Valid for 12 months from date of delivery
- Response to your inquiry within 24 hours

- We provide support in Chinese, English, French, German, Japanese and Spanish
- Extensive multi-media technical resources to help you
- We investigate all quality concerns to ensure our products perform to the highest standards

If the product does not perform as described on this datasheet, we will offer a refund or replacement. For full details of the Abpromise, please visit <https://www.abcam.com/abpromise> or contact our technical team.

Terms and conditions

- Guarantee only valid for products bought direct from Abcam or one of our authorized distributors