

Product datasheet

Recombinant Human GGH protein ab123172

1 Image

Description

Product name	Recombinant Human GGH protein
Purity	> 95 % SDS-PAGE. ab123172 is purified using conventional chromatography techniques.
Expression system	Escherichia coli
Accession	<u>Q92820</u>
Protein length	Full length protein
Animal free	No
Nature	Recombinant
Species	Human
Sequence	MGSSHHHHHSSGLVPRGSHMRPHGDTAKKPIIGILMQK CRNKVMKKNYGR YYAASYVKYLESAGARVVPVRLDLTEKDYEILFKSINGILFP GGSVDLR RSDYAKVAKIFYNLSIQSFDDGDYFPVWGTCLGFEELSLLI SGECLLTAT DTVDVAMPLNFTGGQLHSRMFQNFPTTELLSLAVEPLTAN FHKWSLSVKN FTMNEKLLKFFNVLTTNTDGKIEFISTMEGYKYPVYGVQWH PEKAPYEWK NLDGISHAPNAVKTAFYLAEFFVNEARKNNHHFKSESEEE KALIQFSPI YTGNISSFQQCYIFD
Predicted molecular weight	36 kDa including tags
Amino acids	25 to 318
Tags	His tag N-Terminus

Specifications

Our **Abpromise guarantee** covers the use of **ab123172** in the following tested applications.

The application notes include recommended starting dilutions; optimal dilutions/concentrations should be determined by the end user.

Applications	SDS-PAGE Mass Spectrometry
Mass spectrometry	MALDI-TOF

Form	Liquid
Additional notes	This product was previously labelled as Glutamyl hydrolase gamma

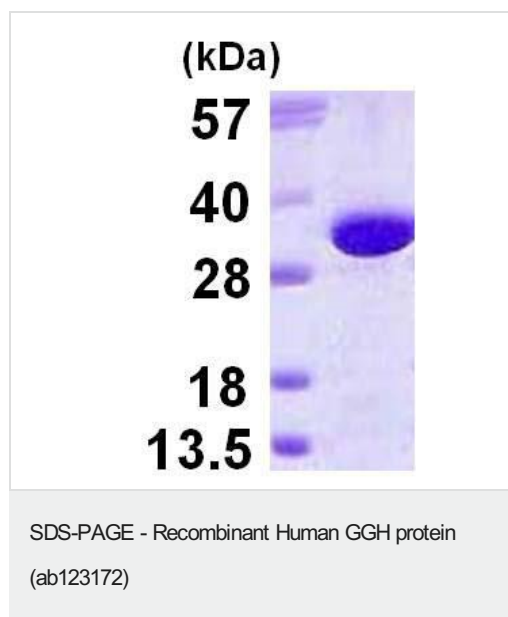
Preparation and Storage

Stability and Storage	Shipped at 4°C. Store at +4°C short term (1-2 weeks). Upon delivery aliquot. Store at -20°C or -80°C. Avoid freeze / thaw cycle. pH: 8.00 Constituents: 0.02% DTT, 0.32% Tris HCl, 10% Glycerol (glycerin, glycerine), 0.58% Sodium chloride
------------------------------	--

General Info

Function	Hydrolyzes the polyglutamate sidechains of pteroylpolyglutamates. Progressively removes gamma-glutamyl residues from pteroylpoly-gamma-glutamate to yield pteroyl-alpha-glutamate (folic acid) and free glutamate. May play an important role in the bioavailability of dietary pteroylpolyglutamates and in the metabolism of pteroylpolyglutamates and antifolates.
Sequence similarities	Belongs to the peptidase C26 family. Contains 1 gamma-glutamyl hydrolase domain.
Cellular localization	Secreted > extracellular space. Lysosome. Melanosome. While its intracellular location is primarily the lysosome, most of the enzyme activity is secreted. Identified by mass spectrometry in melanosome fractions from stage I to stage IV.

Images



15% SDS-PAGE showing ab123172 at approximately 35.9 kDa (3µg loaded).

Please note: All products are "FOR RESEARCH USE ONLY. NOT FOR USE IN DIAGNOSTIC PROCEDURES"

Our Abpromise to you: Quality guaranteed and expert technical support

- Replacement or refund for products not performing as stated on the datasheet
- Valid for 12 months from date of delivery
- Response to your inquiry within 24 hours

- We provide support in Chinese, English, French, German, Japanese and Spanish
- Extensive multi-media technical resources to help you
- We investigate all quality concerns to ensure our products perform to the highest standards

If the product does not perform as described on this datasheet, we will offer a refund or replacement. For full details of the Abpromise, please visit <https://www.abcam.com/abpromise> or contact our technical team.

Terms and conditions

- Guarantee only valid for products bought direct from Abcam or one of our authorized distributors