

Recombinant Human GIPC1 protein ab96769

1 Image

Description

Product name	Recombinant Human GIPC1 protein
Purity	> 95 % SDS-PAGE. ab96769 is purified using conventional chromatography techniques.
Expression system	Escherichia coli
Accession	<u>O14908</u>
Protein length	Full length protein
Animal free	No
Nature	Recombinant
Species	Human
Sequence	<b>MGSSHHHHHH SSGLVPRGSH</b> MPLGLGRRKK APPLVENEEA EPGRGGLGVG EPGPLGGGS GGPQMGLPPP PPALRPRLVF HTQLAHGSPT GRIEGFTNVK ELYGKIAEAF RLPTAEVMFC TLNTHKVDMD KLLGGQIGLE DFIFAHVKGQ RKEVEVFKSE DALGLTITDN GAGYAFIKRI KEGSVIDHIH LISVGDMIEA INGQSLLGCR HYEVARLLKE LPRGRTFTLK LTEPRKAFDM ISQRSAGGRP GSGPQLGTGR GTLRLRSRGP ATVEDLPSAF EEKAIEKVDD LLESYMGIRD TELAATMVEL GKDKRNPDEL AEALDERLGD FAFPDEFVFD VWGAIGDAKV GRY
Predicted molecular weight	38 kDa including tags
Amino acids	1 to 333
Tags	His tag N-Terminus

Specifications

Our <b>Abpromise guarantee</b> covers the use of <b>ab96769</b> in the following tested applications.	
The application notes include recommended starting dilutions; optimal dilutions/concentrations should be determined by the end user.	
Applications	Mass Spectrometry SDS-PAGE
Mass spectrometry	MALDI-TOF

**Form** Liquid

## Preparation and Storage

**Stability and Storage** Shipped at 4°C. Upon delivery aliquot and store at -20°C or -80°C. Avoid repeated freeze / thaw cycles.

pH: 8.00

Constituents: 0.0154% DTT, 0.316% Tris HCl, 0.0292% EDTA, 20% Glycerol (glycerin, glycerine), 0.58% Sodium chloride

## General Info

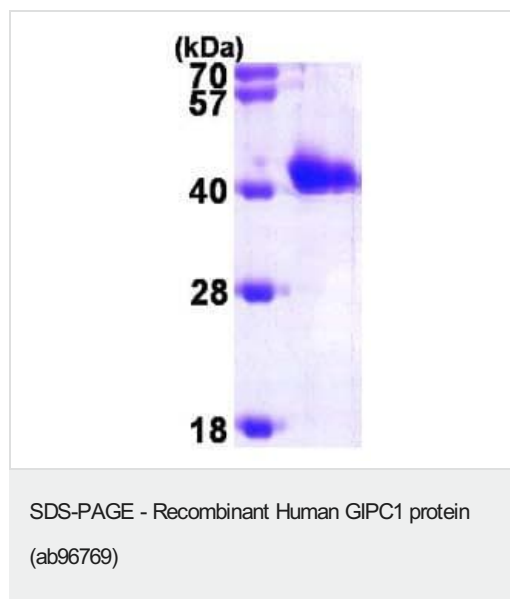
**Function** May be involved in G protein-linked signaling.

**Tissue specificity** Widely expressed.

**Sequence similarities** Belongs to the GIPC family.  
Contains 1 PDZ (DHR) domain.

**Cellular localization** Cytoplasm. Membrane.

## Images



15% SDS-PAGE showing ab96769 at approximately 38.2kDa (3μg).

**Please note:** All products are "FOR RESEARCH USE ONLY. NOT FOR USE IN DIAGNOSTIC PROCEDURES"

## Our Abpromise to you: Quality guaranteed and expert technical support

- Replacement or refund for products not performing as stated on the datasheet
- Valid for 12 months from date of delivery
- Response to your inquiry within 24 hours
- We provide support in Chinese, English, French, German, Japanese and Spanish

- Extensive multi-media technical resources to help you
- We investigate all quality concerns to ensure our products perform to the highest standards

If the product does not perform as described on this datasheet, we will offer a refund or replacement. For full details of the Abpromise, please visit <https://www.abcam.com/abpromise> or contact our technical team.

#### **Terms and conditions**

---

- Guarantee only valid for products bought direct from Abcam or one of our authorized distributors