

# Recombinant Human GLTP protein (His tag) ab276609

1 Image

### Description

<b>Product name</b>	Recombinant Human GLTP protein (His tag)
<b>Purity</b>	> 90 % SDS-PAGE.
<b>Endotoxin level</b>	< 1.000 Eu/μg
<b>Expression system</b>	HEK 293 cells
<b>Accession</b>	<b><u>Q9NZD2</u></b>
<b>Protein length</b>	Full length protein
<b>Animal free</b>	No
<b>Nature</b>	Recombinant
<b>Species</b>	Human
<b>Sequence</b>	MALLAEHLLK PLPADKQIET GPFLEAVSHL PPFFDCLGSP VFTPIKADIS GNITKIKAVY DTNPAKFRTL QNILEVEKEM YGAEWPKVGA TLALMWLKRG LRFIQVFLQS ICDGERDENH PNLIRVNATK AYEMALKKYH GWIVQKIFQA ALYAAPYKSD FLKALSKGQN VTEEECLEKI RLFLVNYTAT IDVIYEMYTQ MNAELNYKV
<b>Predicted molecular weight</b>	26 kDa including tags
<b>Molecular weight information</b>	The recombinant human GLTP consists of 228 amino acids and predicts a molecular mass of 26.2 kDa.
<b>Amino acids</b>	1 to 209
<b>Tags</b>	His tag N-Terminus
<b>Additional sequence information</b>	Predicted N-terminus: His.

### Specifications

Our **Abpromise guarantee** covers the use of **ab276609** in the following tested applications.

The application notes include recommended starting dilutions; optimal dilutions/concentrations should be determined by the end user.

<b>Applications</b>	SDS-PAGE
<b>Form</b>	Lyophilized

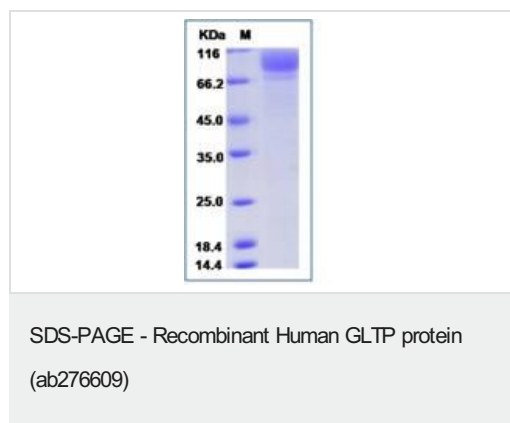
### Preparation and Storage

<b>Stability and Storage</b>	Shipped at Room Temperature. Upon delivery aliquot. Store at -20°C or -80°C. Avoid freeze / thaw cycle.  pH: 7.4 Constituent: 100% PBS
<b>Reconstitution</b>	This information is lot specific. Please contact our technical Support team for details.

## General Info

<b>Function</b>	Accelerates the intermembrane transfer of various glycolipids. Catalyzes the transfer of various glycosphingolipids between membranes but does not catalyze the transfer of phospholipids. May be involved in the intracellular translocation of glucosylceramides.
<b>Tissue specificity</b>	Detected in fibroblasts (at protein level). Detected in fibroblasts and in various cancer cell lines.
<b>Sequence similarities</b>	Belongs to the GLTP family.
<b>Cellular localization</b>	Cytoplasm.

## Images



SDS-PAGE analysis of ab276609

**Please note:** All products are "FOR RESEARCH USE ONLY. NOT FOR USE IN DIAGNOSTIC PROCEDURES"

## Our Abpromise to you: Quality guaranteed and expert technical support

- Replacement or refund for products not performing as stated on the datasheet
- Valid for 12 months from date of delivery
- Response to your inquiry within 24 hours
- We provide support in Chinese, English, French, German, Japanese and Spanish
- Extensive multi-media technical resources to help you
- We investigate all quality concerns to ensure our products perform to the highest standards

If the product does not perform as described on this datasheet, we will offer a refund or replacement. For full details of the Abpromise, please visit <https://www.abcam.com/abpromise> or contact our technical team.

## Terms and conditions

---

- Guarantee only valid for products bought direct from Abcam or one of our authorized distributors