

Recombinant Human GMPS protein ab123202

1 Image

Description

Product name	Recombinant Human GMPS protein
Purity	> 90 % SDS-PAGE. ab123202 is purified using conventional chromatography techniques.
Expression system	Escherichia coli
Accession	<u>P49915</u>
Protein length	Full length protein
Animal free	No
Nature	Recombinant
Species	Human
Sequence	MGSSHHHHHH SSGLVPRGSH MGSHMALCNG DSKLENAGGD LKDGHHHYEG AVVILDAGAQ YGKVIDRRVR ELFVQSEIFP LETPAFAIKE QGFRAIISG GPNSVYAEDA PWFDPAIFTI GKPVLGICYG MQMMNKVFGG TVHKKSVRED GVFNISVDNT CSLFRGLQKE EVVLLTHGDS VDKVADGFKV VARSGNIVAG IANESKKLYG AQFHPEVGLT ENGKVLKNF LYDIAGCSGT FTVQNRELEC IREIKERVGT SKVLVLLSGG VDSTVCTALL NRALNQEQVI AVHIDNGFMR KRESQSVEEA LKKLGIQVKV INAAHSFYNG TTTLPISEDD RTPRKRIKT LNMTTSPEEK RKIIGDTFVK IANEVIGEMN LKPEEVFLAQ GTLRPDLIES ASLVASGKAE LIKTHHNDTE LIRKLREEGK VIEPLKDFHK DEVRILGREL GLPEELVSRH PFPGPGLAIR VICAEEPYC KDFPETNNIL KIVADFSASV KKPHTLLQRV KACTTEEDQE KLMQITSLHS LNAFLLPIKT VGVQGDGRSY SYVCGISSKD EPDWESLIFL ARLIPRMCHN VNRVVYIFGP PVKEPPTDVT PTFLTGTGVL TLRQADFEAH NILRESGYAG KISQMPVILT PLHFDRDPLQ KQPSCQRSVV IRTFITSDFM TGIPATPGNE IPVEVVLKMV TEIKKIPGIS RIMYDLTSKP PGTTEWE
Predicted molecular weight	79 kDa including tags
Amino acids	1 to 693
Tags	His tag N-Terminus

Specifications

Our **Abpromise guarantee** covers the use of **ab123202** in the following tested applications.

The application notes include recommended starting dilutions; optimal dilutions/concentrations should be determined by the end user.

Applications	SDS-PAGE
Form	Liquid
Additional notes	This product was previously labelled as GMP Synthase

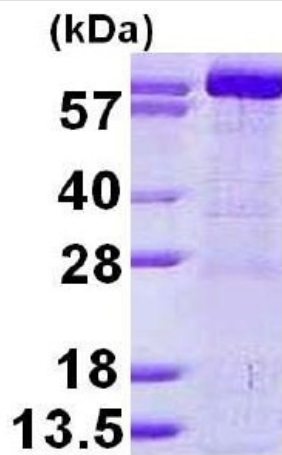
Preparation and Storage

Stability and Storage	Shipped at 4°C. Upon delivery aliquot and store at -20°C or -80°C. Avoid repeated freeze / thaw cycles. pH: 8.00 Constituents: 0.02% DTT, 0.32% Tris HCl, 30% Glycerol (glycerin, glycerine), 0.58% Sodium chloride
------------------------------	---

General Info

Function	Involved in the de novo synthesis of guanine nucleotides which are not only essential for DNA and RNA synthesis, but also provide GTP, which is involved in a number of cellular processes important for cell division.
Pathway	Purine metabolism; GMP biosynthesis; GMP from XMP (L-Gln route): step 1/1.
Involvement in disease	Note=A chromosomal aberration involving GMPS is found in acute myeloid leukemias. Translocation t(3,11)(q25,q23) with MLL.
Sequence similarities	Contains 1 glutamine amidotransferase type-1 domain. Contains 1 GMP-binding domain.
Cellular localization	Cytoplasm.

Images



15% SDS-PAGE showing ab123202 (3 μ g).

SDS-PAGE - Recombinant Human GMPS protein
(ab123202)

Please note: All products are "FOR RESEARCH USE ONLY. NOT FOR USE IN DIAGNOSTIC PROCEDURES"

Our Abpromise to you: Quality guaranteed and expert technical support

- Replacement or refund for products not performing as stated on the datasheet
- Valid for 12 months from date of delivery
- Response to your inquiry within 24 hours
- We provide support in Chinese, English, French, German, Japanese and Spanish
- Extensive multi-media technical resources to help you
- We investigate all quality concerns to ensure our products perform to the highest standards

If the product does not perform as described on this datasheet, we will offer a refund or replacement. For full details of the Abpromise, please visit <https://www.abcam.com/abpromise> or contact our technical team.

Terms and conditions

- Guarantee only valid for products bought direct from Abcam or one of our authorized distributors