

Recombinant Human GNAI2 protein ab134531

[1 Image](#)

Description

Product name	Recombinant Human GNAI2 protein	
Purity	> 90 % SDS-PAGE. ab134531 is purified using conventional chromatography techniques.	
Expression system	Escherichia coli	
Accession	<u>P04899</u>	
Protein length	Full length protein	
Animal free	No	
Nature	Recombinant	
Species	Human	
Sequence	MGSSHHHHHSSGLVPRGSHMGCTVSAEDKAAAERSK MIDKNLREDGEKA AREVKLLLLGAGESGKSTIVKQMKIIHEDGYSEEECRQYRA VVYSNTIQS IMAVKAMGNLQIDFADPSRADDARQLFALSCTAEEQGVL PDDLSGVIRR LWADHGVQACFGRSREYQLNDSAAAYLNDLERIAQSDYIP TQQDVLRTV KTTGIVETHFTFKDLHFKMFDVGGQRSERKKWIHCFEGVT AIFCVLSA YDLVLAEDEEMNRMHESMKLFDSICNNKWFTDTSIILFLNK KDLFEEKIT HSPLTICFPEYTGANKYDEAASYQSKFEDLNKRKDKTEYI HFTCATDT KNVQVFVDAVTDVIIKNNLKDCGLF	
Predicted molecular weight	42 kDa including tags	
Amino acids	1 to 355	
Tags	His tag N-Terminus	

Specifications

Our **Abpromise guarantee** covers the use of **ab134531** in the following tested applications.

The application notes include recommended starting dilutions; optimal dilutions/concentrations should be determined by the end user.

Applications Mass Spectrometry

	SDS-PAGE
Mass spectrometry	MALDI-TOF
Form	Liquid
Additional notes	This product was previously labelled as G protein alpha Inhibitor 2

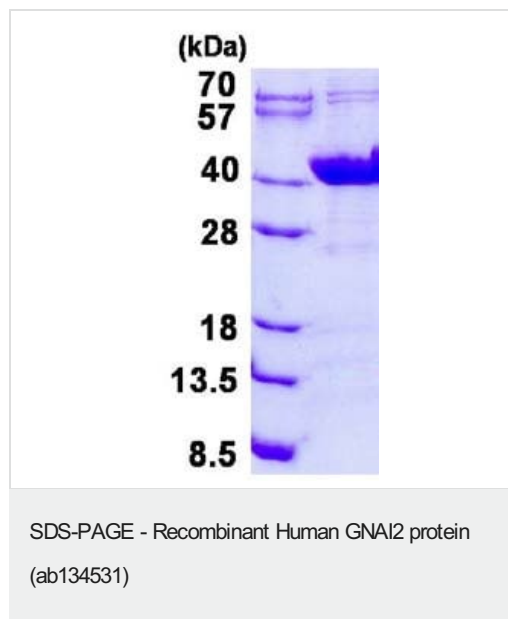
Preparation and Storage

Stability and Storage	Shipped at 4°C. Store at +4°C short term (1-2 weeks). Upon delivery aliquot. Store at -20°C or -80°C. Avoid freeze / thaw cycle. pH: 8.00 Constituents: 0.88% Sodium chloride, 10% Glycerol (glycerin, glycerine), 0.32% Tris HCl
------------------------------	---

General Info

Function	Guanine nucleotide-binding proteins (G proteins) are involved as modulators or transducers in various transmembrane signaling systems. The G(i) proteins are involved in hormonal regulation of adenylate cyclase: they inhibit the cyclase in response to beta-adrenergic stimuli. May play a role in cell division.
Sequence similarities	Belongs to the G-alpha family. <i>G(i/o/t/z)</i> subfamily.
Cellular localization	Cytoplasm. Cytoplasm > cytoskeleton > centrosome. Cell membrane. Localizes in the centrosomes of interphase and mitotic cells. Detected at the cleavage furrow and/or the midbody.

Images



15% SDS-PAGE analysis of 3 µg ab134531.

Please note: All products are "FOR RESEARCH USE ONLY. NOT FOR USE IN DIAGNOSTIC PROCEDURES"

Our Abpromise to you: Quality guaranteed and expert technical support

- Replacement or refund for products not performing as stated on the datasheet
- Valid for 12 months from date of delivery
- Response to your inquiry within 24 hours

- We provide support in Chinese, English, French, German, Japanese and Spanish
- Extensive multi-media technical resources to help you
- We investigate all quality concerns to ensure our products perform to the highest standards

If the product does not perform as described on this datasheet, we will offer a refund or replacement. For full details of the Abpromise, please visit <https://www.abcam.com/abpromise> or contact our technical team.

Terms and conditions

- Guarantee only valid for products bought direct from Abcam or one of our authorized distributors