

Recombinant Human GP210 protein ab153211

1 Image

Description	
Product name	Recombinant Human GP210 protein
Expression system	Wheat germ
Protein length	Full length protein
Animal free	No
Nature	Recombinant
Species	Human
Sequence	MAARGRGLLLLTLSVLLAAGPSAAAAKLNIPKVLLPFTRAT RVNFTLEAS EGCYRWLSTRPEVASIEPLGLDEQQCSQKAVVQARLTQP ARLTSIIFAED ITTGQVLRCDAMDLIHDIQVSTTRELYLEDSPLELKIQALDS EGNTFS TLAGLVFEWTIVKDSEADRFSDSHNALRILTFLESTYIPPSYI SEMEKAA KQGDITLVSGMKTGSSKLGKARIQEAQVYKNVRPAEVRLLILE NILLNPAYD VYLMVGTSIHYKVQKIRQGKITELSMPSDQYELQLQNSIPGP EGDPAAPV AVLAQDTSMTALQLGQSSVLGHRISRMQGASRLPNSTI YVVEPGYLG TVHPGDRWVLETGRLYEITIEVDFKFSNKVYVSDNIRIETVL PAEFFEVL SSSQNGSYHRIRALKRGQTAIDAALTSVVDQDGGVHILQV PVWNQQEVEI HIPITLYPSILTFWQPKTGAYQYTIRAHGGSGNFSWSSSSH LVATVTVK GVMTTGSDIGFSVIQAHQVQNPVLFHFGEMKVYVIEPHSMET APCQVEARVG QALELPLRISGLMPGGASEVVTLSDCSHFDLAVEVENQG VFQPLPGRLLP GSEHCSGIRVKAQAQGSTLLVSYRHGHVHLSAKITIAAYL PLKAVDPSS VALVTLGSSKEMLFEGGPRPWILEPSKFFQNVTAEDTDSI GLALFAPHSS RNYQQHWILVTCQALGEQVIALSVGNKPSLTNPFAVEPA

VVKFVCAPPS
 RLTLAPVYTSPQLDMSCPLLQQNKQVVPVSSHNPRLDL
 AAYDQEGRRFD
 NFSSLSIQWESTRPVLASIEPELPMQLVSQDDESGQKKLH
 GLQAILVHEA
 SGTTAITATATGYQESHLSARTKQPHDPLVPLSASIELILV
 EDVRVSPE
 EVTYNHPGIQAE LRIREGSGYFFLNTSTADVVKVAYQEAR
 GVAMVSLGH RSPLLVFIPYLGCCVVN

Amino acids	1 to 967
Tags	GST tag N-Terminus

Specifications

Our **Abpromise guarantee** covers the use of **ab153211** in the following tested applications.

The application notes include recommended starting dilutions; optimal dilutions/concentrations should be determined by the end user.

Applications	Western blot ELISA
Form	Liquid
Additional notes	

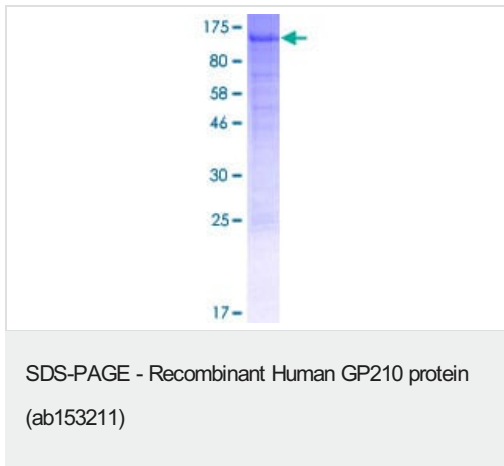
Preparation and Storage

Stability and Storage	Shipped on dry ice. Upon delivery aliquot and store at -80°C. Avoid freeze / thaw cycles. pH: 8.00 Constituents: 0.31% Glutathione, 0.79% Tris HCl
------------------------------	--

General Info

Function	Nucleoporin essential for nuclear pore assembly and fusion, nuclear pore spacing, as well as structural integrity.
Tissue specificity	Ubiquitous expression, with highest levels in lung, liver, pancreas, testis, and ovary, intermediate levels in brain, kidney, and spleen, and lowest levels in heart and skeletal muscle.
Sequence similarities	Belongs to the NUP210 family.
Post-translational modifications	N-glycosylated, but not all potential glycosylation sites may be used. Contains high-mannose type oligosaccharides. Phosphorylated at Ser-1881 in mitosis specifically; not phosphorylated in interphase.
Cellular localization	Nucleus > nuclear pore complex. Nucleus membrane. Endoplasmic reticulum membrane.

Images



ab153211 on a 12.5% SDS-PAGE stained with Coomassie Blue.

Please note: All products are "FOR RESEARCH USE ONLY. NOT FOR USE IN DIAGNOSTIC PROCEDURES"

Our Abpromise to you: Quality guaranteed and expert technical support

- Replacement or refund for products not performing as stated on the datasheet
- Valid for 12 months from date of delivery
- Response to your inquiry within 24 hours
- We provide support in Chinese, English, French, German, Japanese and Spanish
- Extensive multi-media technical resources to help you
- We investigate all quality concerns to ensure our products perform to the highest standards

If the product does not perform as described on this datasheet, we will offer a refund or replacement. For full details of the Abpromise, please visit <https://www.abcam.com/abpromise> or contact our technical team.

Terms and conditions

- Guarantee only valid for products bought direct from Abcam or one of our authorized distributors