

## Product datasheet

# Recombinant Human GPCR GPR110 protein ab166105

[1 Image](#)

### Description

---

|                          |   |
|--------------------------|---|
| <b>Product name</b>      | Recombinant Human GPCR GPR110 protein   |
| <b>Expression system</b> | Wheat germ  |
| <b>Protein length</b>    | Full length protein   |
| <b>Animal free</b>       | No  |
| <b>Nature</b>            | Recombinant   |
| <b>Species</b>           | Human   |
| <b>Sequence</b>          | MKVGVLWLISFFFTFDGHGGFLGKNDGIKTKKELVNKKKH<br>LGPVEEYQL<br>LLQVTYRDSKEKRDLRNFLKLLKPPLLWSHGLIRIIRAKATT<br>DCNSLNGV<br>LQCTCEDSYTWFPSPCLDPQNCYLHTAGALPSCECHLNN<br>LSQSVNFCERT<br>KMWGTFKINERFTNDLLNSSSAISKYANGIEIQLKKAYERIQ<br>GFESVQV TQFRMSLLSPKLECNIGI |
| <b>Amino acids</b>       | 1 to 218  |
| <b>Tags</b>              | GST tag N-Terminus  |

### Specifications

---

Our **Abpromise guarantee** covers the use of **ab166105** in the following tested applications.

The application notes include recommended starting dilutions; optimal dilutions/concentrations should be determined by the end user.

|                     |                       |
|---------------------|-----------------------|
| <b>Applications</b> | ELISA<br>Western blot |
| <b>Form</b>         | Liquid                |

### Additional notes

### Preparation and Storage

---

|                              |   |
|------------------------------|---|
| <b>Stability and Storage</b> | Shipped on dry ice. Upon delivery aliquot and store at -80°C. Avoid freeze / thaw cycles.<br>pH: 8.00 |
|------------------------------|---|

Constituents: 0.31% Glutathione, 0.79% Tris HCl

## General Info

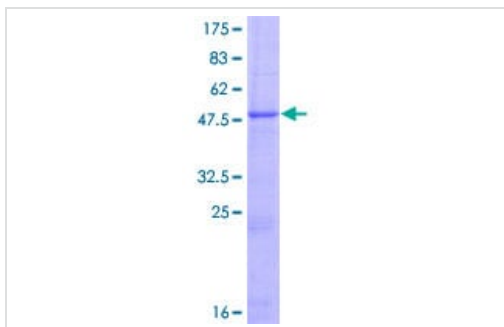
---

|                              |   |
|------------------------------|---|
| <b>Function</b>              | Orphan receptor.  |
| <b>Sequence similarities</b> | Belongs to the G-protein coupled receptor 2 family. LN-TM7 subfamily.<br>Contains 1 GPS domain.<br>Contains 1 SEA domain. |
| <b>Cellular localization</b> | Cell membrane.  |

---

## Images

---



ab166105 on a 12.5% SDS-PAGE stained with Coomassie Blue.

SDS-PAGE - Recombinant Human GPCR GPR110 protein (ab166105)

**Please note:** All products are "FOR RESEARCH USE ONLY. NOT FOR USE IN DIAGNOSTIC PROCEDURES"

## Our Abpromise to you: Quality guaranteed and expert technical support

---

- Replacement or refund for products not performing as stated on the datasheet
- Valid for 12 months from date of delivery
- Response to your inquiry within 24 hours
- We provide support in Chinese, English, French, German, Japanese and Spanish
- Extensive multi-media technical resources to help you
- We investigate all quality concerns to ensure our products perform to the highest standards

If the product does not perform as described on this datasheet, we will offer a refund or replacement. For full details of the Abpromise, please visit <https://www.abcam.com/abpromise> or contact our technical team.

## Terms and conditions

---

- Guarantee only valid for products bought direct from Abcam or one of our authorized distributors