

Recombinant Human GPD2 protein ab132692

1 Image

| Description | |
|----------------------------|---|
| Product name | Recombinant Human GPD2 protein |
| Expression system | Wheat germ |
| Protein length | Protein fragment |
| Animal free | No |
| Nature | Recombinant |
| Species | Human |
| Sequence | MAFQKAVKGTLVGGGALATVLGLSQFAHYRRKQMNLAYV KAADCISEPVN REPPSREAQLLTLQNTSEFDILVIGGGATGSGCALDAVTR GLKTALVERD DFSSGTSSRSTKLIHGGVRYLQKAIMKLDIEQYRMVKEALH ERANLLEIA PHLSAPLPIMLPVYKWWQLPYYWVGIKLYDLVAGSNCLKS SYVLSKSRAL EHFPMLQKDKLVGAIVYYDGQHNDARMNLAIALTAARYGA ATANYMEVVS LLKKTDPQTGKVHVSGARCKDVLTGQEFDVRAKCVINAT GPFTDSVRKMD DKDAAAICQPSAGVHVMMPGYSPESMGLLDPATSDGRVI FFLPWQKMTIAGTTDTPTDVTHHPIPSEEDINFILNEV |
| Predicted molecular weight | 67 kDa including tags |
| Amino acids | 1 to 378 |

| Specifications | |
|--|-----------------------------------|
| Our Abpromise guarantee covers the use of ab132692 in the following tested applications. | |
| The application notes include recommended starting dilutions; optimal dilutions/concentrations should be determined by the end user. | |
| Applications | ELISA SDS-PAGE Western blot |
| Form | Liquid |
| Additional notes | |

Preparation and Storage

Stability and Storage

Shipped on dry ice. Upon delivery aliquot and store at -80°C. Avoid freeze / thaw cycles.

pH: 8.00

Constituents: 0.31% Glutathione, 0.79% Tris HCl

General Info

Pathway

Polyol metabolism; glycerol degradation via glycerol kinase pathway; glycerone phosphate from sn-glycerol 3-phosphate (anaerobic route): step 1/1.

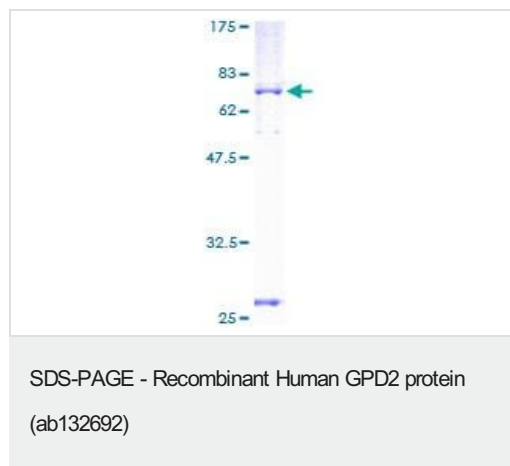
Sequence similarities

Belongs to the FAD-dependent glycerol-3-phosphate dehydrogenase family.
Contains 2 EF-hand domains.

Cellular localization

Mitochondrion.

Images



12.5% SDS-PAGE analysis of ab132692 stained with Coomassie Blue.

Please note: All products are "FOR RESEARCH USE ONLY. NOT FOR USE IN DIAGNOSTIC PROCEDURES"

Our Abpromise to you: Quality guaranteed and expert technical support

- Replacement or refund for products not performing as stated on the datasheet
- Valid for 12 months from date of delivery
- Response to your inquiry within 24 hours
- We provide support in Chinese, English, French, German, Japanese and Spanish
- Extensive multi-media technical resources to help you
- We investigate all quality concerns to ensure our products perform to the highest standards

If the product does not perform as described on this datasheet, we will offer a refund or replacement. For full details of the Abpromise, please visit <https://www.abcam.com/abpromise> or contact our technical team.

Terms and conditions

- Guarantee only valid for products bought direct from Abcam or one of our authorized distributors