

Recombinant human GRK6 protein ab125576

2 Images

Description

Product name	Recombinant human GRK6 protein
Biological activity	The specific activity of ab125576 was determined to be 11 nmol/min/mg.
Purity	> 80 % Densitometry. Purity determined to be >80% by densitometry. Affinity purified.
Expression system	Baculovirus infected Sf9 cells
Accession	<u>P43250-2</u>
Protein length	Full length protein
Animal free	No
Nature	Recombinant
Species	Human
Predicted molecular weight	93 kDa including tags
Amino acids	1 to 589

Specifications

Our **Abpromise guarantee** covers the use of **ab125576** in the following tested applications.

The application notes include recommended starting dilutions; optimal dilutions/concentrations should be determined by the end user.

Applications	Western blot Functional Studies SDS-PAGE
Form	Liquid
Additional notes	<u>ab204876</u> (Cdc25C peptide) can be utilized as a substrate for assessing kinase activity

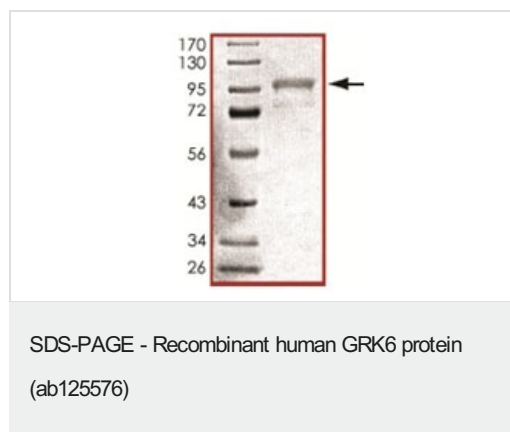
Preparation and Storage

Stability and Storage	Shipped on dry ice. Upon delivery aliquot and store at -80°C. Avoid freeze / thaw cycles. pH: 7.50 Constituents: 0.31% Glutathione, 0.002% PMSF, 0.004% DTT, 0.79% Tris HCl, 0.003% EDTA, 25% Glycerol (glycerin, glycerine), 0.88% Sodium chloride This product is an active protein and may elicit a biological response in vivo, handle with caution.
------------------------------	---

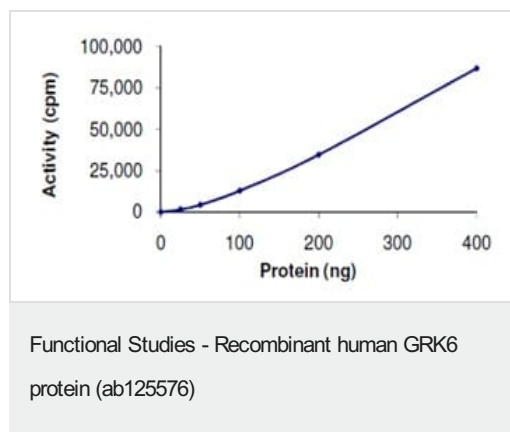
General Info

Function	Specifically phosphorylates the activated forms of G protein-coupled receptors.
Tissue specificity	Widely expressed.
Sequence similarities	Belongs to the protein kinase superfamily. AGC Ser/Thr protein kinase family. GPRK subfamily. Contains 1 AGC-kinase C-terminal domain. Contains 1 protein kinase domain. Contains 1 RGS domain.
Post-translational modifications	It is uncertain whether palmitoylation is on Cys-561 and/or Cys-562 and/or Cys-565.
Cellular localization	Membrane.

Images



SDS-PAGE analysis of ab125576.



The specific activity of ab125576 was determined to be 11 nmol/min/mg by Kinase Assay.

Please note: All products are "FOR RESEARCH USE ONLY. NOT FOR USE IN DIAGNOSTIC PROCEDURES"

Our Abpromise to you: Quality guaranteed and expert technical support

- Replacement or refund for products not performing as stated on the datasheet
- Valid for 12 months from date of delivery

- Response to your inquiry within 24 hours
- We provide support in Chinese, English, French, German, Japanese and Spanish
- Extensive multi-media technical resources to help you
- We investigate all quality concerns to ensure our products perform to the highest standards

If the product does not perform as described on this datasheet, we will offer a refund or replacement. For full details of the Abpromise, please visit <https://www.abcam.com/abpromise> or contact our technical team.

Terms and conditions

- Guarantee only valid for products bought direct from Abcam or one of our authorized distributors