

Recombinant human HDAC6 protein (Active) ab42632

[3 References](#) [2 Images](#)

Description

Product name	Recombinant human HDAC6 protein (Active)
Biological activity	Specific Activity: ≥350 pmol/min/μg. Assay Conditions: 25 mM Tris/HCl, pH 8.0, 137 mM NaCl, 2.7 mM KCl, 1 mM MgCl ₂ , and 0.1 mg/ml BSA, 20 μM BPS HDAC substrate 3, and HDAC6 (3.1 – 200 ng). Incubation condition: 30 min at 37°C followed by developing for 15 min at room temperature.
Purity	> 65 % SDS-PAGE. Protein was purified by affinity chromatography and gel filtration.
Expression system	Baculovirus infected Sf9 cells
Accession	<u>Q9UBN7</u>
Protein length	Full length protein
Animal free	No
Nature	Recombinant
Species	Human
Sequence	"MSPILGYWKIKGLVQPTRLLEYLEEKYEEHLYERDEGDK WRNKKFELG LEFPNLPYYIDGDVKLTQSMIIRYADKHNMLGGCPKERAE ISMLEGAV LDIRYGVSRIAYSKDFETLKVDFLSKLPEMLKMFEDRLCHK TYLNGDHVT HPDFMLYDALDVVLYMDPMCLDAFPKLVCFKKRIEAIQID KYLKSSKYIAWPLQGWQATFGGGDH PPKSDPMGHHHHHGRRRASVAAGILVPRGSP GLDGIYARGIQMTSTGQDSTTTRQRRSRQNPQSPQDSSV TSKRNIKKGA VPRSIPNLAEVKKKGKMKKLQGAMEEDLIVGLQGMDLNL EAEALAGTGLV LDEQLNEFHCLWDDSFPEGPERLHAIKEQLIQEGLLDRCV SFQARFAEKE ELMLVHSLEYIDLMETTQYMNEGELRVLADTYDSVYLHPN SYSCACLASG SVLRLVDAVLGAEIRNGMAIRPPGHHAQHSLMDGYCMFN HVAVAARYAQ QKHRIRRVLVDWDVHHGQGTQFTFDQDPSVLYFSIHRYE QGRFWPHLKA

SNWSTTGFGQQGYTINVPWNQVGMRDADYAAFLHVLL
PVALEFQPQLV
LVAAGFDALQGDPKGEMAATPAGFAQLTHLLMGLAGGKL
ILSLEGGYNLR
ALAEGVSASLHTLLGDPCPMLESPGAPCRSAQASVSCAL
EALPFWEVLV
RSTETVERDNMEEDNVEESEESEGPWEPPVLPILTWPVLQ
SRTGLVYDQNM
MNHCLNWDSSHPEVPQRILRIMCRLEELGLAGRCLTLTPR
PATEAELLTC
HSAEYVGHRLRATEKMKTREHRESSNFDSMCPSTFACA
QLATGAACRL
VEAVLSGEVLNGAAVVRPPGHHAEQDAACGFCFFNSVA
VAARHAQTISGH
ALRILVDWDVHHGNGTQHMFEDDPSVLYSLHRYDHGTF
FPMGDEGASS
QIGRAAGTGFTVNVANGPRMGDADYLAAWHRLVLPYAY
EFNPELVLVSA
GFDAARGDPLGGCQVSPEGYHLTHLLMGLASGRILLILEG
GYNLTSISE
SMAACTRSLLDGPPPLLTLRPPLSGALASITETIQVHRRY
WRSLRVMKV
EDREGPSSSKLVTKKAPQPAKPRLAERMTTREKKVLEAG
MGKVTSASFGE
ESTPGQTNSETAVVALTQDQPSEAATGGATLAQTISEAAI
GGAMLGQTTS
EEAVGGATPDQTTSEETVGGAILDQTTSEDAVGGATLGQT
TSEEAVGGAT
LAQTTSEAAMEGATLDQTTSEEAPGGTELIQTPLASSTDH
QTPPTSPVQG
TTPQISPSTLIGSLRTELGSESQGASESQAPGEENLLGEA
AGGQDMADS
MLMQGSRGLTDQAIFYAVTPLPWCPHLVAVCPIPAAGLDV
TQPCGDCGTI
QENWVCLSCYQVYCGRYINGHMLQHHGNSGHPLVLSYIDL
SAWCYYCQAYVHHQALLDVKNIAHQNKFGEDMPHPH"

Predicted molecular weight	161 kDa including tags
Amino acids	1 to 1215
Tags	GST tag N-Terminus
Additional sequence information	BC069243. NP_006035 161 kDa including tags

Specifications

Our **Abpromise guarantee** covers the use of **ab42632** in the following tested applications.

The application notes include recommended starting dilutions; optimal dilutions/concentrations should be determined by the end user.

Applications	Inhibition Assay
	Functional Studies
	SDS-PAGE

Form Liquid

Preparation and Storage

Stability and Storage

Shipped on Dry Ice. Upon delivery aliquot. Store at -80°C. Avoid freeze / thaw cycle.

pH: 7.5

Constituents: 0.63% Tris HCl, 20% Glycerol (glycerin, glycerine), 0.64% Sodium chloride, 0.0165% Potassium chloride, 0.04% Tween, 0.0462% (R*,R*)-1,4-Dimercaptobutan-2,3-diol

This product is an active protein and may elicit a biological response in vivo, handle with caution.

General Info

Function

Responsible for the deacetylation of lysine residues on the N-terminal part of the core histones (H2A, H2B, H3 and H4). Histone deacetylation gives a tag for epigenetic repression and plays an important role in transcriptional regulation, cell cycle progression and developmental events. Histone deacetylases act via the formation of large multiprotein complexes (By similarity). Plays a central role in microtubule-dependent cell motility via deacetylation of tubulin.

Sequence similarities

Belongs to the histone deacetylase family. HD type 2 subfamily.
Contains 1 UBP-type zinc finger.

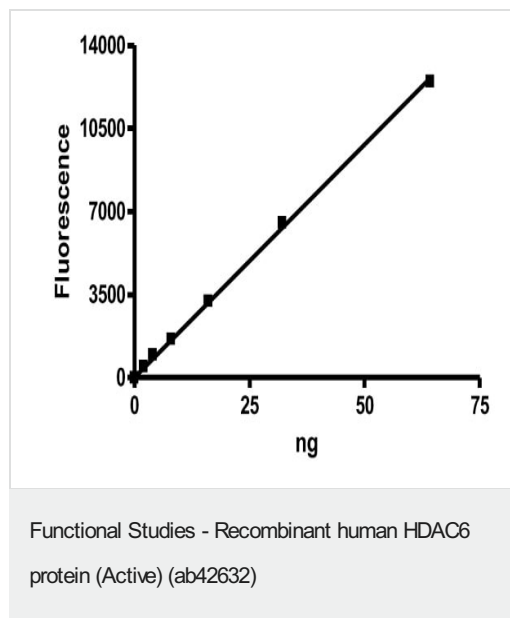
Post-translational modifications

Ubiquitinated. Its polyubiquitination however does not lead to its degradation.
Sumoylated in vitro.

Cellular localization

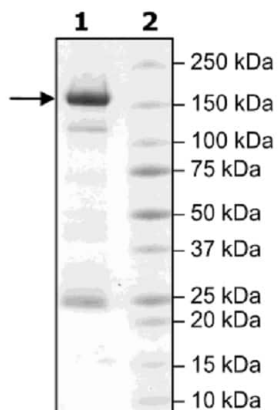
Nucleus. Cytoplasm. It is mainly cytoplasmic, where it is associated with microtubules.

Images



Specific Activity: ≥ 350 pmol/min/ μ g.

Assay Conditions: 25 mM Tris/HCl, pH 8.0, 137 mM NaCl, 2.7 mM KCl, 1 mM MgCl₂, and 0.1 mg/ml BSA, 20 μ M BPS HDAC substrate 3, and HDAC6 (3.1 – 200 ng). Incubation condition: 30 min at 37°C followed by developing for 15 min at room temperature.



4-20% SDS-PAGE - Recombinant human HDAC6 protein (Active) (ab42632).

Lane 1: 2µg HDAC6.

Lane 2: MW marker.

SDS-PAGE - Recombinant human HDAC6 protein
(Active) (ab42632)

Please note: All products are "FOR RESEARCH USE ONLY. NOT FOR USE IN DIAGNOSTIC PROCEDURES"

Our Abpromise to you: Quality guaranteed and expert technical support

- Replacement or refund for products not performing as stated on the datasheet
- Valid for 12 months from date of delivery
- Response to your inquiry within 24 hours
- We provide support in Chinese, English, French, German, Japanese and Spanish
- Extensive multi-media technical resources to help you
- We investigate all quality concerns to ensure our products perform to the highest standards

If the product does not perform as described on this datasheet, we will offer a refund or replacement. For full details of the Abpromise, please visit <https://www.abcam.com/abpromise> or contact our technical team.

Terms and conditions

- Guarantee only valid for products bought direct from Abcam or one of our authorized distributors