

Recombinant Human HEC1/HEC protein ab131907

1 Image

Description

Product name	Recombinant Human HEC1/HEC protein
Expression system	Wheat germ
Accession	<u><b>Q14777</b></u>
Protein length	Full length protein
Animal free	No
Nature	Recombinant
Species	Human
Sequence	<div>MKRSSVSSGGAGRLSMQELRSQDVNKQGLYTPQTKEKP</div> <div>TFGKLSINKPTS</div> <div>ERKVSLFGKRTSGHGSRNSQLGIFSSSEKIKDPRPLNDKA</div> <div>FIQQCIRQLC</div> <div>EFLTENGYAHNVSMKSLQAPSVKDFLKIFTFLYGFLCPSYE</div> <div>LPDTKFEEE</div> <div>VPRIFKDLGYPFALSKSSMYTVGAPHTWPHVAALVWLIDC</div> <div>IKIHTAMKE</div> <div>SSPLFDDGQPWGEEEDGIMHNKLFLDYTIKCYESFMSG</div> <div>DSFDEMNAEL</div> <div>QSKLKDLFNVDFAFKLESLEAKNRALNEQIARLEQEREKEP</div> <div>NRLESLRKLK</div> <div>ASLQGDVQKYQAYMSNLESHSAILDQKLNLNNEEIARVEL</div> <div>ECETIKQENT</div> <div>RLQNIIDNQKYSVADIERINHERNELQQTINKLTKDLEAEQQ</div> <div>KLWNEELK</div> <div>YARGKEAIETQLAEYHKLARKLKLIPKAENSKGYDFEIKFN</div> <div>PEAGANCL</div> <div>VKYRAQVYVPLKELLNETEEEINKALNKKMGLEDTLEQLN</div> <div>AMITESKRSV</div> <div>RTLKEEVQKLDDLYQQKIKEAEEDEKCASELESLEKHKH</div> <div>LLESTVNQGL</div> <div>SEAMNELDAVQREYQLVVQTTTEERRKVGNNLQRLLEMV</div> <div>ATHVGSVEKHL</div> <div>EEQIAKVDREYEECMSEDLSENKEIRDKYEKKATLIKSS</div> <div>E</div>
Predicted molecular weight	100 kDa including tags

## Specifications

---

Our **Abpromise guarantee** covers the use of **ab131907** in the following tested applications.

The application notes include recommended starting dilutions; optimal dilutions/concentrations should be determined by the end user.

<b>Applications</b>	Western blot
	SDS-PAGE
	ELISA
<b>Form</b>	Liquid
<b>Additional notes</b>	This product was previously labelled as HEC1.

## Preparation and Storage

---

<b>Stability and Storage</b>	Shipped on dry ice. Upon delivery aliquot and store at -80°C. Avoid freeze / thaw cycles.
	pH: 8.00
	Constituents: 0.31% Glutathione, 0.79% Tris HCl

## General Info

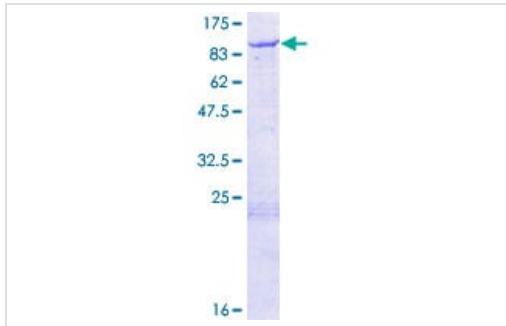
---

<b>Function</b>	Acts as a component of the essential kinetochore-associated NDC80 complex, which is required for chromosome segregation and spindle checkpoint activity. Required for kinetochore integrity and the organization of stable microtubule binding sites in the outer plate of the kinetochore.
<b>Sequence similarities</b>	Belongs to the NDC80/HEC1 family.
<b>Developmental stage</b>	Expression peaks in mitosis.
<b>Post-translational modifications</b>	Phosphorylation begins in S phase of the cell cycle and peaks in mitosis. Phosphorylated by NEK2. May also be phosphorylated by AURKA and AURKB.
<b>Cellular localization</b>	Nucleus. Chromosome > centromere > kinetochore. Localizes to kinetochores from late prophase to anaphase. Localizes specifically to the outer plate of the kinetochore.

---

## Images

---



SDS-PAGE - Recombinant Human HEC1/HEC  
protein (ab131907)

12.5% SDS-PAGE analysis of ab131907 stained with Coomassie Blue.

**Please note:** All products are "FOR RESEARCH USE ONLY. NOT FOR USE IN DIAGNOSTIC PROCEDURES"

### Our Abpromise to you: Quality guaranteed and expert technical support

---

- Replacement or refund for products not performing as stated on the datasheet
- Valid for 12 months from date of delivery
- Response to your inquiry within 24 hours
- We provide support in Chinese, English, French, German, Japanese and Spanish
- Extensive multi-media technical resources to help you
- We investigate all quality concerns to ensure our products perform to the highest standards

If the product does not perform as described on this datasheet, we will offer a refund or replacement. For full details of the Abpromise, please visit <https://www.abcam.com/abpromise> or contact our technical team.

### Terms and conditions

---

- Guarantee only valid for products bought direct from Abcam or one of our authorized distributors