

## Product datasheet

# Recombinant Human Hes1 protein ab114192

[1 Image](#)

### Description

---

<b>Product name</b>	Recombinant Human Hes1 protein
<b>Expression system</b>	Wheat germ
<b>Accession</b>	<u><a href="#">Q14469</a></u>
<b>Protein length</b>	Protein fragment
<b>Animal free</b>	No
<b>Nature</b>	Recombinant
<b>Species</b>	Human
<b>Sequence</b>	KSSKPIMEKRRRRARINESLSQLKTLILDALKKDSSRHSKLE KADILEMTV KHLRNLQRAQMTAALSTDPSVLGKYRAGFSECMNEVTRF LSTCEGVNTEV RTRLLGH
<b>Predicted molecular weight</b>	37 kDa including tags
<b>Amino acids</b>	36 to 142

### Specifications

---

Our **Abpromise guarantee** covers the use of **ab114192** in the following tested applications.

The application notes include recommended starting dilutions; optimal dilutions/concentrations should be determined by the end user.

<b>Applications</b>	SDS-PAGE Western blot ELISA
<b>Form</b>	Liquid

### Preparation and Storage

---

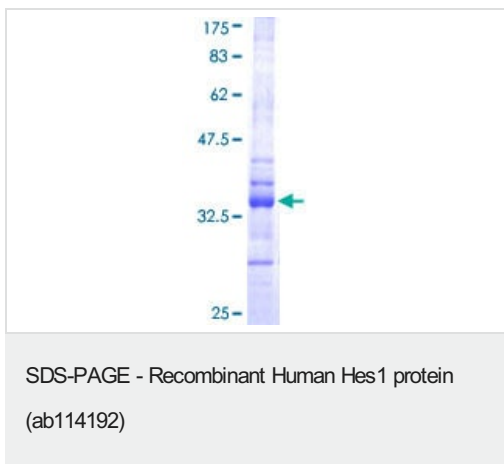
<b>Stability and Storage</b>	Shipped on dry ice. Upon delivery aliquot and store at -80°C. Avoid freeze / thaw cycles. pH: 8.00 Constituents: 0.79% Tris HCl, 0.3% Glutathione
------------------------------	---

### General Info

---

<b>Function</b>	Transcriptional repressor of genes that require a bHLH protein for their transcription. May act as a negative regulator of myogenesis by inhibiting the functions of MYOD1 and ASH1. Binds DNA on N-box motifs: 5'-CACNAG-3' with high affinity and on E-box motifs: 5'-CANNTG-3' with low affinity.
<b>Sequence similarities</b>	Contains 1 basic helix-loop-helix (bHLH) domain. Contains 1 Orange domain.
<b>Domain</b>	Has a particular type of basic domain (presence of a helix-interrupting proline) that binds to the N-box (CACNAG), rather than the canonical E-box (CANNTG). The C-terminal WRPW motif is a transcriptional repression domain necessary for the interaction with Groucho/TLE family members, transcriptional corepressors recruited to specific target DNA by Hairy-related proteins. The bHLH, as well as cooperation between the central Orange domain and the C-terminal WRPW motif, is required for transcriptional repressor activity.
<b>Cellular localization</b>	Nucleus.

## Images



ab114192 analysed on a 12.5% SDS-PAGE gel stained with Coomassie Blue.

**Please note:** All products are "FOR RESEARCH USE ONLY. NOT FOR USE IN DIAGNOSTIC PROCEDURES"

## Our Abpromise to you: Quality guaranteed and expert technical support

- Replacement or refund for products not performing as stated on the datasheet
- Valid for 12 months from date of delivery
- Response to your inquiry within 24 hours
- We provide support in Chinese, English, French, German, Japanese and Spanish
- Extensive multi-media technical resources to help you
- We investigate all quality concerns to ensure our products perform to the highest standards

If the product does not perform as described on this datasheet, we will offer a refund or replacement. For full details of the Abpromise, please visit <https://www.abcam.com/abpromise> or contact our technical team.

## Terms and conditions

- Guarantee only valid for products bought direct from Abcam or one of our authorized distributors