

Product datasheet

Recombinant Human HIRIP3 protein ab132409

[1 Image](#)

Description

Product name	Recombinant Human HIRIP3 protein
Expression system	Wheat germ
Accession	<u>Q9BW71</u>
Protein length	Full length protein
Animal free	No
Nature	Recombinant
Species	Human

Sequence

```
MAREKEMQEFTRSFFRGRPDLSTLTHSMRRRYLAHSGRS
HLEPEEKQAL
KRLVEEELLKMQVDEAASREDKLDLTKKGKRPTPCSDP
ERKRFRFNSES
ESGSEASSPDYFGPPAKNGVAAEVSPAKEENPRRASKA
VEESSDEERQRD
LPAQRGEESSEEEKGYKGTTRKKPVVKKQAPGKASVS
RKQAREESESE
AEPVQRTAKKVEGNKGTKSLKESEQESEEEILAQKKEQR
EEEEEEEEKEE
DEEKGDWKPRTRSNGRRKSAREERSCKQKSQAKRLLGD
SDSEEEQKEAAS
SGDDSGRDREPPVQRKSEDRTQLKGGKRLSGSSEDEED
SGKGEP TAKGSR
KMARLGSTSGEESDLEREVSDSEAGGGPQGERKNRSSK
KSSRKGRTRSSS
SSSDGSPEAKGGKAGSGRRGEDHPAVMRLKRYIRACGA
HRNYKLLGSCC
SHKERLSILRAELEALGMKGTPSLGKCRALKEQREEAAEV
ASLDVANIIS
GSGRPRRRRTAWNPLGEAAPPGELYRRTLDSDEERPRPA
PPDWSHMRGIIS SDGESN
```

Predicted molecular weight	88 kDa including tags
Amino acids	1 to 556

Specifications

Our **Abpromise guarantee** covers the use of **ab132409** in the following tested applications.

The application notes include recommended starting dilutions; optimal dilutions/concentrations should be determined by the end user.

Applications	SDS-PAGE Western blot ELISA
Form	Liquid

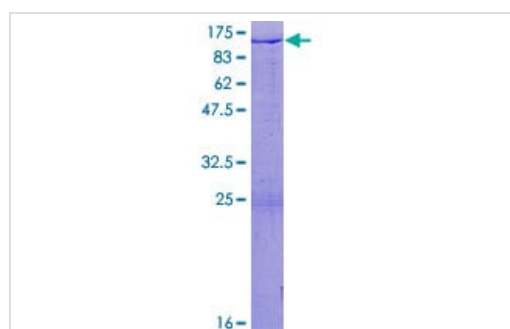
Preparation and Storage

Stability and Storage	Shipped on dry ice. Upon delivery aliquot and store at -80°C. Avoid freeze / thaw cycles. pH: 8.00 Constituents: 0.31% Glutathione, 0.79% Tris HCl
------------------------------	--

General Info

Function	May play a role in chromatin function and histone metabolism via its interaction with HIRA and histones.
Tissue specificity	Widely expressed. Isoform 1 is predominant in skeletal muscle. Isoform 2 is predominant in liver and heart.
Post-translational modifications	Phosphorylated by CK2.
Cellular localization	Nucleus. Nuclear throughout the cell cycle and is excluded from condensed chromatin during mitosis.

Images



12.5% SDS-PAGE analysis of ab132409, stained with Coomassie Blue.

SDS-PAGE - Recombinant Human HIRIP3 protein (ab132409)

Please note: All products are "FOR RESEARCH USE ONLY. NOT FOR USE IN DIAGNOSTIC PROCEDURES"

Our Abpromise to you: Quality guaranteed and expert technical support

- Replacement or refund for products not performing as stated on the datasheet

- Valid for 12 months from date of delivery
- Response to your inquiry within 24 hours
- We provide support in Chinese, English, French, German, Japanese and Spanish
- Extensive multi-media technical resources to help you
- We investigate all quality concerns to ensure our products perform to the highest standards

If the product does not perform as described on this datasheet, we will offer a refund or replacement. For full details of the Abpromise, please visit <https://www.abcam.com/abpromise> or contact our technical team.

Terms and conditions

- Guarantee only valid for products bought direct from Abcam or one of our authorized distributors