

Product datasheet

Recombinant Human HLA G protein (His tag) ab225660

3 Images

Description

Product name	Recombinant Human HLA G protein (His tag)
Purity	> 90 % SDS-PAGE.
Expression system	Mammalian
Accession	<u>P17693</u>
Protein length	Full length protein
Animal free	No
Nature	Recombinant
Species	Human
Sequence	<p>DAAQPARRAVRSLHHHHHHHHHHHLVPRGSRTGSHSMRY FSAAVSRPGRGE PRFIAMGYVDDTQFVRFDSDSACPRMEPRAPWVEQEGP EYWEEETRNTKA HAQTDRMNLQTLRGYYNQSEASSHTLQWMIGCDLGSDGR LLRGYEQYAYD GKDYALNEDLRSWTAADTAAQISKRKCEANVAEQRRR YLEGTCEVWLH RYLENGKEMLQRADPPKTHVTHHPVFDYEATLRCWALGF YPAEILTWQR DGEDQTQDVELVETRPAGDGTQKWAAVVPSGEEQRY TCHVQHEGLPEP LMLRWKQSSLPTIPMGVAGLVVLAAVVTGAAVA AVLWR KKSSD</p>
Predicted molecular weight	40 kDa including tags
Amino acids	25 to 338
Tags	His tag N-Terminus
Additional sequence information	This product is the mature full length protein with a 6xHis tag. The signal peptide is not included. Fragment of the pSecTag 2A vector: DAAQPARRAVRSL Thrombin site: LVPRGS Linker: RT

Specifications

Our **Abpromise guarantee** covers the use of **ab225660** in the following tested applications.

The application notes include recommended starting dilutions; optimal dilutions/concentrations should be determined by the end user.

Applications	SDS-PAGE Mass Spectrometry
Mass spectrometry	LC-MS/MS
Form	Liquid

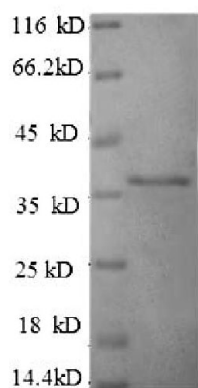
Preparation and Storage

Stability and Storage	Shipped at 4°C. Upon delivery aliquot. Store at -20°C or -80°C. Avoid freeze / thaw cycle. pH: 7.20 Constituents: 50% Glycerol (glycerin, glycerine), Tris buffer
------------------------------	---

General Info

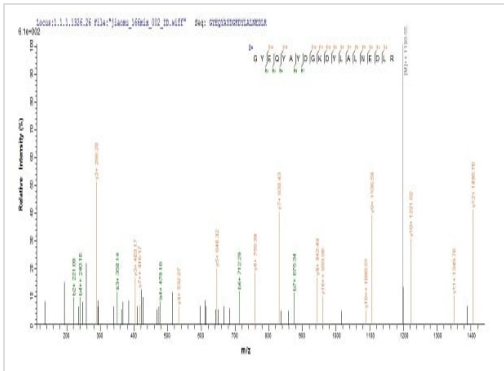
Function	Involved in the presentation of foreign antigens to the immune system. Plays a role in maternal tolerance of the fetus by mediating protection from the deleterious effects of natural killer cells, cytotoxic T lymphocytes, macrophages and mononuclear cells.
Tissue specificity	Expressed in trophoblasts.
Sequence similarities	Belongs to the MHC class I family. Contains 1 Ig-like C1-type (immunoglobulin-like) domain.
Cellular localization	Membrane.

Images



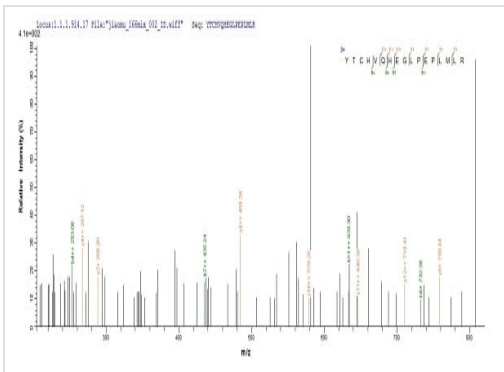
(Tris-Glycine gel) Discontinuous SDS-PAGE (reduced) analysis of ab225660 with 5% enrichment gel and 15% separation gel.

SDS-PAGE - Recombinant Human HLA G protein
(His tag) (ab225660)



Mass Spectrometry - Recombinant Human HLA G protein (His tag) (ab225660)

Based on the SEQUEST from database of Mammalian Cell host and target protein, the LC-MS/MS Analysis result of ab225660 could indicate that this peptide derived from Mammalian Cell-expressed human HLA-G.



Mass Spectrometry - Recombinant Human HLA G protein (His tag) (ab225660)

Based on the SEQUEST from database of Mammalian Cell host and target protein, the LC-MS/MS Analysis result of ab225660 could indicate that this peptide derived from Mammalian Cell-expressed human HLA-G.

Please note: All products are "FOR RESEARCH USE ONLY. NOT FOR USE IN DIAGNOSTIC PROCEDURES"

Our Abpromise to you: Quality guaranteed and expert technical support

- Replacement or refund for products not performing as stated on the datasheet
- Valid for 12 months from date of delivery
- Response to your inquiry within 24 hours
- We provide support in Chinese, English, French, German, Japanese and Spanish
- Extensive multi-media technical resources to help you
- We investigate all quality concerns to ensure our products perform to the highest standards

If the product does not perform as described on this datasheet, we will offer a refund or replacement. For full details of the Abpromise, please visit <https://www.abcam.com/abpromise> or contact our technical team.

Terms and conditions

-
- Guarantee only valid for products bought direct from Abcam or one of our authorized distributors