

## Product datasheet

# Recombinant Human HP1 gamma/CBX3 protein ab124548

[1 Image](#)

### Description

<b>Product name</b>	Recombinant Human HP1 gamma/CBX3 protein
<b>Purity</b>	> 90 % SDS-PAGE. Purified by using conventional chromatography.
<b>Expression system</b>	Escherichia coli
<b>Accession</b>	<u><b>Q13185</b></u>
<b>Protein length</b>	Full length protein
<b>Animal free</b>	No
<b>Nature</b>	Recombinant
<b>Species</b>	Human
<b>Sequence</b>	MGSSHHHHHH SSGLVPRGSH MGSHTMASNKT TLQKMGKKQN GKSKKVEEAE PEEFVVEKVL DRRVVNGKVE YFLKWKGFTD ADNTWEPEEN LDCPELIEAF LNSQKAGKEK DGTKRKSLSD SESDDSKSKK KRDAADKPRG FARGLDPERI IGATDSSGEL MFLMKWKDSD EADLVLAKEA NMKCPQVIA FYEERLTWHS CPEDEAQ
<b>Predicted molecular weight</b>	23 kDa including tags
<b>Amino acids</b>	1 to 183
<b>Tags</b>	His tag N-Terminus

### Specifications

Our **Abpromise guarantee** covers the use of **ab124548** in the following tested applications.

The application notes include recommended starting dilutions; optimal dilutions/concentrations should be determined by the end user.

<b>Applications</b>	SDS-PAGE Mass Spectrometry
<b>Mass spectrometry</b>	MALDI-TOF
<b>Form</b>	Liquid
<b>Additional notes</b>	This product was previously labelled as HP1 gamma

## Preparation and Storage

### Stability and Storage

Shipped at 4°C. Store at +4°C short term (1-2 weeks). Upon delivery aliquot. Store at -20°C or -80°C. Avoid freeze / thaw cycle.

pH: 8.00

Constituents: 0.02% DTT, 0.32% Tris HCl, 20% Glycerol (glycerin, glycerine), 0.58% Sodium chloride

## General Info

### Function

Seems to be involved in transcriptional silencing in heterochromatin-like complexes. Recognizes and binds histone H3 tails methylated at 'Lys-9', leading to epigenetic repression. May contribute to the association of the heterochromatin with the inner nuclear membrane through its interaction with lamin B receptor (LBR). Involved in the formation of functional kinetochore through interaction with MIS12 complex proteins.

### Sequence similarities

Contains 2 chromo domains.

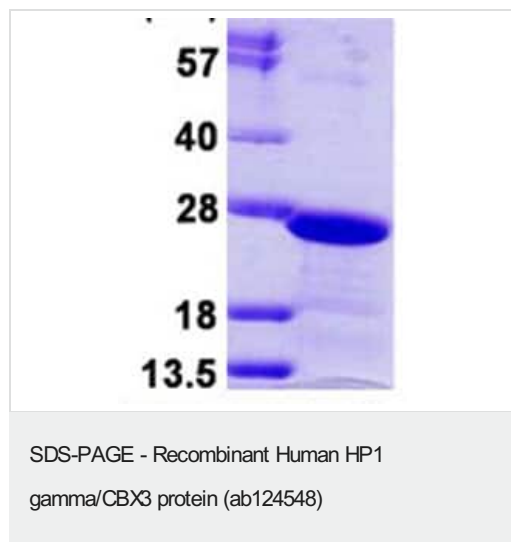
### Post-translational modifications

Phosphorylated by PIM1. Phosphorylated during interphase and possibly hyper-phosphorylated during mitosis.

### Cellular localization

Nucleus. Associates with euchromatin and is largely excluded from constitutive heterochromatin. May be associated with microtubules and mitotic poles during mitosis.

## Images



15% SDS-PAGE (3 µg loaded)

**Please note:** All products are "FOR RESEARCH USE ONLY. NOT FOR USE IN DIAGNOSTIC PROCEDURES"

## Our Abpromise to you: Quality guaranteed and expert technical support

- Replacement or refund for products not performing as stated on the datasheet

- Valid for 12 months from date of delivery
- Response to your inquiry within 24 hours
- We provide support in Chinese, English, French, German, Japanese and Spanish
- Extensive multi-media technical resources to help you
- We investigate all quality concerns to ensure our products perform to the highest standards

If the product does not perform as described on this datasheet, we will offer a refund or replacement. For full details of the Abpromise, please visit <https://www.abcam.com/abpromise> or contact our technical team.

#### **Terms and conditions**

---

- Guarantee only valid for products bought direct from Abcam or one of our authorized distributors