

# Recombinant Human IFI16 protein ab158724

[1 References](#)   [1 Image](#)

Description

Product name	Recombinant Human IFI16 protein
Expression system	Wheat germ
Protein length	Full length protein
Animal free	No
Nature	Recombinant
Species	Human

Sequence	MGKKYKNVLLKGLEVINDYHFRMVKSLLSNDLKLNLKMRE EYDKIQIAD LMEEKFRGDAGLGKLIKIFEDIPTLEDLAETLKKEKLKVKG PALSRKRKK EVDATSPAPSTSSTVKTEGAEATPGAQKRKKSTKEKAGP KGSKVSEEQTQ PPSPAGAGMSTAMGRSPSPKTSLSAPPNTSSTENPKTV KCQVTPRRNVL QKRPVVKVLSTTKPFYEYTPEMEKKIMFHATVATQTQFFH VKVLNTSLK EKFNGKKIIISDYLEYDSLLEVNEESTVSEAGPNQTFEVPN KIINRAKE TLKIDILHKQASGNIVYGVFMLHKKTVNQKTTIYEQDDR GKMDVVGTGQ CHNIPCEEQDKLQLFCFRLRKKNQMSKLISEMHSFIQIKK KTNPRNNDPK SMKLPQEQSQLPNPSEASTTFPESHLRTPQMPPTTPSSS FFTKKSEDTIS KMNDFMRMQILKEGSHFPGPFMTSIGPAESHPTPQMPP STPSSSFLTTL KPRLKTEPEEVSIEDSAQSDLKEVMVLNATESFVYEPKEQ KKMFHATVAT ENEVFRVKVFNDLKEKFTPKIIAIANYVCRNGFLEVYPFTL VADVADNAD RNMEIPKGLIRSASVTPKINQLCSQTKGSFVNGVFEVHKKN VRGEFTYYE IQDNTGKMEVVVHGRLTTINCEEQDKLKLTCFELAPKSGN TGELRSVIHS HIKVIKTRKNKKDILNPDSSMETSPDFFF
----------	--

<b>Amino acids</b>	1 to 729
<b>Tags</b>	GST tag N-Terminus

## Specifications

---

Our **Abpromise guarantee** covers the use of **ab158724** in the following tested applications.

The application notes include recommended starting dilutions; optimal dilutions/concentrations should be determined by the end user.

<b>Applications</b>	Western blot ELISA
<b>Form</b>	Liquid
<b>Additional notes</b>	

## Preparation and Storage

---

<b>Stability and Storage</b>	Shipped on dry ice. Upon delivery aliquot and store at -80°C. Avoid freeze / thaw cycles. pH: 8.00 Constituents: 0.31% Glutathione, 0.79% Tris HCl
------------------------------	--

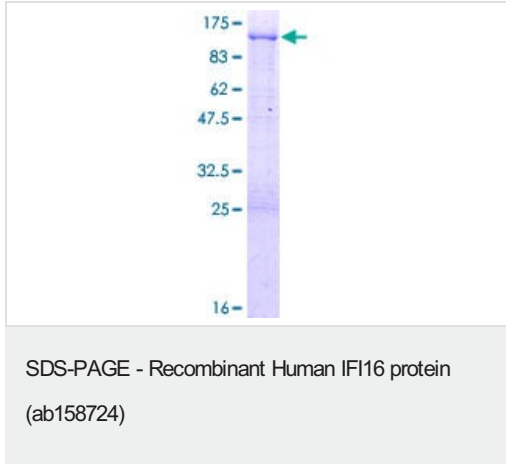
## General Info

---

<b>Relevance</b>	Interferon (IFN) Inducible 16 (IFI16) protein belongs to a family of HIN 200 human and mouse proteins. IFI16 is a nuclear protein containing regulatory domains such as DNA binding domain, transcriptional regulatory domain and DAPIN/PAAD domain. IFI16 has three isotypes A, B, and C (85-95 kDa), which arise as a result of mRNA alternative splicing. All are phosphorylated on serine and threonine residues and can homo and heterodimerize. Expression is restricted to the nuclei of hematopoietic cells, fibroblasts and epithelial cells. IFI16 expression in hematopoietic cells of myeloid lineage is tightly regulated and highly induced in the differentiation and proliferation of the cell. Due to its localization in the nucleus, regulation of protein expression, and ability to bind DNA, it is assumed that IFI16 has a role in transcription regulation of cell differentiation. In addition, it was found that IFI16 can act as a transcriptional repressor and is involved in regulation and activation of p53 in cancer cells.
<b>Cellular localization</b>	Nucleus. Cytoplasm. Note: Cellular distribution is dependent on the acetylation status of the multipartite nuclear localization signal (NLS); NLS acetylation promotes cytoplasmic localization.

## Images

---



ab158724 on a 12.5% SDS-PAGE stained with Coomassie Blue.

**Please note:** All products are "FOR RESEARCH USE ONLY. NOT FOR USE IN DIAGNOSTIC PROCEDURES"

#### Our Abpromise to you: Quality guaranteed and expert technical support

---

- Replacement or refund for products not performing as stated on the datasheet
- Valid for 12 months from date of delivery
- Response to your inquiry within 24 hours
- We provide support in Chinese, English, French, German, Japanese and Spanish
- Extensive multi-media technical resources to help you
- We investigate all quality concerns to ensure our products perform to the highest standards

If the product does not perform as described on this datasheet, we will offer a refund or replacement. For full details of the Abpromise, please visit <https://www.abcam.com/abpromise> or contact our technical team.

#### Terms and conditions

---

- Guarantee only valid for products bought direct from Abcam or one of our authorized distributors