

# Recombinant human IgG2 protein ab182668

[2 Images](#)

### Description

<b>Product name</b>	Recombinant human IgG2 protein
<b>Biological activity</b>	Human FCGRT & B2M Heterodimer Protein, His Tag (SPR & BLI verified) captured on CM5 Chip via anti-His antibody can bind ab182668 with an affinity constant of 33.3 nM as determined in SPR assay (Biacore 8K).
<b>Purity</b>	> 95 % SDS-PAGE.
<b>Endotoxin level</b>	< 1.000 Eu/μg
<b>Expression system</b>	HEK 293 cells
<b>Accession</b>	<b><u>P01859</u></b>
<b>Protein length</b>	Protein fragment
<b>Animal free</b>	No
<b>Nature</b>	Recombinant
<b>Species</b>	Human
<b>Sequence</b>	ERKCCVECPPCPAPPVAGPSVFLFPPKPKDTLMISRTPE VTCVVVDVSHE DPEVQFNWYVDGVEVHNAKTKPREEQFNSTFRVSVLTV VHQDWLNGKEY KCKVSNKGLPAPIEKTISKTKGQPREPQVYTLPPSREEMT KNQVSLTCLV KGFYPDSISVEWESNGQPENNYKTPMLDSDGSFFLYS KLTVDKSRWQQ GNVFSCSVMEALHNHYTQKSLSLSPGK
<b>Predicted molecular weight</b>	26 kDa
<b>Amino acids</b>	99 to 326

### Specifications

Our **Abpromise guarantee** covers the use of **ab182668** in the following tested applications.

The application notes include recommended starting dilutions; optimal dilutions/concentrations should be determined by the end user.

<b>Applications</b>	SDS-PAGE
	Surface Plasmon Resonance

<b>Form</b>	Lyophilized
<b>Additional notes</b>	<p>This product is stable after storage at:</p> <p>-20°C to -70°C for 12 months in lyophilized state;</p> <p>-70°C for 3 months under sterile conditions after reconstitution.</p>

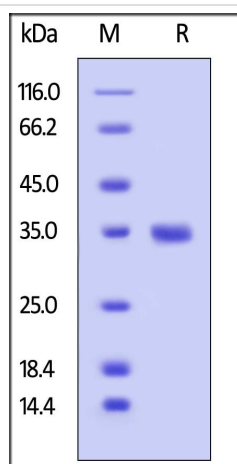
## Preparation and Storage

<b>Stability and Storage</b>	<p>Shipped at 4°C. Upon delivery aliquot. Store at -20°C or -80°C. Avoid freeze / thaw cycle. Please see notes section.</p> <p>pH: 7.30</p> <p>Constituents: PBS, 12% D-(+)-Trehalose dihydrate</p> <p>Lyophilized from 0.22 µm filtered solution.</p> <p>This product is an active protein and may elicit a biological response in vivo, handle with caution.</p>
<b>Reconstitution</b>	Reconstitute with sterile deionized water to a concentration of 400 µg/ml.

## General Info

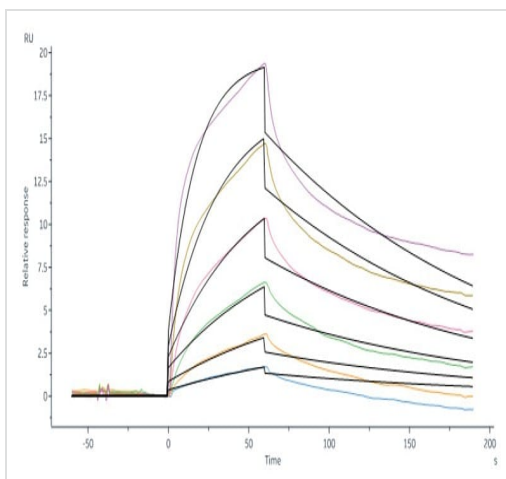
<b>Relevance</b>	There are four IgG subclasses (IgG1, 2, 3 and 4) in humans, named in order of their abundance in serum (IgG1 being the most abundant). IgG2 is the only IgG subclass which passes through the placenta at a level generally lower than that found in the mother. A deficiency of IgG2 indicates a poor antibody response to bacterial polysaccharides and can lead to increased susceptibility to infections caused by encapsulated bacteria.
<b>Cellular localization</b>	Secreted

## Images



Human IgG Fc (Tag Free) on SDS-PAGE under reducing (R) condition. The gel was stained overnight with Coomassie Blue. The protein migrates as 33-35 kDa due to glycosylation.

SDS-PAGE - Recombinant human IgG2 protein  
(ab182668)



Human FCGRT & B2M Heterodimer Protein, His Tag (SPR & BLI verified) captured on CM5 Chip via anti-His antibody can bind ab182668 with an affinity constant of 33.3 nM as determined in SPR assay (Biacore 8K).

Surface Plasmon Resonance - Recombinant human IgG2 protein (ab182668)

**Please note:** All products are "FOR RESEARCH USE ONLY. NOT FOR USE IN DIAGNOSTIC PROCEDURES"

### Our Abpromise to you: Quality guaranteed and expert technical support

- Replacement or refund for products not performing as stated on the datasheet
- Valid for 12 months from date of delivery
- Response to your inquiry within 24 hours
- We provide support in Chinese, English, French, German, Japanese and Spanish
- Extensive multi-media technical resources to help you
- We investigate all quality concerns to ensure our products perform to the highest standards

If the product does not perform as described on this datasheet, we will offer a refund or replacement. For full details of the Abpromise, please visit <https://www.abcam.com/abpromise> or contact our technical team.

### Terms and conditions

- Guarantee only valid for products bought direct from Abcam or one of our authorized distributors