

Product datasheet

Recombinant Human IL-12A protein (Fc Chimera) ab221208

1 Image

Description

| | | | |
|--|--|--|--|
| Product name | Recombinant Human IL-12A protein (Fc Chimera) | | |
| Purity | > 90 % SDS-PAGE. | | |
| Endotoxin level | < 1.000 Eu/μg | | |
| Expression system | HEK 293 cells | | |
| Accession | <u>P29459</u> | | |
| Protein length | Full length protein | | |
| Animal free | No | | |
| Nature | Recombinant | | |
| Species | Human | | |
| Sequence | RNLPVATPDPGMFPC LHHSQNLLRAVS NMLQKARQTLEF YPCTSEEIDHE DITKDKTSTVEACLPLELTKNESCLNSRETSFITNGSCLAS RKTSFMMAL CLSSYEDLKMYQVEFKTMNAKLLMDPKRQIFLDQNMLAVI DELMQALNF NSETVPQKSSLEEPDFYKTKIKLCILLHAFRIRAVTIDRVMS YLNAS | | |
| Predicted molecular weight | 49 kDa including tags | | |
| Amino acids | 23 to 219 | | |
| Tags | Fc tag C-Terminus | | |
| Additional sequence information | Fused with a human IgG1 Fc tag (Pro 100 - Lys 330; P01857) at the C-terminus. This product is the mature full length protein from aa 23 to 219. The signal peptide is not included. | | |

Specifications

Our **Abpromise guarantee** covers the use of **ab221208** in the following tested applications.

The application notes include recommended starting dilutions; optimal dilutions/concentrations should be determined by the end user.

Applications SDS-PAGE

Form Lyophilized

Additional notes

This product is stable after storage at:

-20 °C to -70 °C for 12 months in lyophilized state;

-70 °C for 3 months under sterile conditions after reconstitution.

Preparation and Storage

Stability and Storage

Shipped at 4 °C. Upon delivery aliquot. Store at -20 °C or -80 °C. Avoid freeze / thaw cycle.

pH: 7.4

Constituents: Tris, Glycine, 5% Trehalose, Sodium chloride, L-Arginine

Lyophilized from 0.22 µm filtered solution.

Reconstitution

Reconstitute with sterile deionized water to a concentration of 1 mg/ml.

General Info

Function

Cytokine that can act as a growth factor for activated T and NK cells, enhance the lytic activity of NK/lymphokine-activated Killer cells, and stimulate the production of IFN-gamma by resting PBMC.

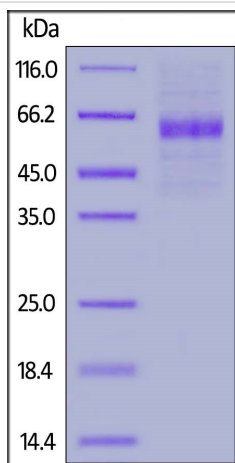
Sequence similarities

Belongs to the IL-6 superfamily.

Cellular localization

Secreted.

Images



SDS-PAGE of reduced ab221208 stained overnight with Coomassie Blue. The protein migrates as 57 - 66 kDa in SDS-PAGE due to glycosylation.

SDS-PAGE - Recombinant Human IL-12A protein
(Fc Chimera) (ab221208)

Please note: All products are "FOR RESEARCH USE ONLY. NOT FOR USE IN DIAGNOSTIC PROCEDURES"

Our Abpromise to you: Quality guaranteed and expert technical support

- Replacement or refund for products not performing as stated on the datasheet
- Valid for 12 months from date of delivery
- Response to your inquiry within 24 hours
- We provide support in Chinese, English, French, German, Japanese and Spanish
- Extensive multi-media technical resources to help you
- We investigate all quality concerns to ensure our products perform to the highest standards

If the product does not perform as described on this datasheet, we will offer a refund or replacement. For full details of the Abpromise, please visit <https://www.abcam.com/abpromise> or contact our technical team.

Terms and conditions

- Guarantee only valid for products bought direct from Abcam or one of our authorized distributors