

Product datasheet

Recombinant human IL-13 receptor alpha 1 protein
ab167745

2 Images

Description

Product name	Recombinant human IL-13 receptor alpha 1 protein	
Biological activity	Measured by its binding ability in a functional ELISA. Immobilized rhIL13 receptor alpha 1 at 2 µg/mL (100 µL/well) can bind rhIL13 with a linear range of 0.1-10 ng/mL.	
Purity	> 98 % SDS-PAGE. ab167745 was lyophilized from 0.22 µm filtered solution.	
Endotoxin level	< 1.000 Eu/µg	
Expression system	HEK 293 cells	
Accession	<u>P78552</u>	
Protein length	Protein fragment	
Animal free	No	
Nature	Recombinant	
Species	Human	
Sequence	GGGGAAPTETQPPVTNLSVSVENLCTVMTWNPPEGASS NCSLWYFSHFG DKQDKKIAPETRRSIEVPLNERICLQVGSQCSTNESEKPSI LVEKCISPP EGDPESAVTELQCWVHNLSYMKCSWLPGRNTSPDTNYTL YYWHRSLKIH QCENIFREGQYFGCSFDLTKVKDSSFEQHSVQIMVKDNA GKIKPSFNVP LTSRVKPDPPHIKNLSFHNDLYVQWENPQNFI SRCLFYE VEVNNSQTET HNVFYVQEAKCENPEFERNVENTSCFMVPGVLPDTLNTV RIRVKTNKL CY EDDKLWSNWSQEMSIGKKRNST	
Predicted molecular weight	38 kDa including tags	
Amino acids	22 to 343	
Tags	His tag C-Terminus	

Specifications

Our **Abpromise guarantee** covers the use of **ab167745** in the following tested applications.

The application notes include recommended starting dilutions; optimal dilutions/concentrations should be determined by the end user.

Applications	Functional Studies
	SDS-PAGE
Form	Lyophilized
Additional notes	Measured by its binding ability in a functional ELISA. Immobilized rhIL-13 receptor alpha 1 at 2 µg/mL (100 µL/well) can bind rhIL-13 with a linear range of 0.1-10 ng/mL.
	Please contact our Scientific Support team for lot-specific reconstitution instructions.

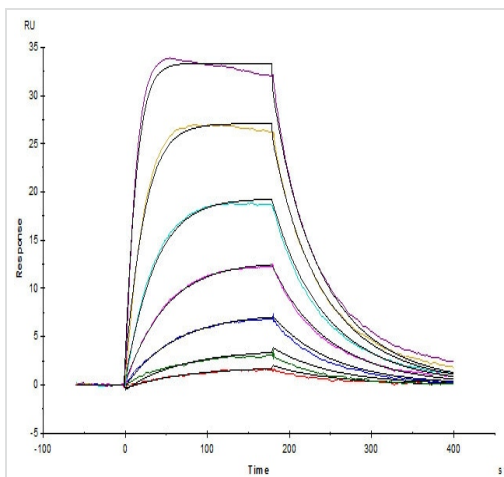
Preparation and Storage

Stability and Storage	Shipped at 4°C. Store at +4°C short term (1-2 weeks). Upon delivery aliquot. Store at -20°C or -80°C. Avoid freeze / thaw cycle.
	pH: 7.40
	Constituents: 94% PBS, 5% Trehalose
	This product is an active protein and may elicit a biological response in vivo, handle with caution.

General Info

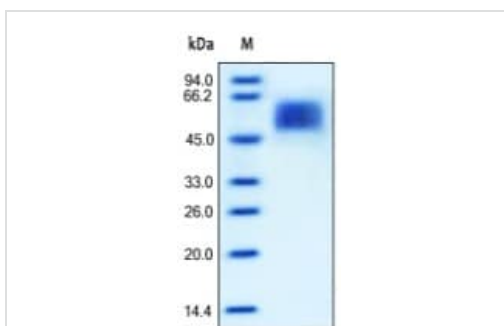
Function	Binds with low affinity to interleukin-13 (IL13). Together with IL4RA can form a functional receptor for IL13. Also serves as an alternate accessory protein to the common cytokine receptor gamma chain for interleukin-4 (IL4) signaling, but cannot replace the function of IL2RG in allowing enhanced interleukin-2 (IL2) binding activity.
Tissue specificity	Ubiquitous. Highest levels in heart, liver, skeletal muscle and ovary; lowest levels in brain, lung and kidney. Also found in B-cells, T-cells and endothelial cells.
Sequence similarities	Belongs to the type I cytokine receptor family. Type 5 subfamily.
Domain	The WSXWS motif appears to be necessary for proper protein folding and thereby efficient intracellular transport and cell-surface receptor binding.
	The box 1 motif is required for JAK interaction and/or activation.
Cellular localization	Membrane.

Images



Human IL-13 R alpha 1, His Tag (SPR verified) captured on CM5 chip via anti-His antibody can bind Human IL-13 with an affinity constant of 16 nM as determined in a SPR assay (Biacore T200).

Functional Studies - Recombinant human IL-13 receptor alpha 1 protein (ab167745)



SDS-PAGE analysis of reduced ab167745 and staining overnight with Coomassie Blue. DTT-reduced protein migrates as 55-65 kDa in SDS-PAGE due to glycosylation.

SDS-PAGE - Recombinant human IL-13 receptor alpha 1 protein (ab167745)

Please note: All products are "FOR RESEARCH USE ONLY. NOT FOR USE IN DIAGNOSTIC PROCEDURES"

Our Abpromise to you: Quality guaranteed and expert technical support

- Replacement or refund for products not performing as stated on the datasheet
- Valid for 12 months from date of delivery
- Response to your inquiry within 24 hours
- We provide support in Chinese, English, French, German, Japanese and Spanish
- Extensive multi-media technical resources to help you
- We investigate all quality concerns to ensure our products perform to the highest standards

If the product does not perform as described on this datasheet, we will offer a refund or replacement. For full details of the Abpromise, please visit <https://www.abcam.com/abpromise> or contact our technical team.

Terms and conditions

- Guarantee only valid for products bought direct from Abcam or one of our authorized distributors